

LOC I-OSH <b>110.5</b>	APP CRS <b>184°</b>	Rwy Idg TDZE Apt Elev	<b>8002</b> <b>794</b> <b>808</b>
---------------------------	------------------------	-----------------------------	---

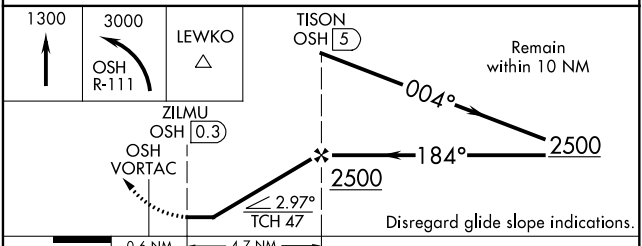
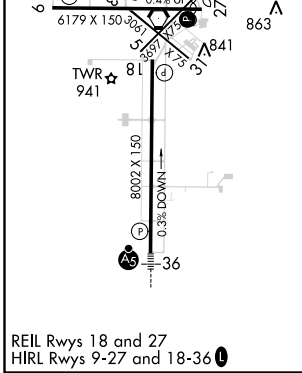
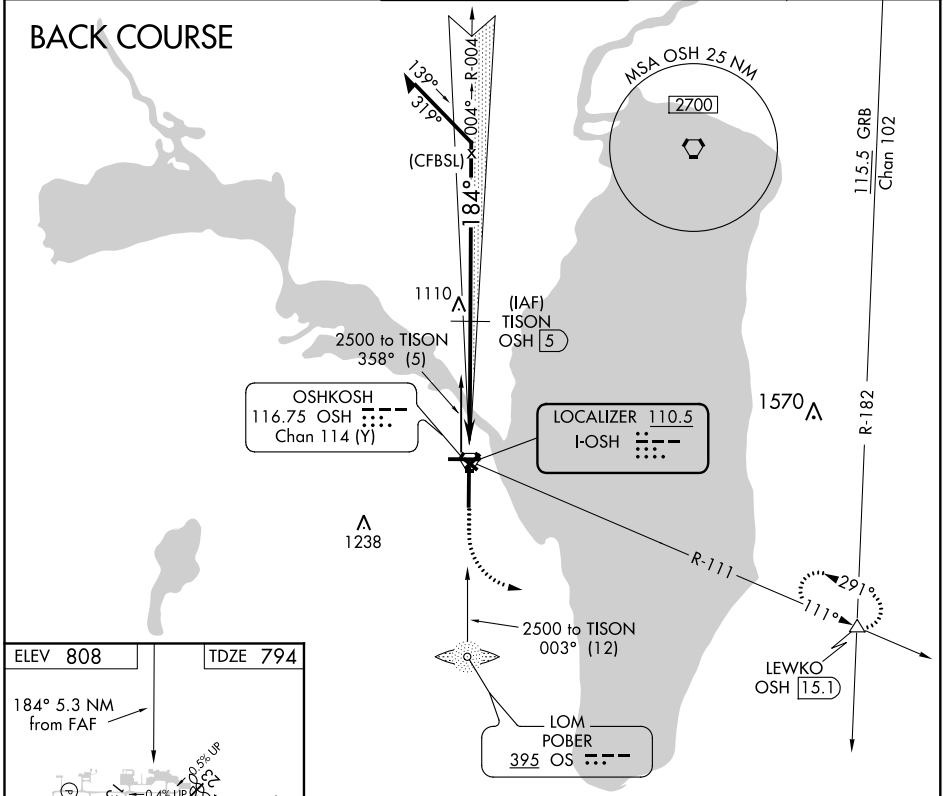
# LOC/DME BC RWY 18

WITTMAN RGNL (OSH)

**⚠** Simultaneous reception of I-OSH and OSH DME required. DME from OSH VORTAC.  
**⚠** When local altimeter setting not received, use Fond Du Lac altimeter setting and increase all MDA 40 feet; increase Circling Cat D visibility ¼ mile. Circling to Rwy 5, 23, and 31 NA at night. Helicopter visibility reduction below ¾ SM NA.

**MISSED APPROACH:** Climb to 1300 then climbing left turn to 3000 on OSH R-111 to LEWKO INT/OSH 15.1 DME and hold.

ATIS <b>125.9</b>	MILWAUKEE APP CON <b>127.0 263.075</b>	<b>OSHKOSH TOWER ★</b> <b>118.5 (CTAF) 290.9</b>	GND CON <b>132.3</b>	UNICOM <b>122.95</b>
----------------------	---	---	-------------------------	-------------------------



CATEGORY	A	B	C	D
S-18	1240-1	446 (500-1)	1240-1 <sup>3</sup> / <sub>8</sub>	446 (500-1 <sup>3</sup> / <sub>8</sub> )
<b>C</b> CIRCLING	1280-1 472 (500-1)	1300-1 492 (500-1)	1360-1 <sup>1</sup> / <sub>2</sub> 552 (600-1 <sup>1</sup> / <sub>2</sub> )	1440-2 632 (700-2)

EC-3, 22 APR 2021 to 20 MAY 2021

EC-3, 22 APR 2021 to 20 MAY 2021