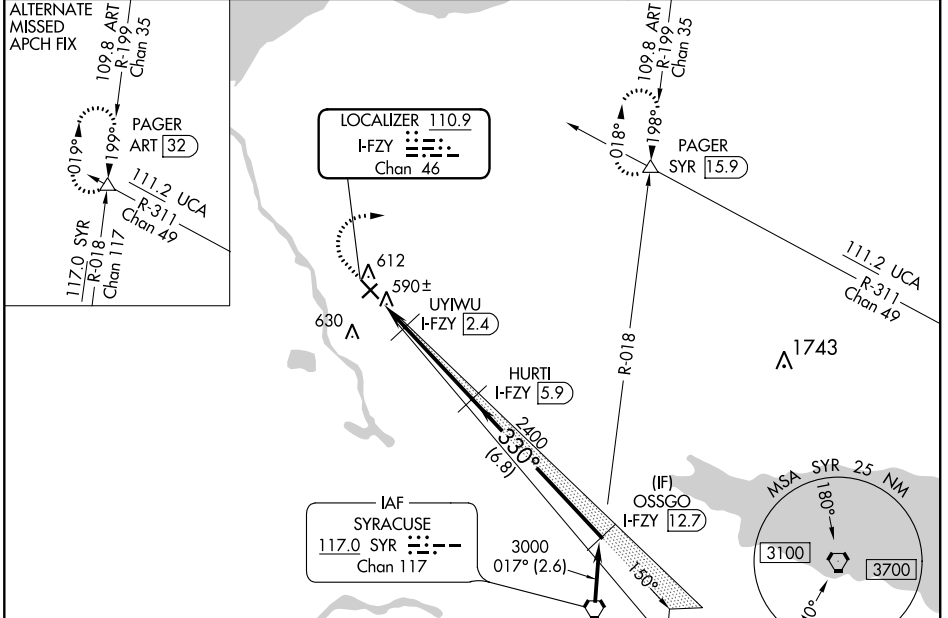


LOC/DME I-FZY <b>110.9</b> Chan 46	APP CRS <b>330°</b>	Rwy Idg TDZE Apt Elev	<b>4782</b> <b>471</b> <b>475</b>
--	------------------------	-----------------------------	---

# ILS or LOC RWY 33

OSWEGO COUNTY (FZY)

DME required.		MISSED APPROACH: Climb to 1200 then climbing right turn to 3000 on heading 100° and SYR VORTAC R-018 to PAGER/SYR 15.9 DME and hold.
<p>▽</p> <p>▲ NA</p> <p>Circling Rwy 24 NA at night. Rwy 33 helicopter visibility reduction below 3/4 SM NA.</p>	ASOS <b>119.275</b>	SYRACUSE APP CON <b>126.125 269.125</b>
	UNICOM <b>123.0 (CTAF) 0</b>	

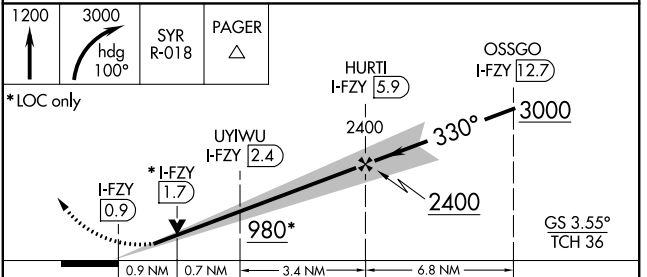
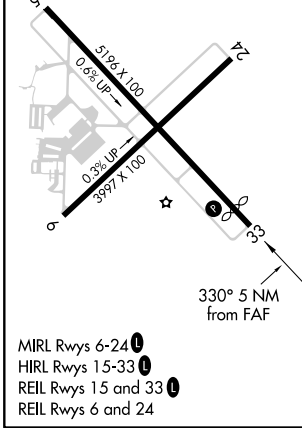


NE-2, 22 APR 2021 to 20 MAY 2021

NE-2, 22 APR 2021 to 20 MAY 2021

ELEV 475	<b>D</b>	TDZE 471
----------	----------	----------

Procedure NA for arrivals at SYR VORTAC on V29 southbound.



CATEGORY	A	B	C	D
S-ILS 33	814-1	343 (400-1)		NA
S-LOC 33	840-1	369 (400-1)		NA
<b>C</b> CIRCLING	920-1 445 (500-1)	940-1 465 (500-1)	960-1½ 485 (500-1½)	NA