

WAAS CH 72820 W15A	APP CRS 150°	Rwy Idg TDZE Apt Elev	5196 462 475
--	------------------------	-----------------------------	---

RNAV (GPS) RWY 15

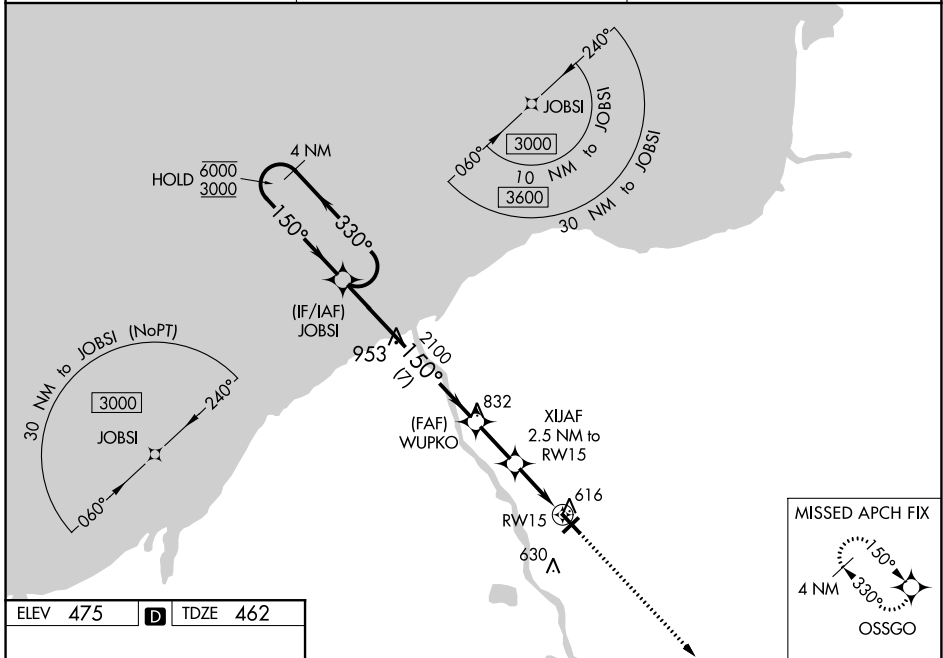
OSWEGO COUNTY (FZY)

RNP APCH.

▽ Rwy 15 helicopter visibility reduction below ¾ SM NA.
▲ For uncompensated Baro-VNAV systems, LNAV/VNAV NA below -24°C or above 54°C.

MISSED APPROACH:
Climb to 3000 direct OSSGO and hold.

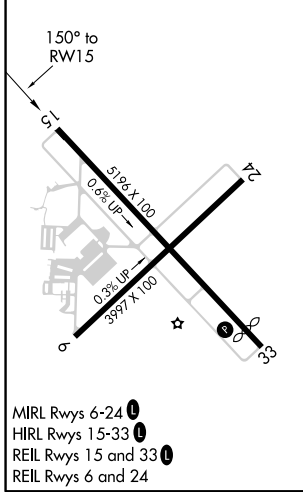
ASOS 119.275	SYRACUSE APP CON 126.125 269.125	UNICOM 123.0 (CTAF) 0
------------------------	--	---------------------------------



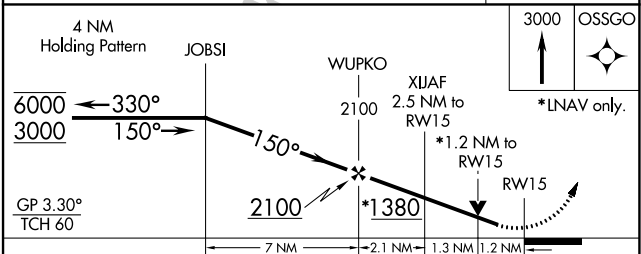
NE-2, 22 APR 2021 to 20 MAY 2021

NE-2, 22 APR 2021 to 20 MAY 2021

ELEV 475	D	TDZE 462
-----------------	----------	-----------------



- MIRL Rwy 6-24
- HIRL Rwy 15-33
- REIL Rwy 15 and 33
- REIL Rwy 6 and 24



CATEGORY	A	B	C	D
LPV DA	783-1 321 (400-1)			NA
LNAV/VNAV DA	887-1¼ 425 (500-1¼)			NA
LNAV MDA	920-1	458 (500-1)	920-1⅜ 458 (500-1⅜)	NA
CIRCLING	920-1 445 (500-1)	940-1 465 (500-1)	960-1½ 485 (500-1½)	NA