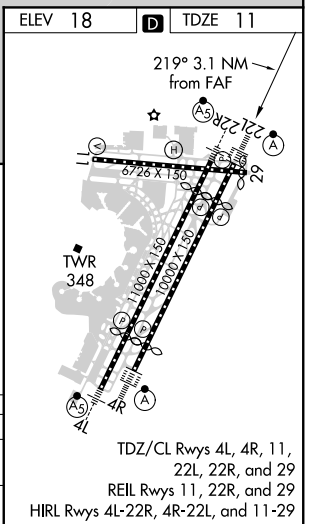
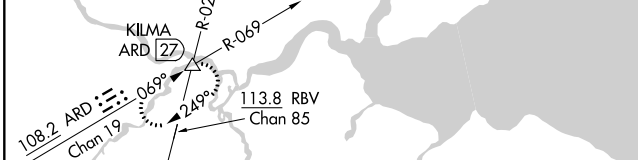
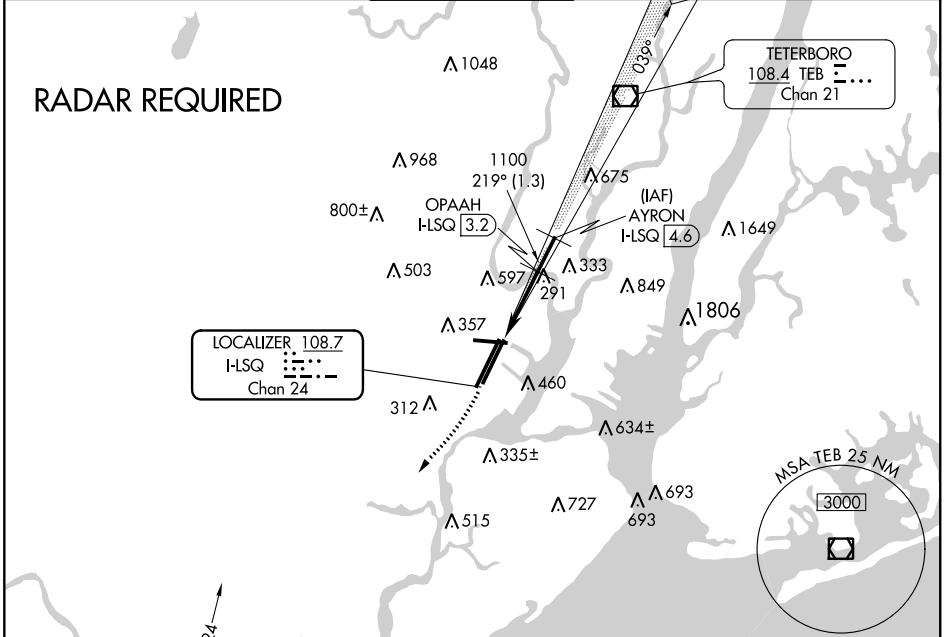


LOC/DME I-LSQ 108.7 Chan 24	APP CRS 219°	Rwy ldg 8207 TDZE 11 Apt Elev 18
---	------------------------	---

COPTER ILS/DME RWY 22L

NEWARK LIBERTY INTL (EWR)

ALSF-2 		MISSED APPROACH: Climbing right turn to 2000 heading 225° then climbing right turn to 3000 via ARD R-069 to KILMA INT and hold.			
D-ATIS 115.7 134.825	NEW YORK APP CON 128.55 379.9	NEWARK TOWER 118.3 257.6	GND CON 121.8	CLNC DEL 118.85	CPDLC



2000 hdg 225°	3000	ARD R-069	KILMA Δ	VGSI and ILS glidepath not coincident (VGSI Angle 3.00/TCH 60). OPAAH ILSQ 3.2 AYRON ILSQ 4.6
HLSQ 0.2	HLSQ 1.7	1091	219°	1500
1.5 NM	1.5 NM	1.3 NM	1100	GS 3.00° HCH 43
CATEGORY	COPTER	B	C	D
H-ILS 22L	211/12 200 (200-¼)		NA	
H-LOC 22L	560/12 549 (600-¼)		NA	

COPTER ILS/DME RWY 22L

NE-2, 15 JUL 2021 to 12 AUG 2021

NE-2, 15 JUL 2021 to 12 AUG 2021