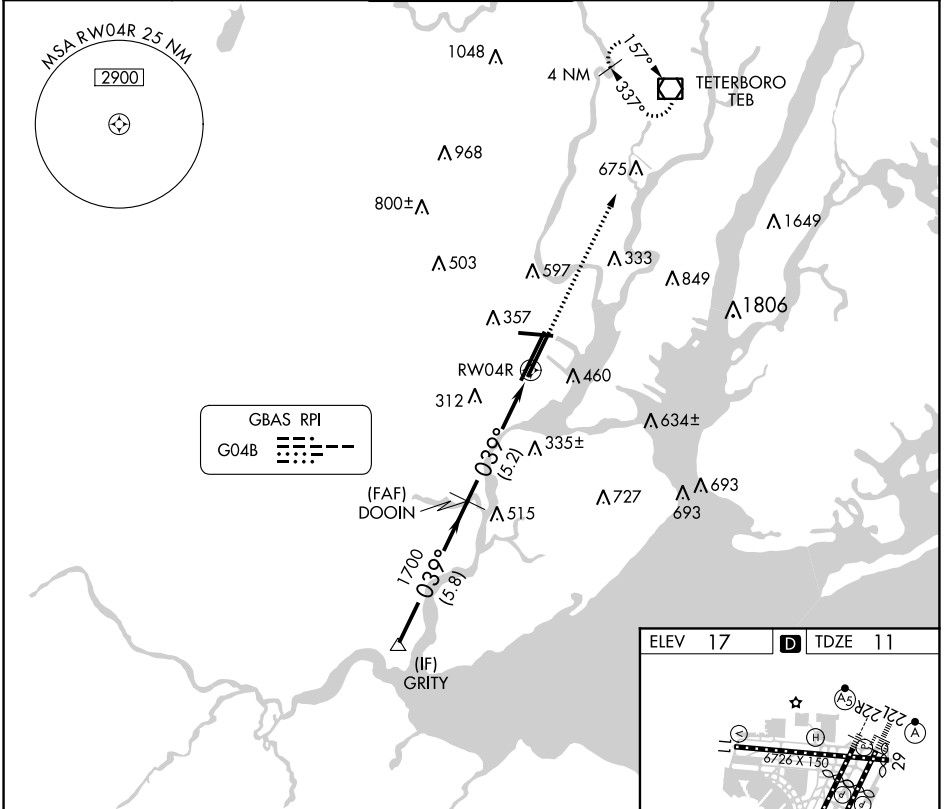


GBAS CH 21083 G04B	APP CRS 039°	Rwy Idg 8810 TDZE 11 Apt Elev 17
--	------------------------	---

GLS RWY 4R

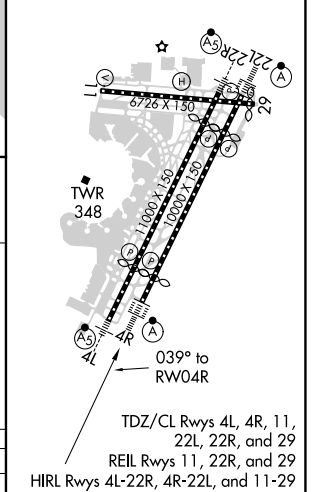
NEWARK LIBERTY INTL (EWR)

RNP APCH. GPS required.		ALSF-2	MISSED APPROACH: Climb to 600 then climbing right turn to 3000 direct TEB VOR/DME and hold, continue climb-in-hold in 3000.		
Autopilot coupled approach NA below 211.					
D-ATIS 115.7 134.825	NEW YORK APP CON 128.55 379.9	NEWARK TOWER 118.3 257.6	GND CON 121.8	CLNC DEL 118.85	CPDLC

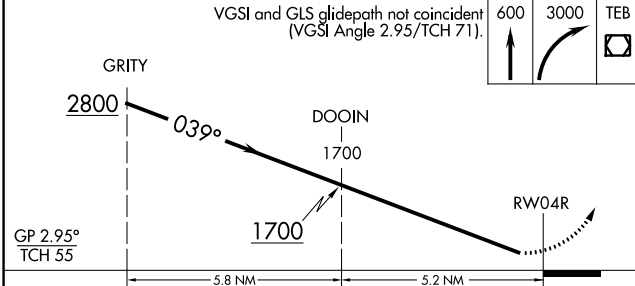


GBAS RPI
G04B

ELEV 17	D TDZE 11
---------	------------------



VGSI and GLS glidepath not coincident (VGSI Angle 2.95/TCH 71).



CATEGORY	A	B	C	D
GLS DA		211/18	200 (200-1/2)	

GLS RWY 4R

NE-2, 15 JUL 2021 to 12 AUG 2021

NE-2, 15 JUL 2021 to 12 AUG 2021