

LOC/DME I-GPR 109.15 Chan 28 (Y)	APP CRS 107°	Rwy ldg 6726 TDZE 17 Apt Elev 17
---	------------------------	---

ILS or LOC RWY 11

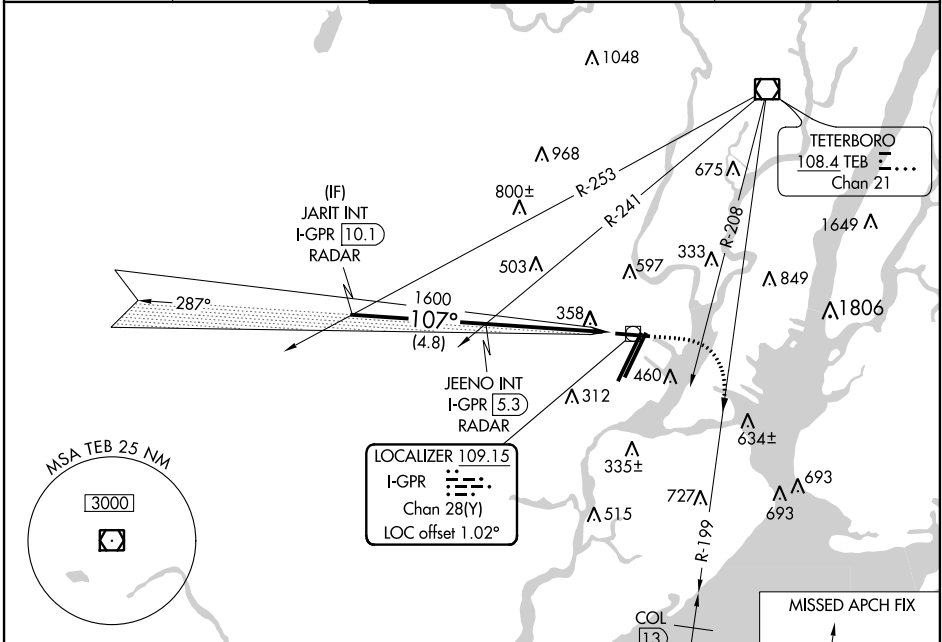
NEWARK LIBERTY INTL (EWR)

DME required. RADAR required for procedure entry.

When Circling to Rwy 29 at night, operational VGSi required, remain on or above VGSi glidepath until threshold.

MISSED APPROACH: Climb to 1700 heading 107°, at TEB VOR/DME R-208 right turn to intercept TEB VOR/DME R-199 and COL VOR/DME R-019 to COL VOR/DME and hold. At COL 13 DME climb to 3000.

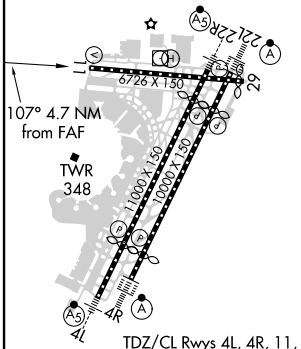
D-ATIS 115.7 134.825	NEW YORK APP CON 128.55 379.9	NEWARK TOWER 118.3 257.6	GND CON 121.8	CLNC DEL 118.85	CPDLC
--------------------------------	---	------------------------------------	-------------------------	---------------------------	-------



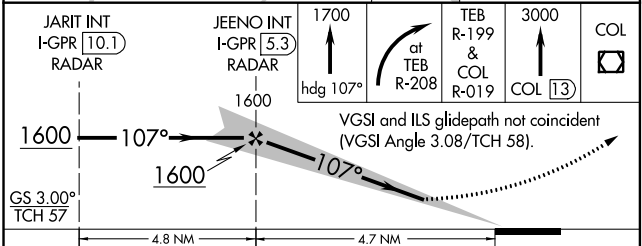
NE-2, 15 JUL 2021 to 12 AUG 2021

NE-2, 15 JUL 2021 to 12 AUG 2021

ELEV 17	D	TDZE 17
---------	----------	---------



JARIT INT I-GPR 10.1 (RADAR)	JEENO INT I-GPR 5.3 (RADAR)	1700 hdg 107°	TEB R-199 & COL R-019	3000 COL 13	COL
------------------------------	-----------------------------	------------------	-----------------------	----------------	-----



CATEGORY	A	B	C	D
S- ILS 11	603-2 586 (600-2)			
S- LOC 11	580/50	563 (600-1)	580-1½ 563 (600-1½)	580-1¾ 563 (600-1¾)
C CIRCLING	760-1 743 (800-1)	820-1 803 (900-1)	900-2¾ 883 (900-2¾)	900-3 883 (900-3)