

LOC/DME I-EWR	APP CRS	Rwy Idg	4L	4R
<b>110.75</b>	<b>039°</b>		<b>8460</b>	<b>8810</b>
Chan 44 (Y)		TDZE	<b>10</b>	<b>11</b>
		Apt Elev	<b>17</b>	<b>17</b>

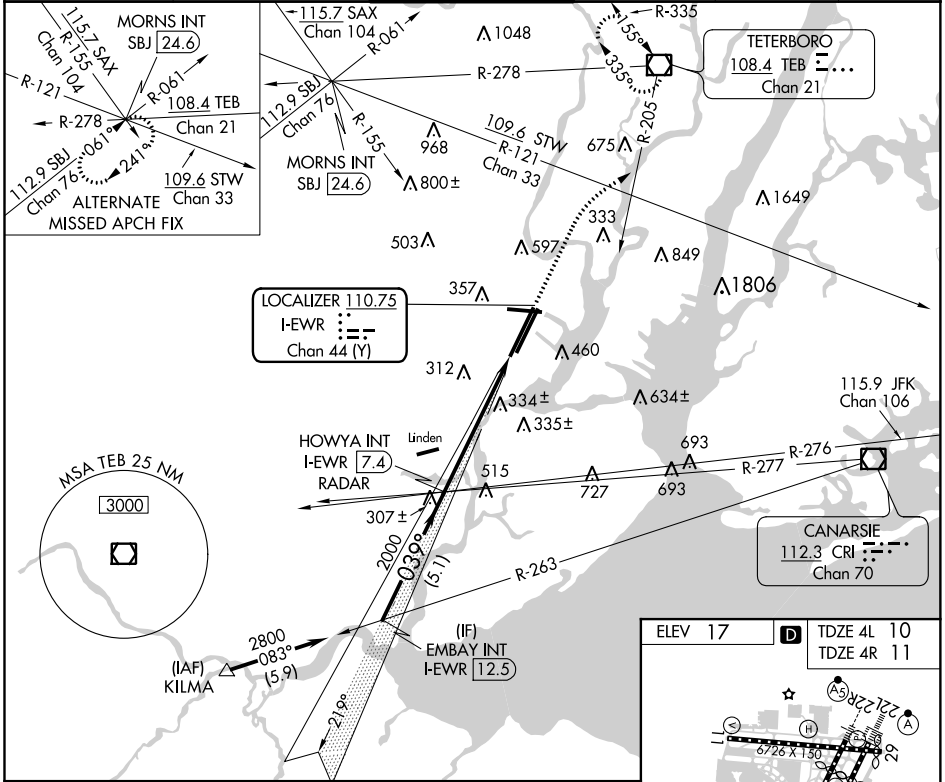
# ILS or LOC RWY 4L

NEWARK LIBERTY INTL (EWR)

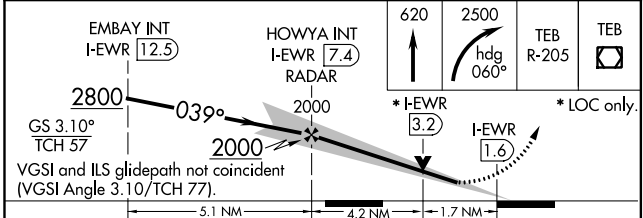
**▼** For inoperative MALSR, increase S-LOC 4L and sidestep 4R Cat C visibility to 1 3/4 mile. Inoperative table does not apply to sidestep Rwy 4R Cats A and B. When Circling to Rwy 29 at night, operational VGSI required, remain on or above VGSI glidepath until threshold.

**▲** MISSED APPROACH: Climb to 620 then climbing right turn to 2500 on heading 060° and TEB VOR/DME R-205 to TEB VOR/DME and hold.

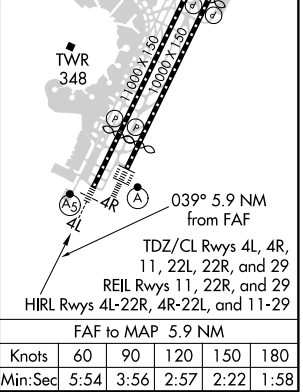
D-ATIS	NEW YORK APP CON	NEWARK TOWER	GND CON	CLNC DEL	CPDLC
<b>115.7 134.825</b>	<b>128.55 379.9</b>	<b>118.3 257.6</b>	<b>121.8</b>	<b>118.85</b>	



ELEV 17	TDZE 4L 10	TDZE 4R 11



CATEGORY	A	B	C	D
S-ILS 4L	210/18 200 (200-1/2)			
S-LOC 4L	620/24	610 (700-1/2)	620-1 3/8	610 (700-1 3/8)
SIDESTEP 4R	620/50	609 (700-1)	620-1 3/8	620-1 1/2
			609 (700-1 3/8)	609 (700-1 1/2)
<b>C</b> CIRCLING	760-1	820-1	900-2 3/4	900-3
	743 (800-1)	803 (900-1)	883 (900-2 3/4)	883 (900-3)



NE-2, 15 JUL 2021 to 12 AUG 2021

NE-2, 15 JUL 2021 to 12 AUG 2021