

WAAS CH <b>77524</b> <b>W22B</b>	APP CRS <b>219°</b>	Rwy Idg <b>9560</b> TDZE <b>10</b> Apt Elev <b>17</b>
----------------------------------------	------------------------	-------------------------------------------------------------

# RNAV (GPS) RWY 22R

NEWARK LIBERTY INTL (EWR)

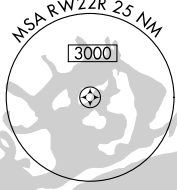
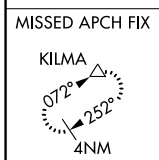
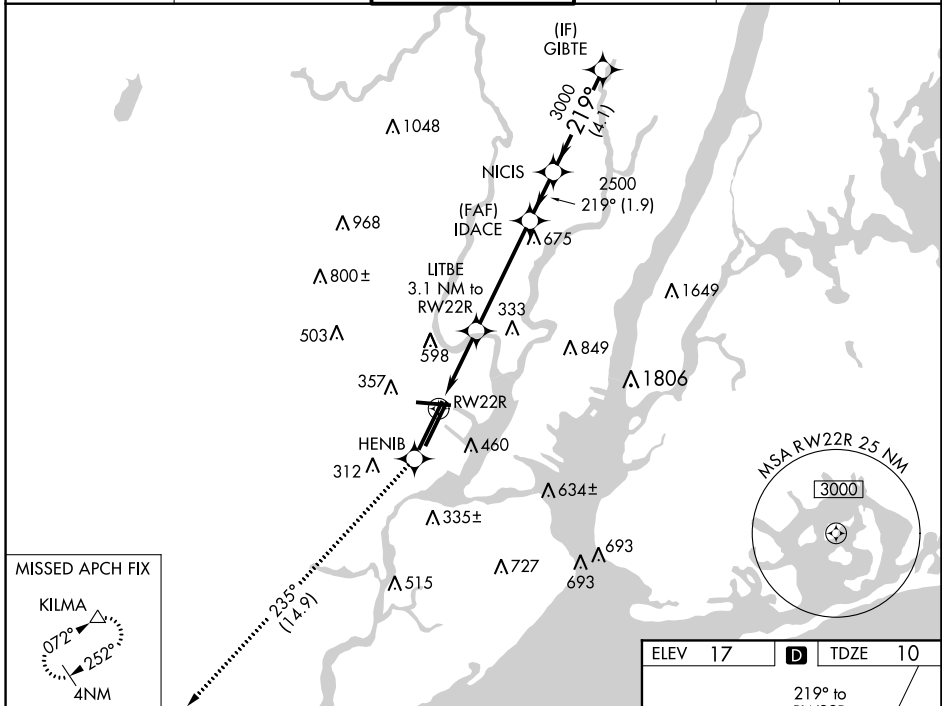
RNP APCH.

For inop ALS, increase LPV visibility to RVR 6000 all Cats. When Circling to Rwy 29 at night, operational VGSI required, remain on or above VGSI glidepath until threshold.

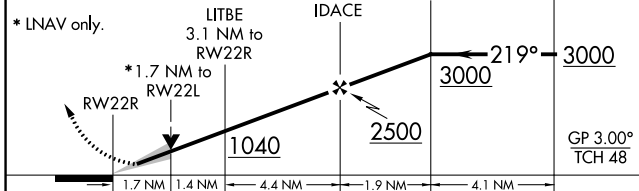


MISSED APPROACH: Climb to 3000 direct HENIB and on track 235° to KILMA and hold.

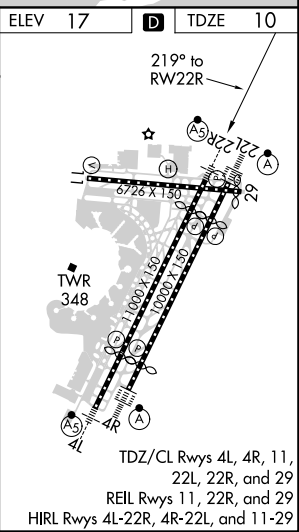
D-ATIS <b>115.7 134.825</b>	NEW YORK APP CON <b>128.55 379.9</b>	NEWARK TOWER <b>118.3 257.6</b>	GND CON <b>121.8</b>	CLNC DEL <b>118.85</b>	CPDLC
--------------------------------	-----------------------------------------	------------------------------------	-------------------------	---------------------------	-------



3000 HENIB tr 235° KILMA  
 VGSI and RNAV glidepath not coincident (VGSI Angle 3.10/TCH 70).



CATEGORY	A		B		C		D
LPV DA	361/40		351 (400-3/4)				
LNAV/VNAV DA	NA						
LNAV MDA	620/24	610 (700-1/2)	620/60	610 (700-1/4)	620-1 1/2	610 (700-1/2)	
CIRCLING	760-1 1/4	820-1 1/4	900-2 3/4	883 (900-2 3/4)	900-3	883 (900-3)	
	743 (800-1 1/4)	803 (800-1 1/4)	883 (900-2 3/4)				



# RNAV (GPS) RWY 22R

NE-2, 15 JUL 2021 to 12 AUG 2021

NE-2, 15 JUL 2021 to 12 AUG 2021