

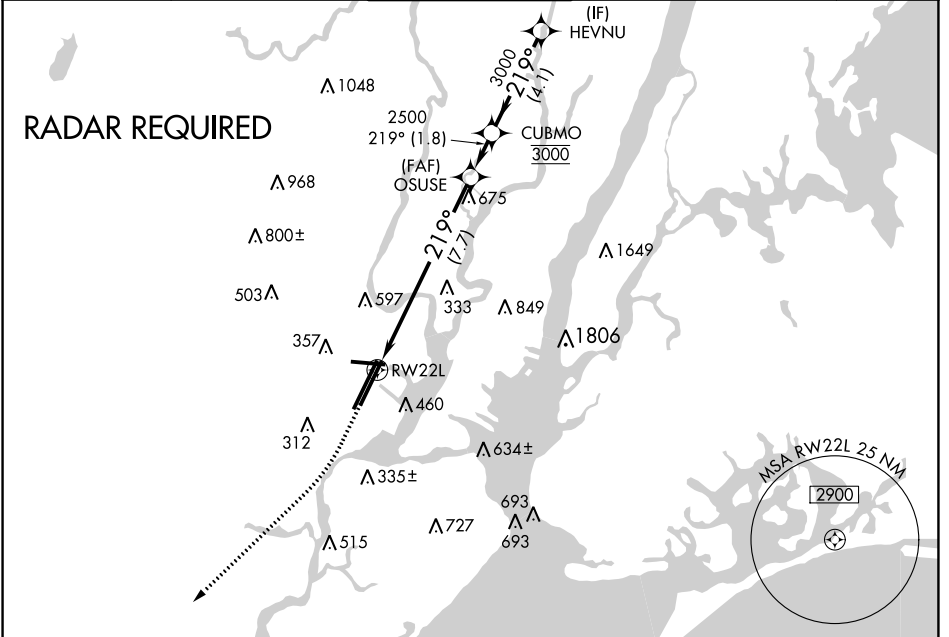
APP CRS <b>219°</b>	Rwy Idg <b>8207</b>
	TDZE <b>11</b>
	Apt Elev <b>17</b>

# RNAV (RNP) Y RWY 22L

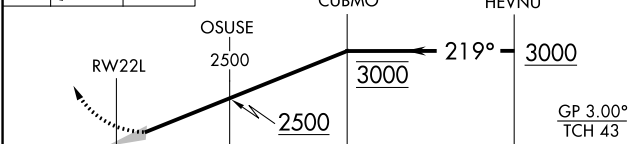
NEWARK LIBERTY INTL (EWR)

<p>For uncompensated Baro-VNAV systems, procedure NA below -13°C (9°F) or above 54°C (130°F). GPS required.</p>	<p>ALSIF-2</p>	<p>MISSED APPROACH: Climb to 600 then climbing right turn to 3000 direct KILMA and hold.</p>

D-ATIS <b>115.7 134.825</b>	NEW YORK APP CON <b>128.55 379.9</b>	NEWARK TOWER <b>118.3 257.6</b>	GND CON <b>121.8</b>	CLNC DEL <b>118.85</b>	CPDLC
--------------------------------	-----------------------------------------	------------------------------------	-------------------------	---------------------------	-------

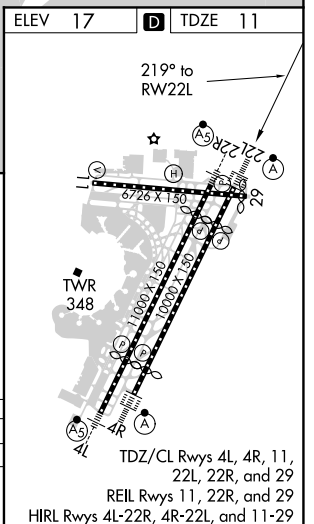


ELEV 600	3000	KILMA	VGSI and RNAV glidepath not coincident (VGSI Angle 3.00/TCH 60).



CATEGORY	A	B	C	D
RNP 0.30 DA	436/50		425 (500-1)	

**AUTHORIZATION REQUIRED**



NE-2, 15 JUL 2021 to 12 AUG 2021

NE-2, 15 JUL 2021 to 12 AUG 2021