

# RNAV (RNP) Z RWY 4R

NEWARK LIBERTY INTL (EWR)

APP CRS	Rwy Idg	<b>8810</b>
<b>039°</b>	TDZE	<b>11</b>
	Apt Elev	<b>17</b>

RNP AR APCH.

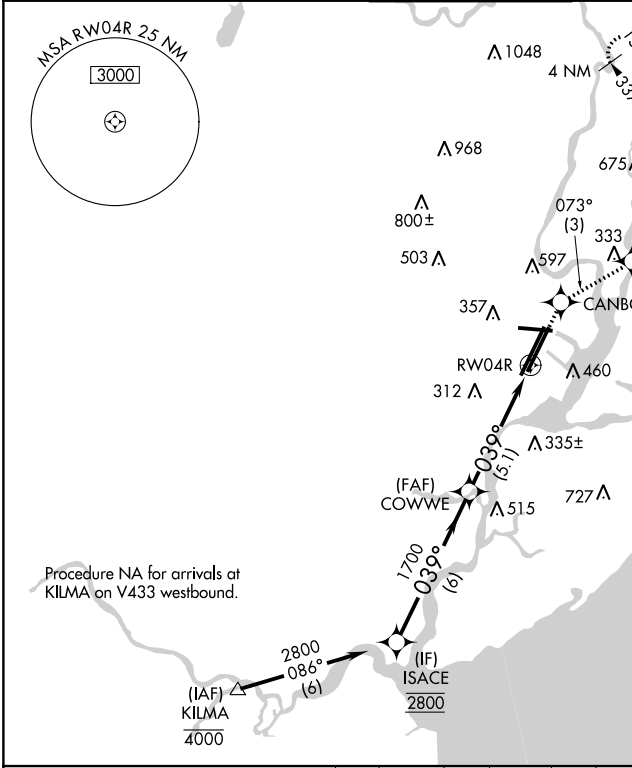
▼ For uncompensated Baro-VNAV systems, procedure NA below -3°C or above 54°C. For inop ALS, increase RNP 0.15 all Cats visibility to RVR 6000 and RNP 0.30 all Cats visibility to 1 3/8 SM.  
 ▲ NA \*Missed approach requires minimum climb of 317 feet per NM to 700.

ALSF-2

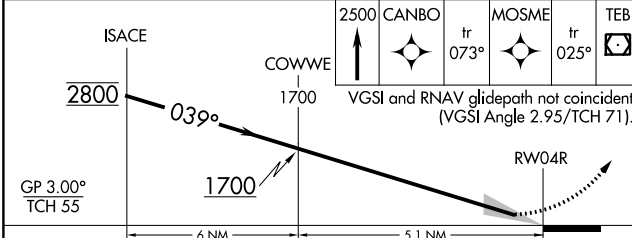
ⓐ

MISSED APPROACH: Climb to 2500 direct CANBO and on track 073° to MOSME and on track 025° to TEB VOR/DME and hold.

D-ATIS	NEW YORK APP CON	NEWARK TOWER	GND CON	CLNC DEL	CPDLC
<b>115.7 134.825</b>	<b>128.55 379.9</b>	<b>118.3 257.6</b>	<b>121.8</b>	<b>118.85</b>	



ELEV 17	<b>D</b>	TDZE 11
---------	----------	---------



CATEGORY	A	B	C	D
*RNP 0.15 DA		396/40	385 (400-3/4)	
RNP 0.30 DA		490/60	479 (500-1/4)	

**AUTHORIZATION REQUIRED**

NE-2, 15 JUL 2021 to 12 AUG 2021

NE-2, 15 JUL 2021 to 12 AUG 2021