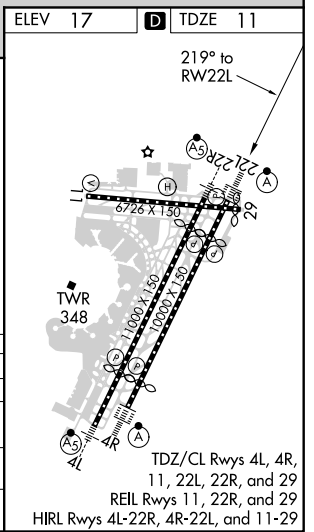
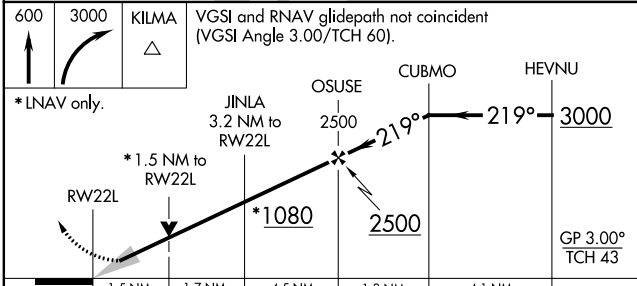
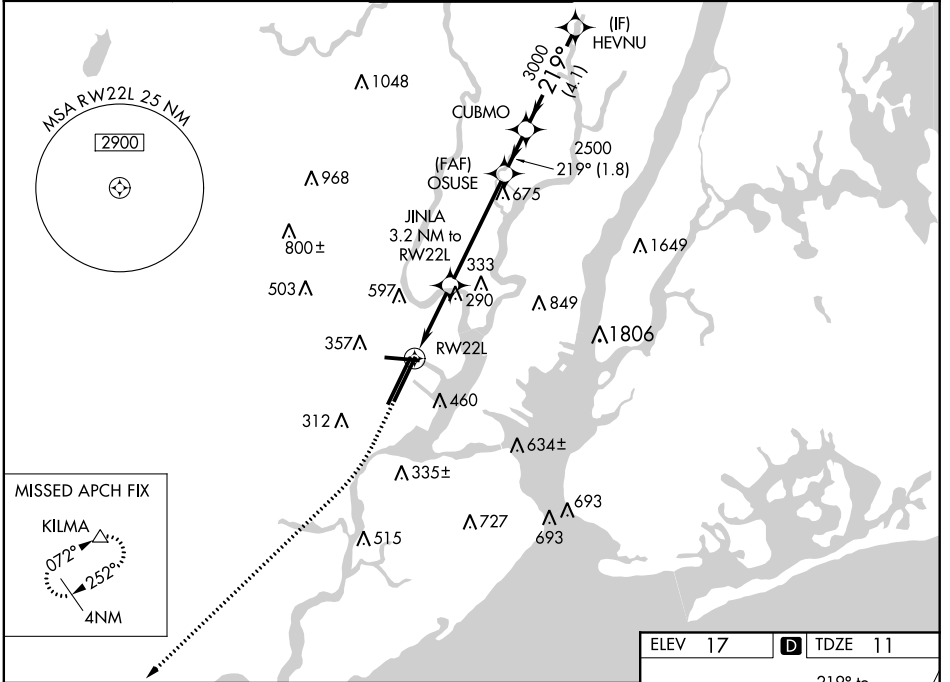


WAAS CH <b>70324</b> <b>W22A</b>	APP CRS <b>219°</b>	Rwy Idg <b>8207</b> TDZE <b>11</b> Apt Elev <b>17</b>
--	------------------------	---

# RNAV (GPS) Z RWY 22L

NEWARK LIBERTY INTL (EWR)

RNP APCH.		NEWARK TOWER <b>118.3 257.6</b>		GND CON <b>121.8</b>	CLNC DEL <b>118.85</b>	CPDLC
<p>⚠ For uncompensated Baro-VNAV systems, LNAV/VNAV NA below -13°C or above 54°C. For inop ALS, increase LNAV/VNAV all Cats visibility to 1 3/8 mile. When Circling to Rwy 29 at night, operational VGSI required, remain on or above VGSI glidepath until threshold.</p>				<p>ALSF-2</p>		<p>MISSED APPROACH: Climb to 600 then climbing right turn to 3000 direct KILMA and hold.</p>



ELEV 17	TDZE 11			
600	3000	KILMA	VGSI and RNAV glidepath not coincident (VGSI Angle 3.00/TCH 60).	
*LNAV only.				
RW22L	JINLA 3.2 NM to RW22L	OSUSE 2500	CUBMO HEVNU 3000	
1.5 NM	1.7 NM	4.5 NM	1.8 NM 4.1 NM	
GP 3.00° TCH 43				
CATEGORY	A	B	C	D
LPV DA	211/18		200 (200-1/2)	
LNAV/VNAV DA	462/50		451 (500-1)	
LNAV MDA	560/24	549 (600-1/2)	560/60	549 (600-1 1/4)
CIRCLING	760-1 743 (800-1)	820-1 803 (900-1)	900-2 3/4 883 (900-2 3/4)	900-3 883 (900-3)

NE-2, 15 JUL 2021 to 12 AUG 2021

NE-2, 15 JUL 2021 to 12 AUG 2021