

VOR/DME JFK	APP CRS	Rwy ldg	6726
115.9	115°	TDZE	17
Chan 106		Apt Elev	17

VOR RWY 11

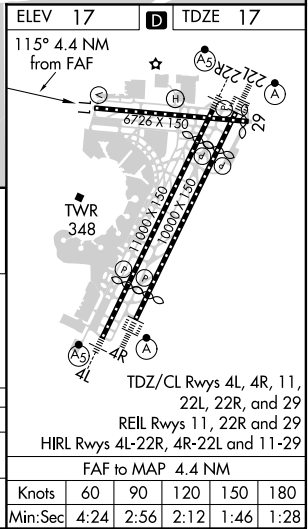
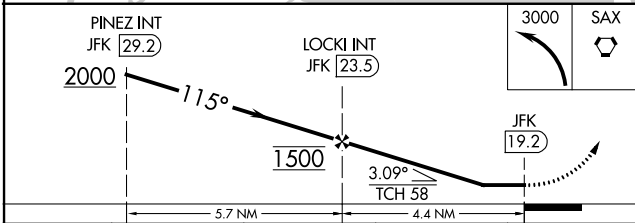
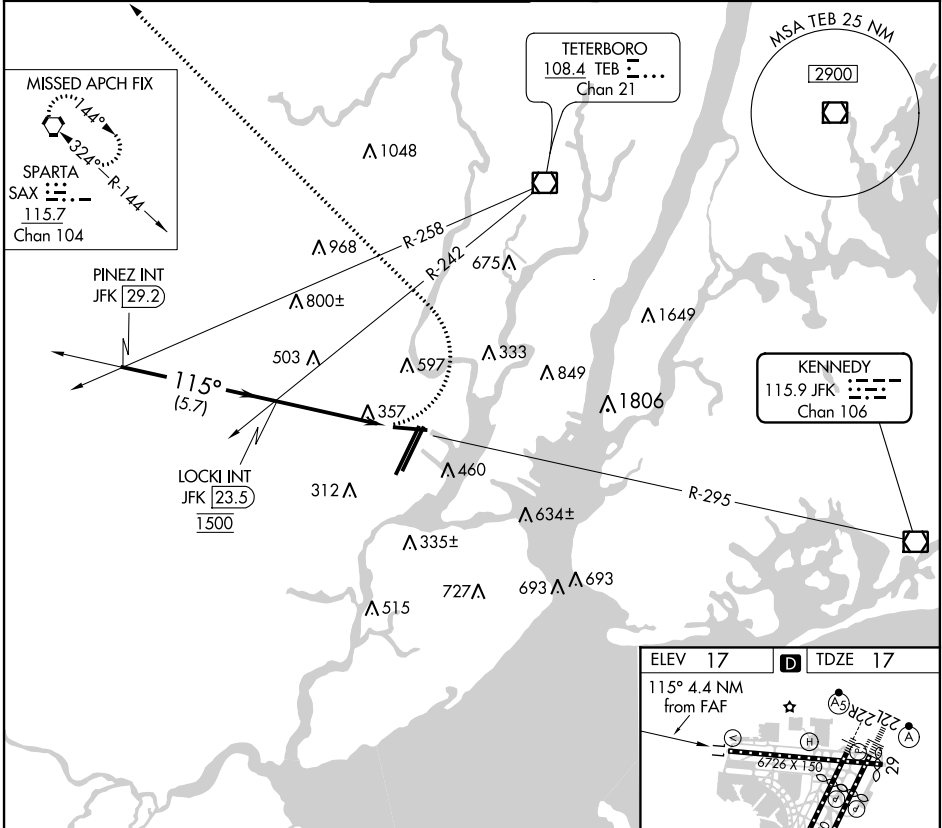
NEWARK LIBERTY INTL (EWR)

RADAR required for procedure entry.

▼ Rwy 11 helicopter visibility reduction below 1 SM NA.
▲ Straight-in Rwy 11 NA at night.

MISSED APPROACH: Climbing left turn to 3000 direct SAX VORTAC and hold.

D-ATIS	NEW YORK APP CON	NEWARK TOWER	GND CON	CLNC DEL	CPDLC
115.7 134.825	128.55 379.9	118.3 257.6	121.8	118.85	



CATEGORY	A	B	C	D
S-11	1000-1¼ 983 (1000-1¼)	1000-1½ 983 (1000-1½)	1000-3	983 (1000-3)
☐ CIRCLING	1000-1¼ 983 (1000-1¼)	1000-1½ 983 (1000-1½)	1000-3	983 (1000-3)

FAF to MAP 4.4 NM	Knots	60	90	120	150	180
	Min:Sec	4:24	2:56	2:12	1:46	1:28

NE-2, 15 JUL 2021 to 12 AUG 2021

NE-2, 15 JUL 2021 to 12 AUG 2021