

| | |
|------------------------|-------------------------|
| APP CRS 170° | Rwy Idg 8308 |
| | TDZE 4729 |
| | Apt Elev 4729 |

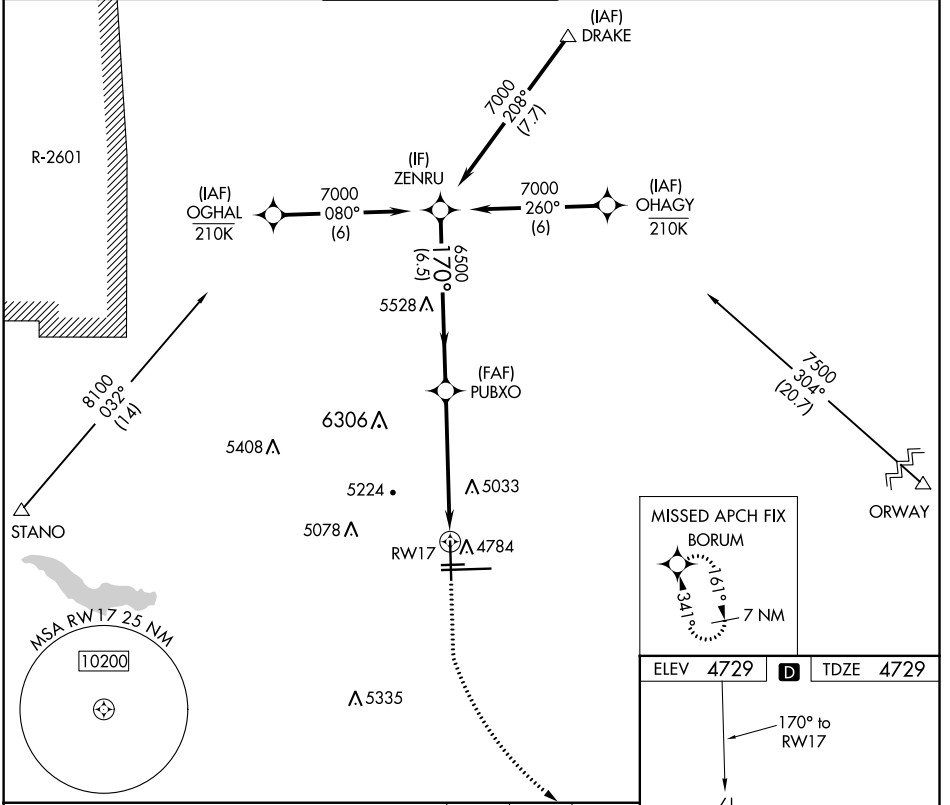
RNAV (GPS) RWY 17

PUEBLO MEML (PUB)

⚠ DME/DME RNP-0.3 NA. Rwy 17 helicopter reduction below ¾ SM NA.
⚠ VDP NA when using La Junta altimeter setting. When local altimeter setting not received, use La Junta altimeter setting and increase all MDA 200 feet; increase LNAV Cat B visibility and Circling Cat B/C visibility ¼ mile, Circling Cat D visibility ½ mile.

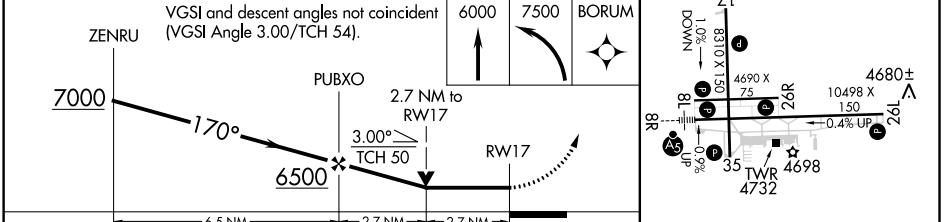
MISSED APPROACH: Climb to 6000 then climbing left turn to 7500 direct BORUM and hold.

| | | | | | |
|-----------------------|--|---|-------------------------|--------------------------|-------------------------|
| ATIS 125.25 | DENVER APP CON ★ 120.1 290.5 | PUEBLO TOWER ★ 119.1 (CTAF) 257.8 | GND CON 121.9 | CLNC DEL 120.9 | UNICOM 122.95 |
|-----------------------|--|---|-------------------------|--------------------------|-------------------------|



SW-1, 15 JUL 2021 to 12 AUG 2021

SW-1, 15 JUL 2021 to 12 AUG 2021



| | | | | |
|----------|---------|---------------|--------------------------|------------------------|
| CATEGORY | A | B | C | D |
| LNAV MDA | 5640-1¼ | 911 (1000-1¼) | 5640-2½ | 911 (1000-2½) |
| CIRCLING | 5640-1¼ | 911 (1000-1¼) | 5640-2¾ 911 (1000-2¾) | 5640-3 911 (1000-3) |

HIRL Rwy 8R-26L
 MIRL Rws 17-35 and 8L-26R
 REIL Rws 8L, 17, 26L, 26R and 35