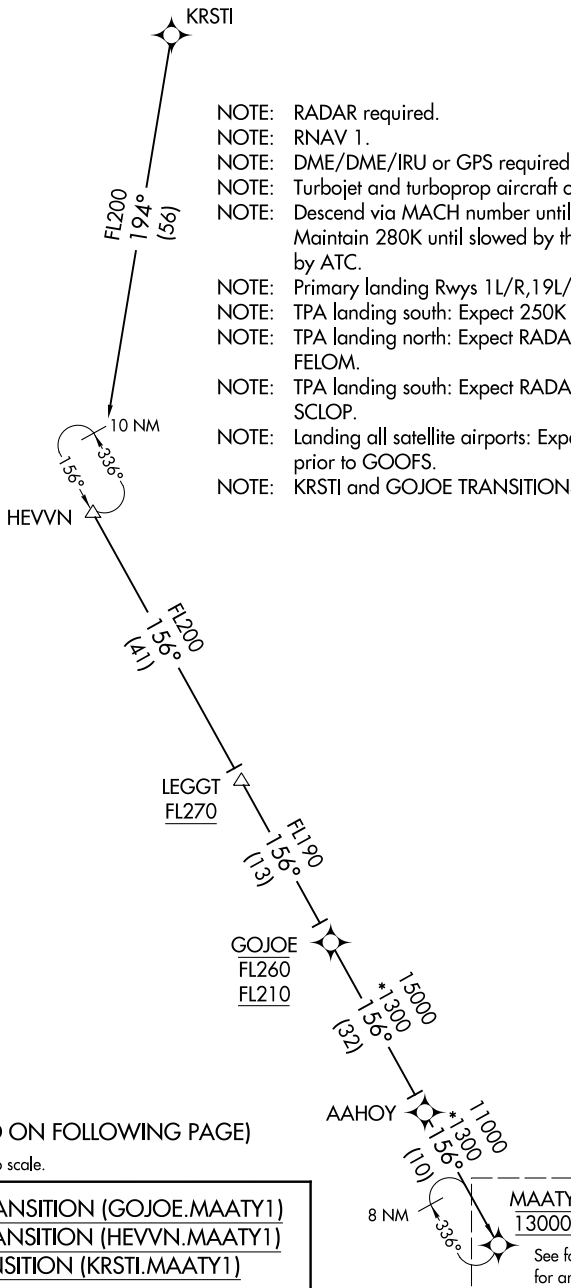


TAMPA APP CON
118.8 239.3
KMCF ATIS
133.825 270.1
LAL ATIS
118.025
TPA D-ATIS
126.45
VDF AWOS-3
121.125

- NOTE: RADAR required.
- NOTE: RNAV 1.
- NOTE: DME/DME/IRU or GPS required.
- NOTE: Turbojet and turboprop aircraft only.
- NOTE: Descend via MACH number until intercepting 280K. Maintain 280K until slowed by the STAR or assigned by ATC.
- NOTE: Primary landing Rwy's 1L/R, 19L/R.
- NOTE: TPA landing south: Expect 250K at MAATY.
- NOTE: TPA landing north: Expect RADAR vectors prior to FELOM.
- NOTE: TPA landing south: Expect RADAR vectors prior to SCLOP.
- NOTE: Landing all satellite airports: Expect RADAR vectors prior to GOOFS.
- NOTE: KRSTI and GOJOE TRANSITIONS, ATC assigned only.



(CONTINUED ON FOLLOWING PAGE)

NOTE: Chart not to scale.

GOJOE TRANSITION (GOJOE.MAATY1)
HEVNV TRANSITION (HEVNV.MAATY1)
KRSTI TRANSITION (KRSTI.MAATY1)

MAATY
13000
 See following page for arrival routes.

SE-3, 15 JUL 2021 to 12 AUG 2021

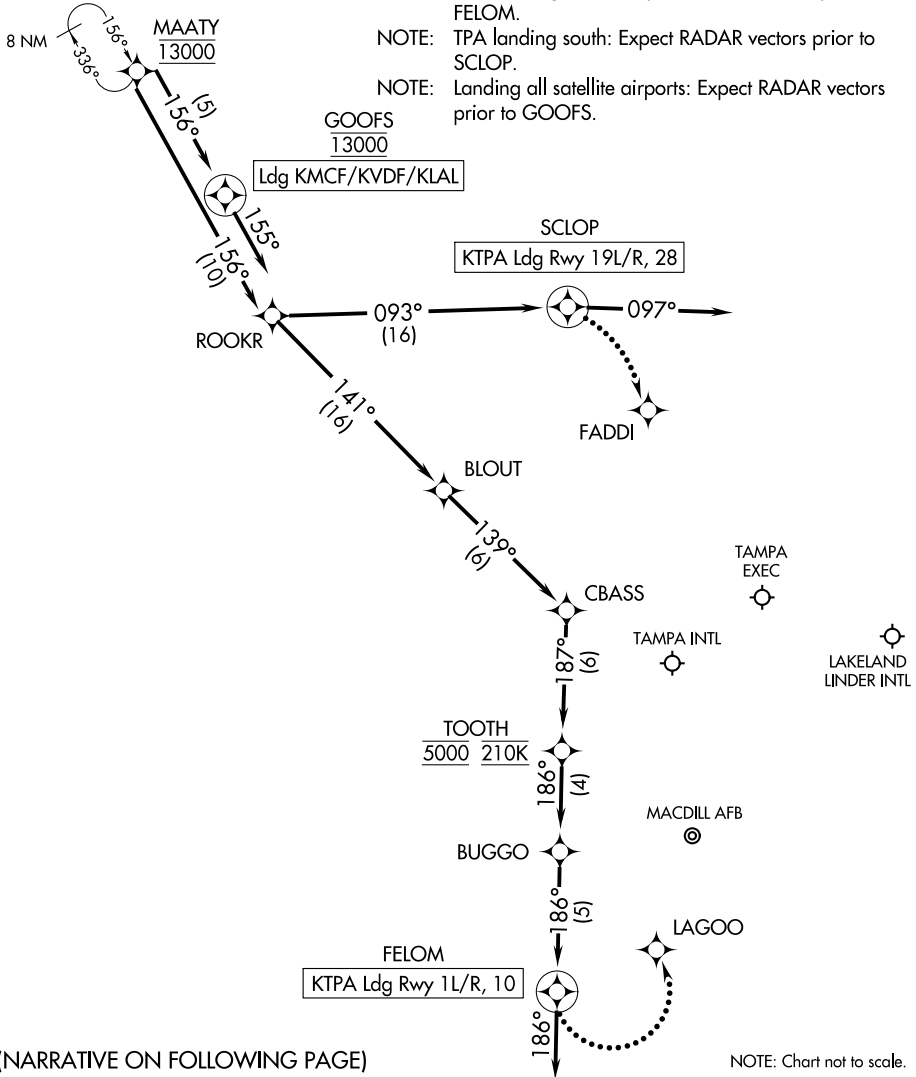
SE-3, 15 JUL 2021 to 12 AUG 2021

MAATY ONE ARRIVAL (RNAV) Arrival Routes

TAMPA, FLORIDA

TAMPA APP CON
118.8 239.3
KMCF ATIS
133.825 270.1
LAL ATIS
118.025
TPA D-ATIS
126.45
VDF AWOS-3
121.125

- NOTE: RADAR required.
- NOTE: RNAV 1.
- NOTE: DME/DME/IRU or GPS required.
- NOTE: Turbojet and turboprop aircraft only.
- NOTE: Descend via MACH number until intercepting 280K. Maintain 280K until slowed by the STAR or assigned by ATC.
- NOTE: Primary landing Rwy's 1L/R, 19L/R.
- NOTE: TPA landing south: Expect 250K at MAATY.
- NOTE: TPA Landing North: Expect RADAR vectors prior to FELOM.
- NOTE: TPA landing south: Expect RADAR vectors prior to SCLOP.
- NOTE: Landing all satellite airports: Expect RADAR vectors prior to GOOFS.



SE-3, 15 JUL 2021 to 12 AUG 2021

SE-3, 15 JUL 2021 to 12 AUG 2021

(NARRATIVE ON FOLLOWING PAGE)

NOTE: Chart not to scale.

MAATY ONE ARRIVAL (RNAV) Arrival Routes

TAMPA, FLORIDA

ARRIVAL ROUTE DESCRIPTION

KTPA: From MAATY on track 156° to ROOKR.

LANDING KTPA RUNWAYS 1L/R, 10: From ROOKR on track 141° to BLOUT, then on track 139° to CBASS, then on track 187° to cross TOOTH at 5000 and at 210K, then on track 186° to BUGGO, then on track 186° to FELOM, then on track 186°.

Expect RADAR vectors to final approach course.

LANDING KTPA RUNWAYS 19L/R, 28: From ROOKR on track 093° to SCLOP, then on heading 097° or as assigned by ATC. Expect RADAR vectors to final approach course.

LANDING KMCF/KVDF/KLAL: From MAATY on track 156° to cross GOOFS at 13000, then on heading 155° or as assigned by ATC. Expect RADAR vectors to final approach course.

LOST COMMUNICATIONS

KTPA LANDING NORTH: Continue track to FELOM, proceed direct LAGOO, intercept Rwy 1L final approach course, conduct approach.

KTPA LANDING SOUTH: Continue track to SCLOP, proceed direct FADDI, intercept Rwy 19R final approach course, conduct approach.

SE-3, 15 JUL 2021 to 12 AUG 2021

SE-3, 15 JUL 2021 to 12 AUG 2021