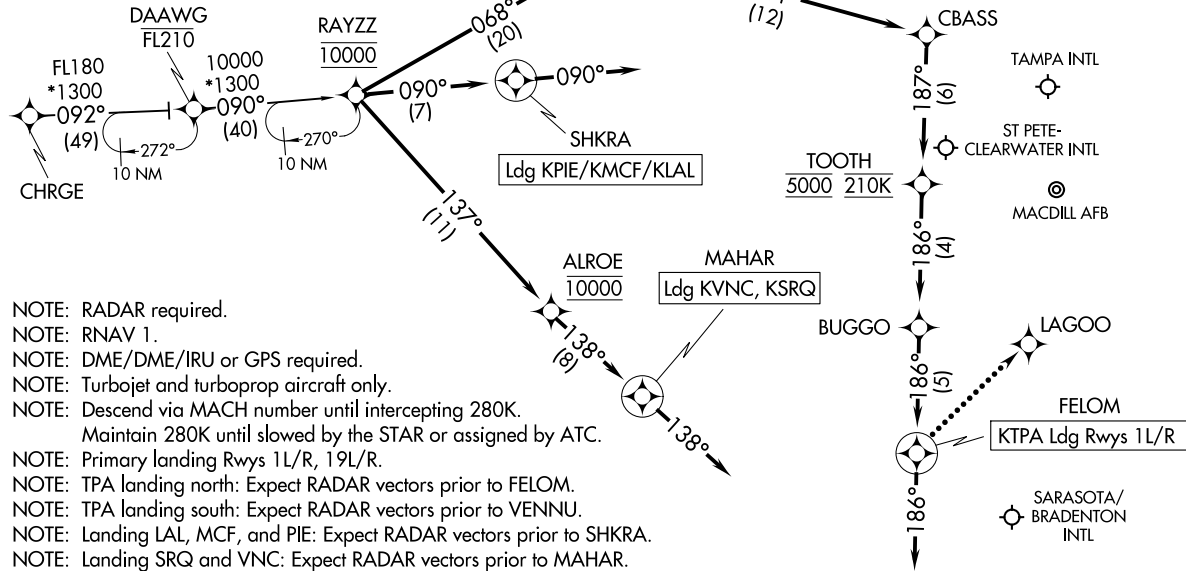


RAYZZ ONE ARRIVAL (RNAV)
(RAYZZ.RAYZZ1) 22APR21

TAMPA APP CON
118.8 239.3
KMCFL ATIS
133.825 270.1
LAL ATIS
118.025
PIE ATIS
134.5
SRQ ATIS
124.375
TPA D-ATIS
126.45

CHRG TRANSITION (CHRG.RAYZZ1)
DAAWG TRANSITION (DAAWG.RAYZZ1)



- NOTE: RADAR required.
- NOTE: RNAV 1.
- NOTE: DME/DME/IRU or GPS required.
- NOTE: Turbojet and turboprop aircraft only.
- NOTE: Descend via MACH number until intercepting 280K. Maintain 280K until slowed by the STAR or assigned by ATC.
- NOTE: Primary landing Rwy's 1L/R, 19L/R.
- NOTE: TPA landing north: Expect RADAR vectors prior to FELOM.
- NOTE: TPA landing south: Expect RADAR vectors prior to VENNU.
- NOTE: Landing LAL, MCF, and PIE: Expect RADAR vectors prior to SHKRA.
- NOTE: Landing SRQ and VNC: Expect RADAR vectors prior to MAHAR.
- NOTE: CHRG TRANSITION: GNSS only from CHRG to DAAWG.
- NOTE: DAAWG TRANSITION, ATC assigned only.

(NARRATIVE ON FOLLOWING PAGE)

NOTE: Chart not to scale.

TAMPA, FLORIDA

(RAYZZ.RAYZZ1) 21112
RAYZZ ONE ARRIVAL (RNAV)

AL-416 (FAA)

TAMPA, FLORIDA

ARRIVAL ROUTE DESCRIPTION

KTPA:

From RAYZZ on track 068° to HIDOS.

LANDING KTPA RUNWAYS 1L/R: From HIDOS on track 111° to CBASS, then on track 187° to cross TOOTH at 5000 and at 210K, then on track 186° to BUGGO, then on track 186° to FELOM, then on track 186°. Expect RADAR vectors to final approach course.

LANDING KTPA RUNWAYS 10, 28: From HIDOS on track 093° to BAYAD, then on heading 095° or as assigned by ATC. Expect RADAR vectors to final approach course.

LANDING KTPA RUNWAYS 19L/R: From HIDOS on track 093° to ENTAH, then on track 005° to VENNU, then on track 005°. Expect RADAR vectors to final approach course.

LANDING KPIE/KMCF/KLAL:

From RAYZZ on track 090° to SHKRA, then on track 090°. Expect RADAR vectors to final approach course.

LANDING KVNC/KSRQ:

From RAYZZ on track 137° to cross ALROE at 10000, then on track 138° to MAHAR, then on heading 138° or as assigned by ATC. Expect RADAR vectors to final approach course.

LOST COMMUNICATIONS

KTPA LANDING NORTH: Continue track to FELOM, proceed direct LAGOO, intercept Rwy 1L final approach course, conduct approach.

KTPA LANDING SOUTH: Continue track to VENNU, proceed direct FADDI, intercept Rwy 19R final approach course, conduct approach.

SE-3, 15 JUL 2021 to 12 AUG 2021

SE-3, 15 JUL 2021 to 12 AUG 2021