

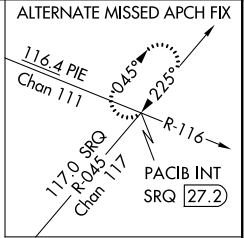
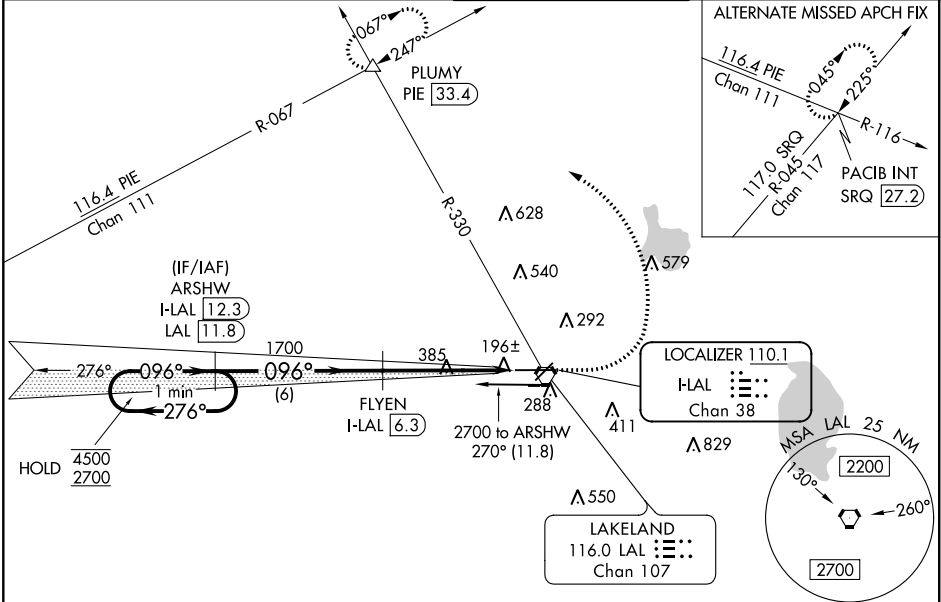
LOC/DME I-LAL 110.1 Chan 38	APP CRS 096°	Rwy Idg TDZE 132 Apt Elev 142
---	------------------------	---

ILS RWY 9 (SA CAT I & II)

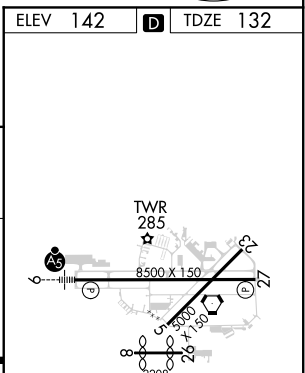
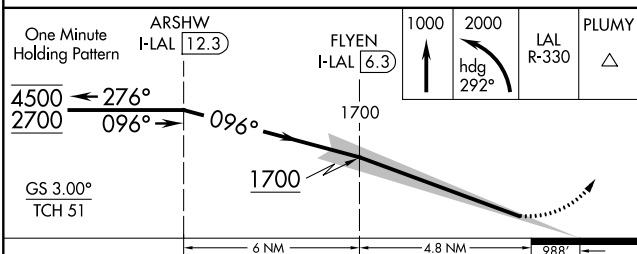
LAKELAND UNDER INTL (LAL)

DME required.	MALS R	MISSED APPROACH: Climb to 1000 then climbing left turn to 2000 on heading 292° and on LAL VORTAC R-330 to PLUMY INT/PIE 33.4 DME and hold.
<p>▼ SA CAT I: Requires specific OPSPEC, MSPEC or LOA approval and use of HUD to DH.</p> <p>▲ SA CAT II: Reduced lighting: Requires specific OPSPEC, MSPEC or LOA approval and use of HUD to touchdown. Autopilot coupled approach NA. SA CAT I/II: Procedure NA when tower closed.</p>		

ATIS 118.025	TAMPA APP CON 120.65 290.3	LAKELAND TOWER 124.5 (CTAF) 236.775	GND CON 121.4
------------------------	--------------------------------------	---	-------------------------



ELEV 142	TDZE 132
----------	----------



CATEGORY	A	B	C	D
S-ILS 9	SA CAT I	RA 152/14	150	DA 282
S-ILS 9	SA CAT II	RA 102/12	100	DA 232

SA CATEGORY I & II ILS SPECIAL AIRCREW & AIRCRAFT CERTIFICATION REQUIRED

HIRL Rwy 5-23 and 9-27

SE-3, 15 JUL 2021 to 12 AUG 2021

SE-3, 15 JUL 2021 to 12 AUG 2021