

WAAS CH 82605 W27A	APP CRS 276°	Rwy Idg TDZE 142 Apt Elev 142	8499
--	------------------------	---	-------------

RNAV (GPS) RWY 27

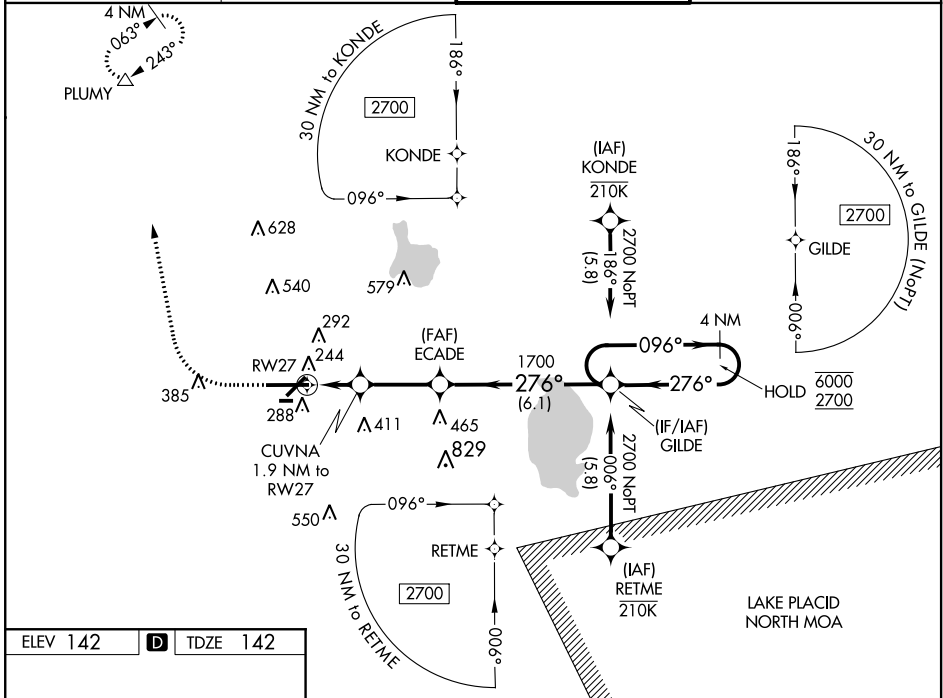
LAKELAND LINDER INTL (LAL)

RNP APCH-GPS.

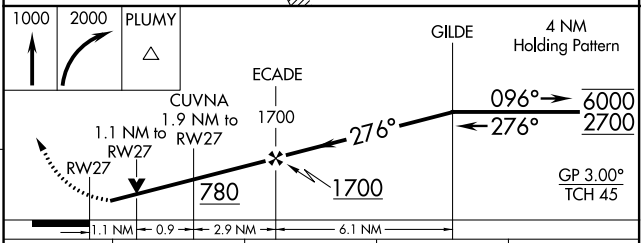
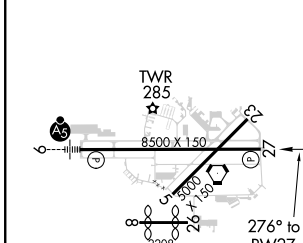
▼ Rwy 27 helicopter visibility reduction below $\frac{3}{4}$ SM NA. For uncompensated Baro-VNAV systems, LNAV/VNAV NA below -15°C or above 54°C. When local altimeter setting not received, use Plant City altimeter setting: increase LPV DA to 360 feet; increase LNAV/VNAV DA to 473 feet and visibility all Cats $\frac{1}{8}$ SM; increase all MDAs 20 feet and LNAV Cats C/D visibility $\frac{1}{8}$ SM. Baro-VNAV and VDP NA when using Plant City altimeter setting. Circling NA to Rwys 8 and 26.

MISSED APPROACH: Climb to 1000 then climbing right turn to 2000 direct PLUMY and hold.

ATIS 118.025	TAMPA APP CON 120.65 290.3	LAKELAND TOWER 124.5 (CTAF) 236.775	GND CON 121.4
------------------------	--------------------------------------	---	-------------------------



ELEV 142	D	TDZE 142
----------	----------	----------



CATEGORY	A	B	C	D
LPV DA		342- $\frac{3}{4}$	200 (200- $\frac{3}{4}$)	
LNAV/VNAV DA		455-1	313 (400-1)	
LNAV MDA	560-1	418 (500-1)	560-1 $\frac{1}{8}$	418 (500-1 $\frac{1}{8}$)
CIRCLING	600-1 458 (500-1)	660-1 518 (600-1)	720-1 $\frac{1}{2}$ 578 (600-1 $\frac{1}{2}$)	840-2 $\frac{1}{4}$ 698 (700-2 $\frac{1}{4}$)

SE-3, 15 JUL 2021 to 12 AUG 2021

SE-3, 15 JUL 2021 to 12 AUG 2021