

VORTAC LAL <b>116.0</b> Chan <b>107</b>	APP CRS <b>096°</b>	Rwy Idg <b>8414</b> TDZE <b>132</b> Apt Elev <b>142</b>
---	------------------------	---

# VOR RWY 9

LAKELAND LINDER INTL (LAL)

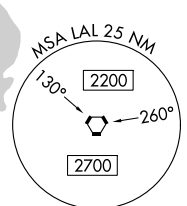
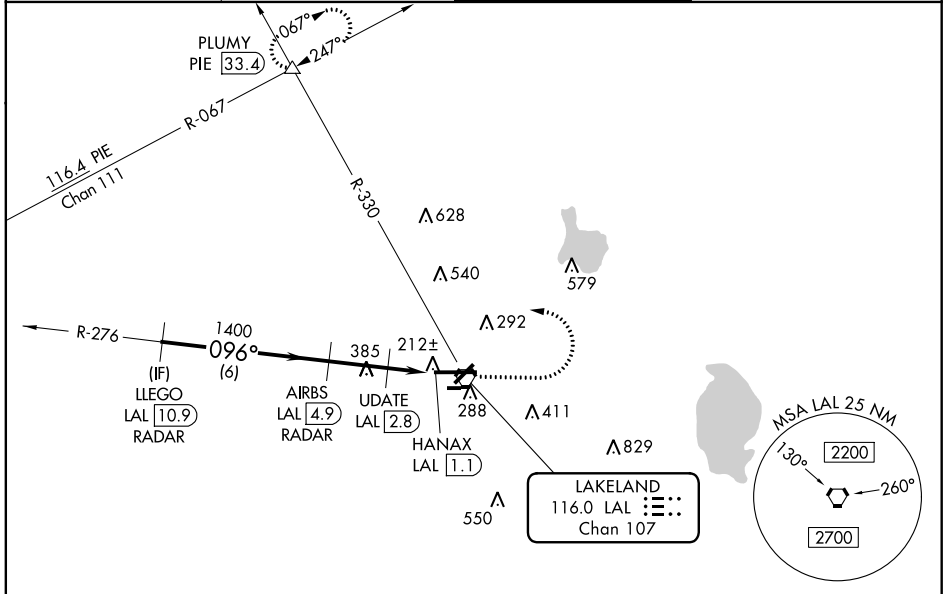
**RADAR required for procedure entry. DME or RADAR required.**

▼ When local altimeter setting not received, use Plant City altimeter setting and increase all MDAs 20 feet and Circling Cat C visibility to 1 3/4 SM. VDP NA when using Plant City altimeter setting. For inop ALS, increase S-9 Cat C/D visibility to 1 1/8 SM; increase UDATE Fix Minimums S-9 Cat C/D visibility to 1 3/4 SM. For inop ALS when using Plant City altimeter setting, increase UDATE Fix Minimums S-9 Cat C/D visibility to 1 1/8 SM. Circling NA to Rwy 8 and 26.



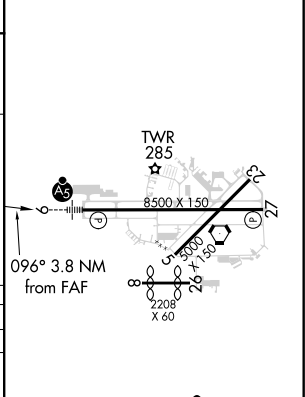
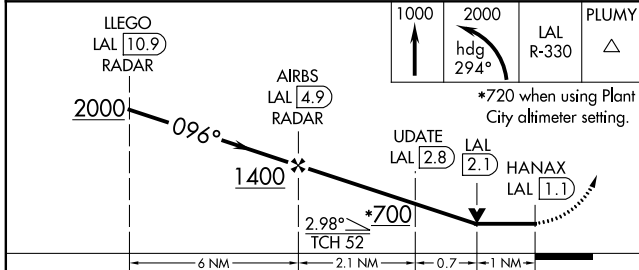
**MISSED APPROACH:** Climb to 1000 then climbing left turn to 2000 on heading 294° and on LAL VORTAC R-330 to PLUMY INT/PIE 33.4 DME and hold.

ATIS <b>118.025</b>	TAMPA APP CON <b>120.65 290.3</b>	LAKELAND TOWER <b>124.5 (CTAF) 0 236.775</b>	GND CON <b>121.4</b>
------------------------	--------------------------------------	---	-------------------------



1667  $\Delta$

ELEV 142	<b>D</b> TDZE 132
----------	-------------------



CATEGORY	A	B	C	D
S-9	700-1/2	568 (600-1/2)	700-1 1/4	568 (600-1 1/4)
CIRCLING	700-1	558 (600-1)	720-1 1/8 578 (600-1 1/8)	840-2 1/4 698 (700-2 1/4)
UPDATE FIX MINIMUMS				
S-9	500-1/2	368 (400-1/2)	500-3/4	368 (400-3/4)
CIRCLING	600-1 458 (500-1)	660-1 518 (600-1)	720-1 1/2 578 (600-1 1/2)	840-2 1/4 698 (700-2 1/4)

HIRL Rwy 5-23 and 9-27 <b>D</b>	FAF to MAP 3.8 NM
Knots	60 90 120 150 180
Min:Seq	3:48 2:32 1:54 1:31 1:16

SE-3, 15 JUL 2021 to 12 AUG 2021

SE-3, 15 JUL 2021 to 12 AUG 2021