

WAAS CH 45627 W16A	APP CRS 161°	Rwy Idg TDZE Apt Elev	5001 643 647
--	------------------------	-----------------------------	---

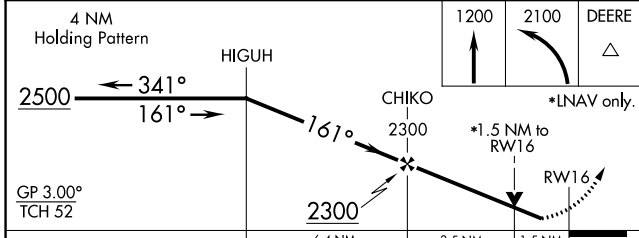
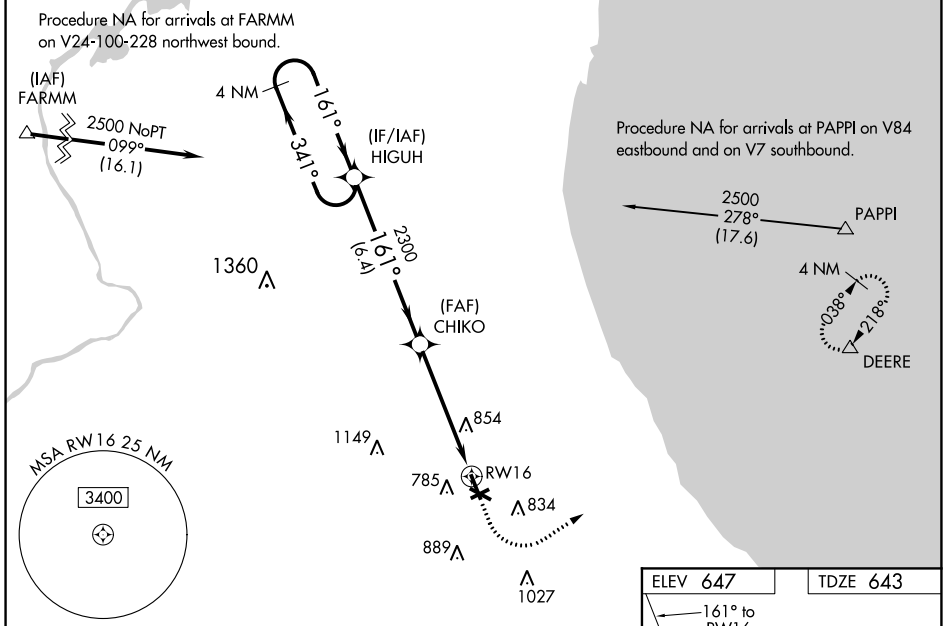
RNAV (GPS) RWY 16

CHICAGO EXEC (PWK)

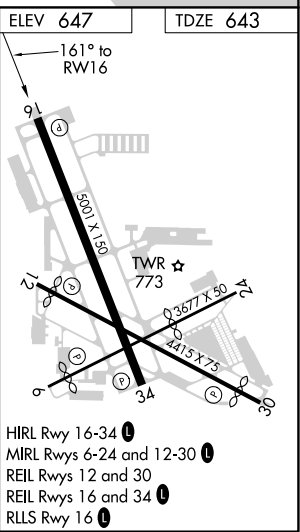
⚠ Circling to Rwy 6, 12, 24, 30 NA at night. For uncompensated Baro-VNAV systems, LNAV/VNAV NA below -16°C (4°F) or above 39°C (102°F). Rwy 16 helicopter visibility reduction below ¾ SM NA. DME/DME RNP-0.3 NA. When local altimeter setting not received use Chicago O'Hare Intl altimeter setting and increase LPV DA to 927 feet; increase LNAV/VNAV DA to 1110 feet; increase all MDAs 40 feet and LNAV visibility Cats C and D ½ SM. VDP and Baro-VNAV NA with Chicago O'Hare Intl altimeter setting.

MISSED APPROACH:
Climb to 1200 then climbing left turn to 2100 direct DEERE and hold.

ATIS 124.2	CHICAGO APP CON 120.55 306.925	EXECUTIVE TOWER * 119.9 (CTAF) 0	GND CON 121.7	CLNC DEL 124.7 (when tower closed)	UNICOM 122.95
----------------------	--	--	-------------------------	---	-------------------------



CATEGORY	A	B	C	D
LPV DA	905-1 262 (300-1)			
LNAV/VNAV DA	1088-1½ 445 (500-1½)			
LNAV MDA	1160-1	517 (600-1)	1160-1⅓	517 (600-1⅓)
CIRCLING	1160-1	513 (600-1)	1200-1½ 553 (600-1½)	1460-2¾ 813 (900-2¾)



EC-3, 15 JUL 2021 to 12 AUG 2021

EC-3, 15 JUL 2021 to 12 AUG 2021