

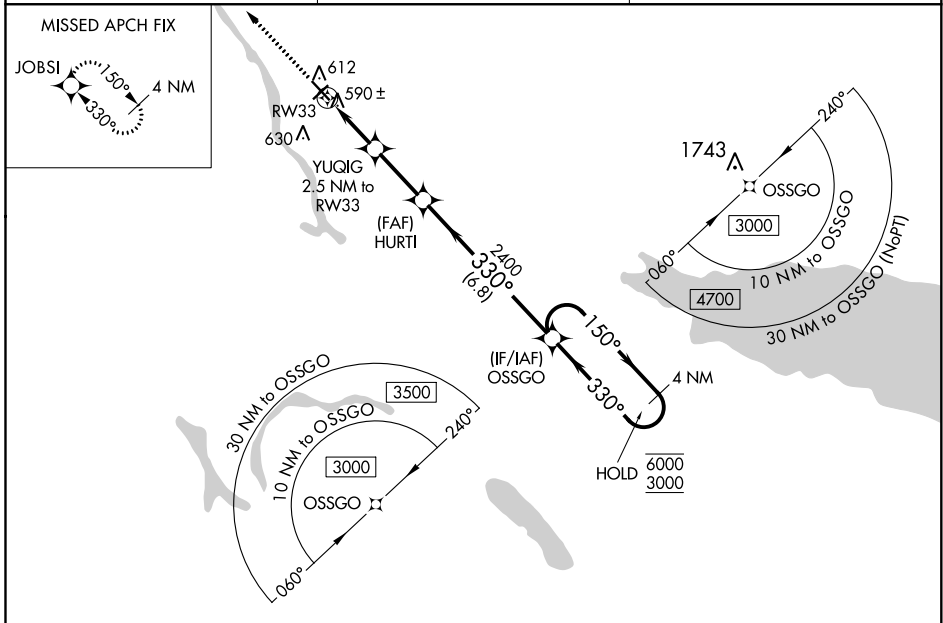
WAAS CH 82520 W33A	APP CRS 330°	Rwy Idg 4782 TDZE 471 Apt Elev 475
--	------------------------	---

RNAV (GPS) RWY 33

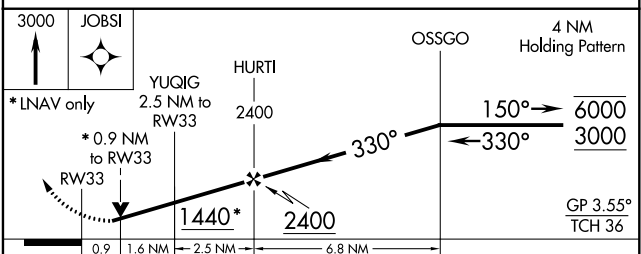
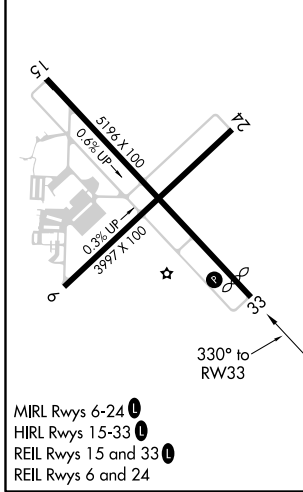
OSWEGO COUNTY (FZY)

RNP APCH.	MISSED APPROACH: Climb to 3000 direct JOBSI and hold.
Rwy 33 helicopter visibility reduction below 3/4 SM NA. For uncompensated Baro-VNAV systems, LNAV/VNAV NA below -22°C or above 54°C.	

ASOS 119.275	SYRACUSE APP CON 126.125 269.125	UNICOM 123.0 (CTAF)
------------------------	--	-------------------------------



ELEV 475	D	TDZE 471
----------	----------	----------



CATEGORY	A	B	C	D
LPV DA	810-1 339 (400-1)			NA
LNAV/VNAV DA	771-7/8 300 (300-7/8)			NA
LNAV MDA	840-1 369 (400-1)			NA
CIRCLING	920-1 445 (500-1)	940-1 465 (500-1)	960-1½ 485 (500-1½)	NA