

WAAS CH 72817 W13A	APP CRS 133°	Rwy Idg 6407 TDZE 67 Apt Elev 70
---------------------------------	------------------------	---

RNAV (GPS) RWY 13

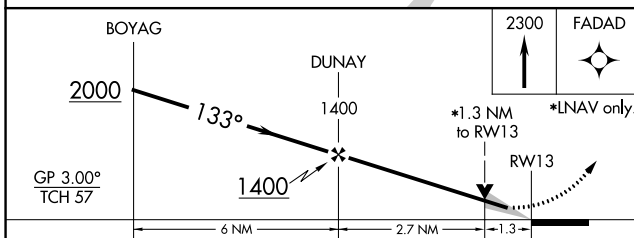
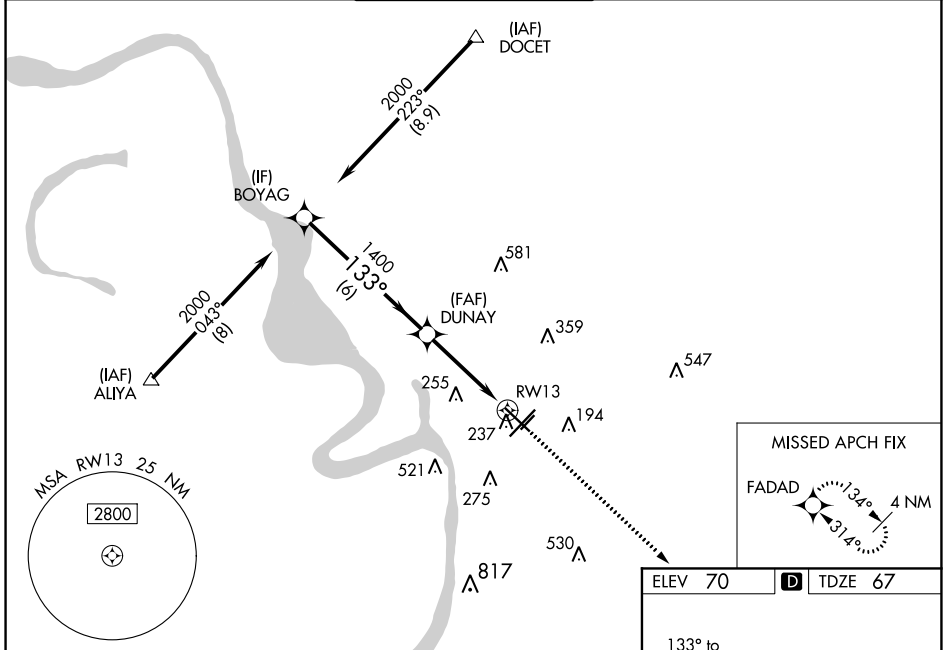
BATON ROUGE METRO, RYAN FLD (BTR)

⚠ For uncompensated Baro-VNAV systems, LNAV/VNAV NA below -5°C (23°F) or above 54°C (130°F). DME/DME RNP-0.3 NA. When local altimeter setting not received, use Hammond altimeter setting and increase all DA 91 feet and all MDA 100 feet, and increase LNAV/VNAV all Cats visibility ¼ mile, and LNAV Cats C and D visibility ⅓ mile. For inop MALSRL when using Hammond altimeter setting, increase LPV all Cats visibility to ⅓ mile, LNAV Cat C and D visibility to 1⅓ mile. Baro-VNAV and VDP NA when using Hammond altimeter setting.

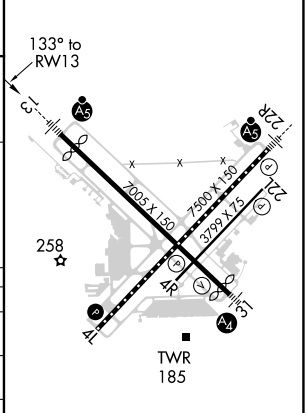


MISSED APPROACH: Climb to 2300 direct FADAD and hold.

ATIS 125.2	BATON ROUGE APP CON ★ 120.3 278.3	RYAN TOWER ★ 118.45 (CTAF) 257.8	GND CON 121.9	CLNC DEL 119.4	UNICOM 122.95
----------------------	---	--	-------------------------	--------------------------	-------------------------



ELEV 70	TDZE 67
---------	---------



CATEGORY	A	B	C	D
LPV DA		267-½	200 (200-½)	
LNAV/VNAV DA		465-⅞	398 (400-⅞)	
LNAV MDA	540-½	473 (500-½)	540-1	473 (500-1)
CIRCLING	560-1 490 (500-1)	660-1 590 (600-1)	780-2 710 (800-2)	840-2½ 770 (800-2½)

TDZ/CL Rwy 22R
HIRL Rwy 13-31 and 4L-22R
MIRL Rwy 4R-22L

SC-4, 09 SEP 2021 to 07 OCT 2021

SC-4, 09 SEP 2021 to 07 OCT 2021