

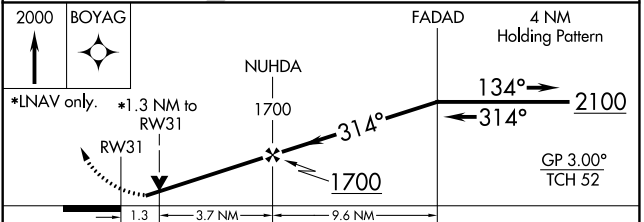
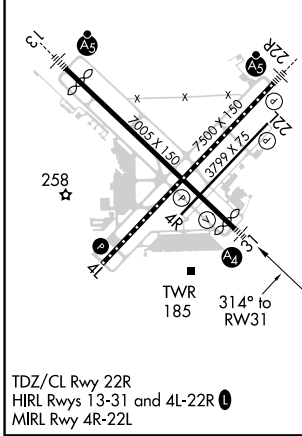
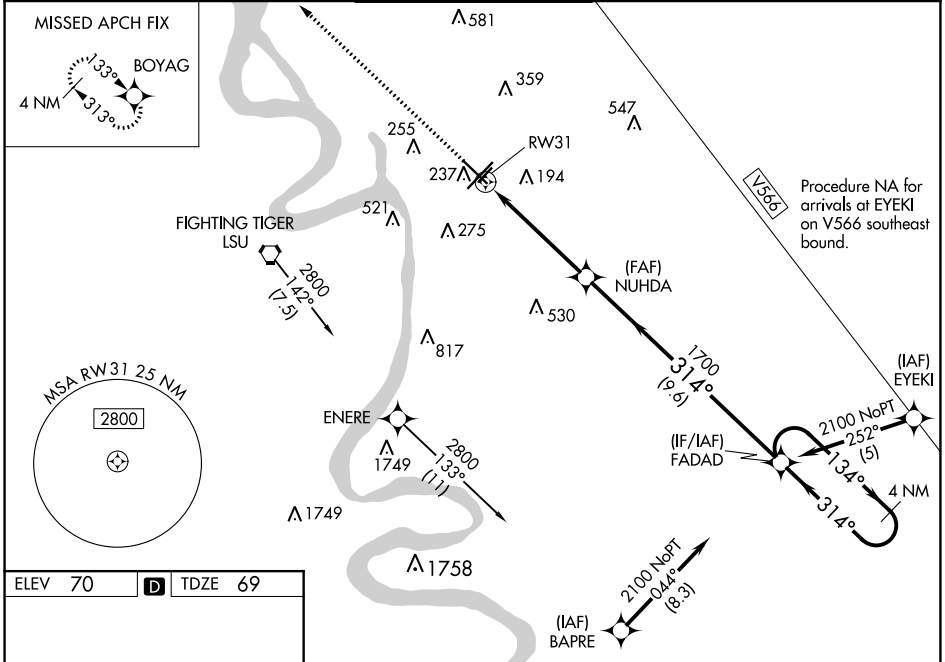
WAAS CH <b>90125</b> <b>W31A</b>	APP CRS <b>314°</b>	Rwy Idg <b>6094</b> TDZE <b>69</b> Apt Elev <b>70</b>
--	------------------------	---

# RNAV (GPS) RWY 31

BATON ROUGE METRO, RYAN FLD (BTR)

RNP APCH.		<p>For uncompensated Baro-VNAV systems, LNAV/VNAV NA below -5°C (23°F) or above 54°C (130°F). For inop MALS, increase LNAV Cat C/D visibility to 1½ mile. When local altimeter setting not received, use Hammond altimeter setting and increase all DA 91 feet and MDA 100 feet, increase LPV and LNAV/VNAV all Cats visibility ⅓ mile, LNAV Cats C and D visibility ⅔ mile, and Circling Cat C and D visibility ¼ mile. Baro-VNAV and VDP NA when using Hammond altimeter setting. Rwy 31 helicopter visibility reduction below ¾ SM NA.</p>	<p>MALS</p>	<p>MISSED APPROACH: Climb to 2000 direct BOYAG and hold.</p>

ATIS <b>125.2</b>	BATON ROUGE APP CON ★ <b>120.3 278.3</b>	RYAN TOWER ★ <b>118.45 (CTAF) 257.8</b>	GND CON <b>121.9</b>	CLNC DEL <b>119.4</b>	UNICOM <b>122.95</b>
----------------------	---	--	-------------------------	--------------------------	-------------------------



CATEGORY	A	B	C	D
LPV DA		366-¾	297 (300-¾)	
LNAV/VNAV DA		446-¾	377 (400-¾)	
LNAV MDA	520-¾ 451 (500-¾)		520-1 451 (500-1)	
CIRCLING	560-1 490 (500-1)	660-1 590 (600-1)	780-2 710 (800-2)	840-2½ 770 (800-2½)

SC-4, 09 SEP 2021 to 07 OCT 2021

SC-4, 09 SEP 2021 to 07 OCT 2021