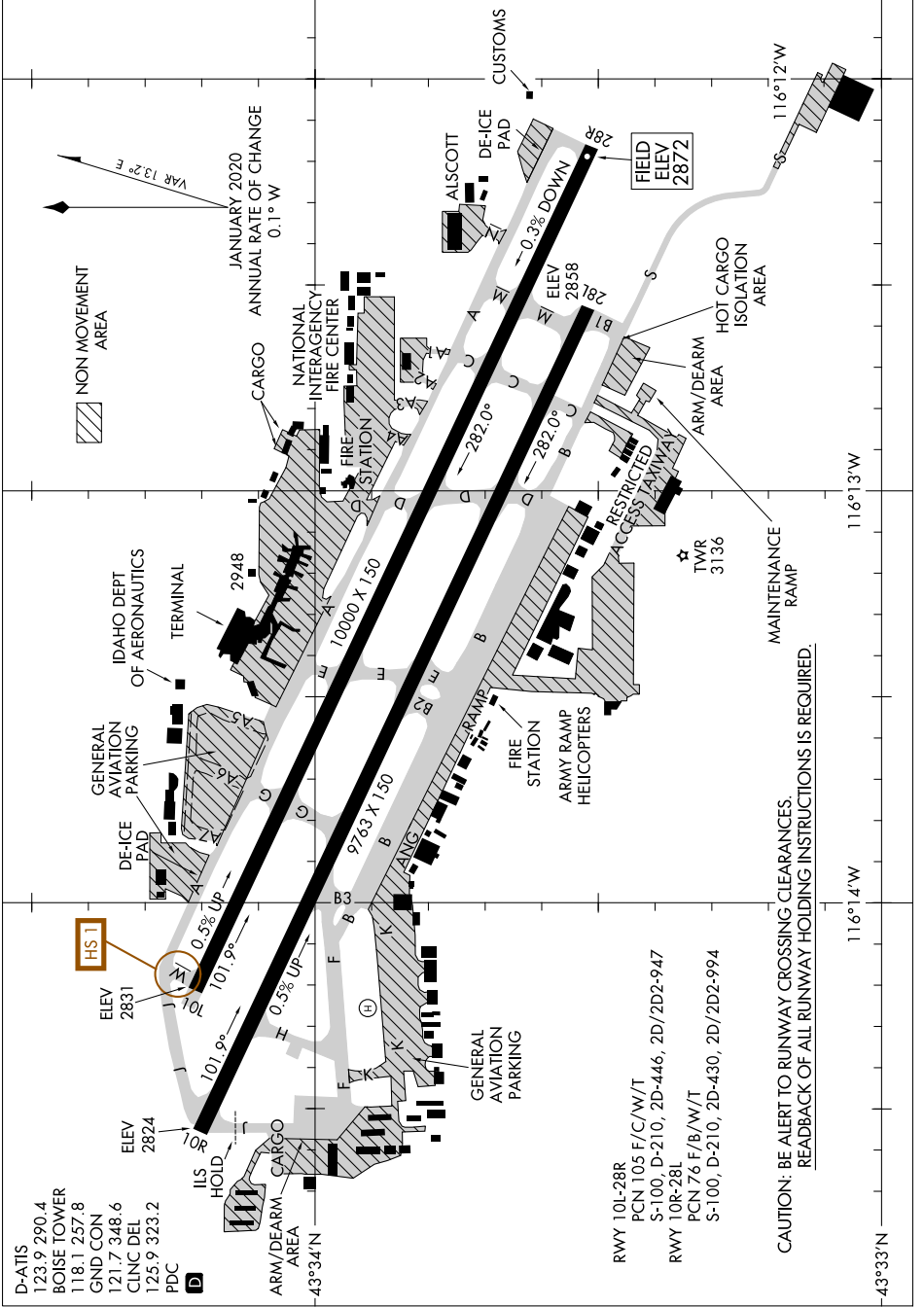


21112
AIRPORT DIAGRAM

AL-57 (FAA) **BOISE AIR TRML/GOWEN FLD (BOI)**
 BOISE, IDAHO

NW-1, 09 SEP 2021 to 07 OCT 2021



NW-1, 09 SEP 2021 to 07 OCT 2021

AIRPORT DIAGRAM
 21112

BOISE, IDAHO
BOISE AIR TRML/GOWEN FLD (BOI)

CAUTION: BE ALERT TO RUNWAY CROSSING CLEARANCES
 READBACK OF ALL RUNWAY HOLDING INSTRUCTIONS IS REQUIRED.

- D-ATIS 123.9 290.4
- BOISE TOWER 118.1 257.8
- GND CON 121.7 348.6
- CLNC DEL 125.9 323.2
- PDC
- ARM/DEARM AREA
- ILS HOID
- ELEV 2824
- ELEV 2831
- DE-ICE PAD
- GENERAL AVIATION PARKING
- TERMINAL
- IDAHO DEPT OF AERONAUTICS
- 2948
- CARGO
- NATIONAL INTERAGENCY FIRE CENTER
- FIRE STATION
- 10000 X 150
- ALSCOTT
- DE-ICE PAD
- CUSTOMS
- 28R
- ELEV 2858
- 0.3% DOWN
- FIELD ELEV 2872
- 116°12'W
- HOT CARGO ISOLATION AREA
- ARM/DEARM AREA
- RESTRICTED ACCESS RAMPWAY
- MAINTENANCE RAMP
- TWR 3136
- 116°13'W
- 116°14'W
- 43°33'N
- RWY 10L-28R
- PCN 105 F/C/W/T
- S-100, D-210, 2D-446, 2D/2D2-947
- RWY 10R-28L
- PCN 76 F/B/W/T
- S-100, D-210, 2D-430, 2D/2D2-994