

BOISE, IDAHO

HI-ILS Z or LOC Z RWY 10R

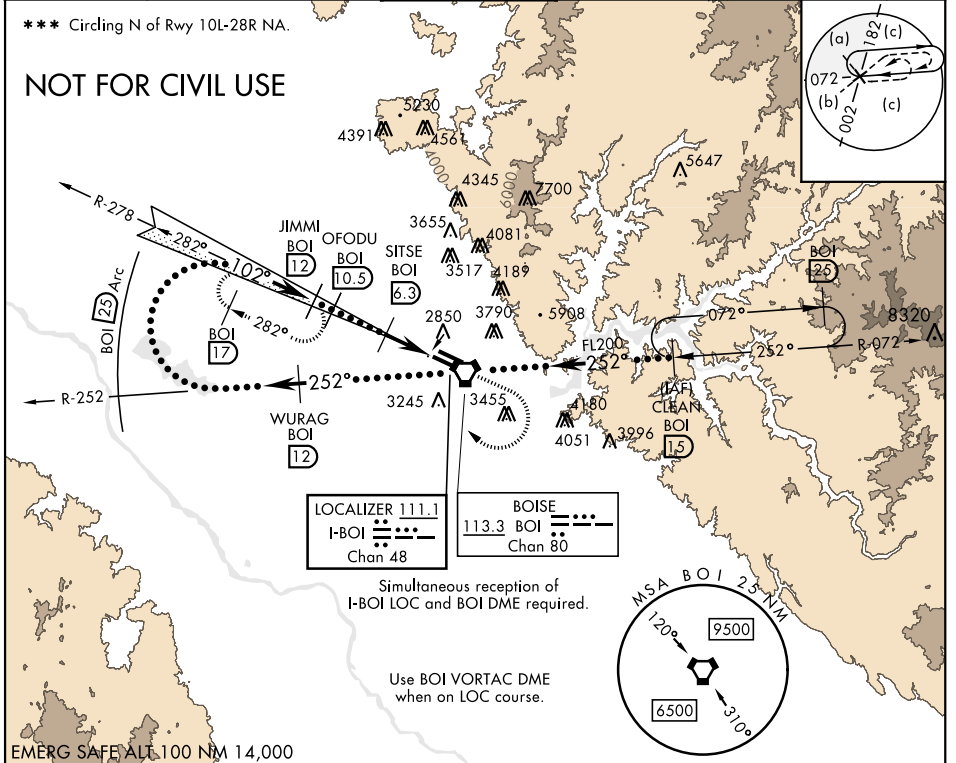
LOC I-BOI 111.1	APCH CRS 102°	Rwy Ldg TDZE Arprt Elev 9763 2836 2872	AL-57 [USAF]	BOISE AIR TERMINAL (GOWEN FLD)	(KBOI)
---------------------------	-------------------------	--	--------------	--------------------------------	--------

DME required.	ALSF-2	MISSED APPROACH: Climb to 3700 then climbing right turn to 5000 on heading 320° and BOI VORTAC R-278 to JIMMI BOI 12 DME and hold.
---------------	--------	--

ATIS 123.9 290.4	BIG SKY APP CON 119.6 269.4	BOISE TOWER 118.1 257.8	GND CON 121.7 348.6	CLNC DEL 125.9 323.2	ASOS
----------------------------	---------------------------------------	-----------------------------------	-------------------------------	--------------------------------	------

*** Circling N of Rwy 10L-28R NA.

NOT FOR CIVIL USE



NW-1, 09 SEP 2021 to 07 OCT 2021

NW-1, 09 SEP 2021 to 07 OCT 2021

EMERG SAFE ALT 100 NM 14,000

3700	5000	JIMMI BOI 12	WURAG BOI R-252 12	VGSI and ILS glidepath not coincident (VGSI angle 3.00/55)	CLEAN R-072 BOI 15	ELEV 2872	TDZE 2836
↑	hdg 320°						
Right at 12,000 remain within 25 NM of BOI VORTAC		VORTAC		VORTAC		102° 3.9 NM from FAF	
GS 3.00° TCH 58		3.6 NM		0.3		0.4% UP	
CATEGORY	C		D		E		
S-ILS 10R *	3036/18		200 (200-1/2)				
S-LOC 10R **	3180/30		344 (400-3/8)				
CIRCLING ***	3740-2 1/2 869 (900-2 1/2)		3820-3 949 (1000-3)				TDZL/CL Rwy 10R-28L HIRL Rwy 10L-28R, 10R-28L REIL Rwy 10L

BOISE, IDAHO

43°34'N-116°13'W

BOISE AIR TERMINAL (GOWEN FLD) (KBOI)

Amtd 4 29MAR18

HI-ILS Z or LOC Z RWY 10R