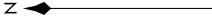
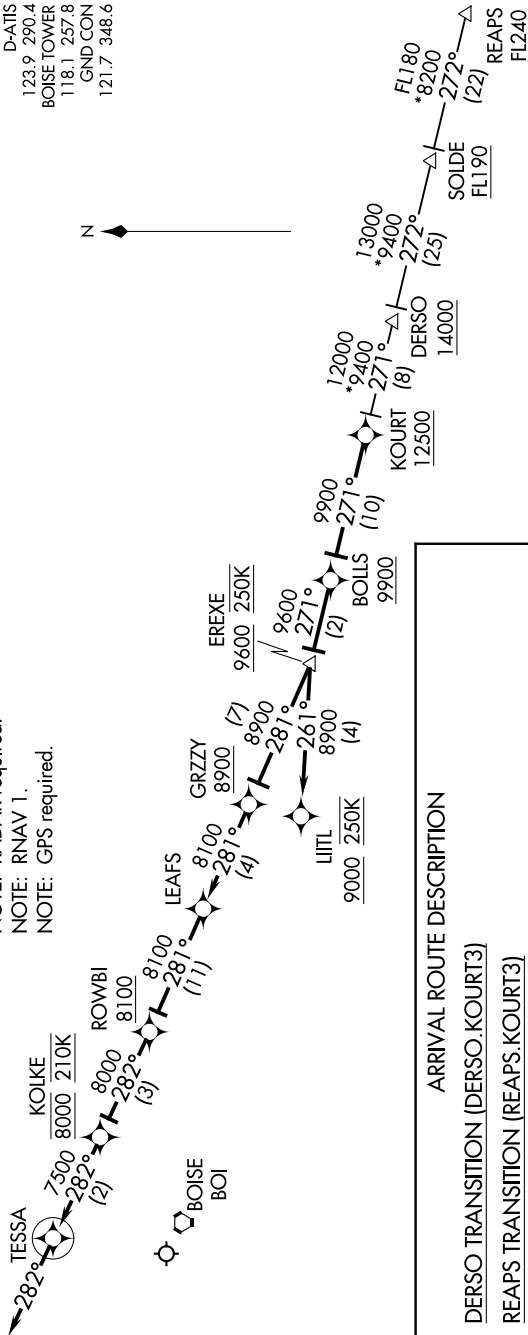


NW-1, 09 SEP 2021 to 07 OCT 2021

BIG SKY APP CON  
119.6 289.4 (SOUTH)  
126.9 351.85 (NORTH)  
D-ATIS  
123.9 290.4  
BOISE TOWER  
118.1 257.8  
GND CON  
121.7 348.6



NOTE: RADAR required.  
NOTE: RNAV 1.  
NOTE: GPS required.



**ARRIVAL ROUTE DESCRIPTION**

**DERSO TRANSITION (DERSO.KOURT3)**

**REAPS TRANSITION (REAPS.KOURT3)**

From KOURT on track 271° to cross BOLLS at/above 9900, then on track 271° to cross EREXE at/above 9600 and at 250K.

LANDING RUNWAYS 10L/R: From EREXE on track 281° to cross GRZZY at/above 8900, then on track 281° to LEAFS, then on track 281° to cross ROWBI at/above 8100, then on track 282° to cross KOLKE at 8000 and at 210K, then on track 282° to TESSA, then on track 282°. Expect assigned approach or RADAR vectors to final approach course.

LANDING RUNWAYS 28L/R: From EREXE on track 261° to cross LITL at/above 9000 and at 250K. Expect assigned approach or RADAR vectors to final approach course.

NOTE: Chart not to scale.