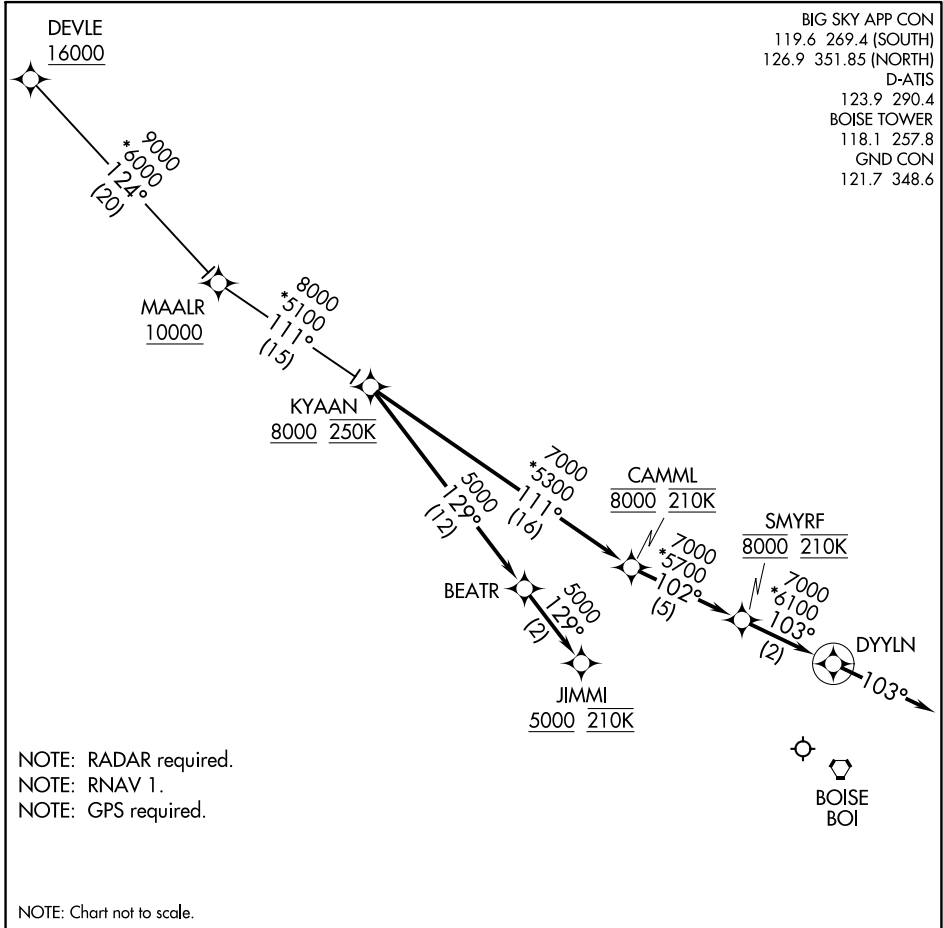


BIG SKY APP CON
119.6 269.4 (SOUTH)
126.9 351.85 (NORTH)
D-ATIS
123.9 290.4
BOISE TOWER
118.1 257.8
GND CON
121.7 348.6



NW-1, 09 SEP 2021 to 07 OCT 2021

NW-1, 09 SEP 2021 to 07 OCT 2021

ARRIVAL ROUTE DESCRIPTION

DEVLE TRANSITION (DEVLE.KYAAN3)

LANDING RUNWAYS 10L/R: From KYAAN on track 129° to BEATR, then on track 129° to cross JIMMI at or above 5000 and at 210K. Expect assigned approach or RADAR vectors to final approach course.

LANDING RUNWAYS 28L/R: From KYAAN on track 111° to cross CAMML at 8000 and at 210K, then on track 102° to cross SMYRF at 8000 and at 210K, then on track 103° to DYYLN, then on track 103°. Expect assigned approach or RADAR vectors to final approach course.