

APP CRS 282°	Rwy Idg 10000 TDZE 2871 Apt Elev 2871
------------------------	--

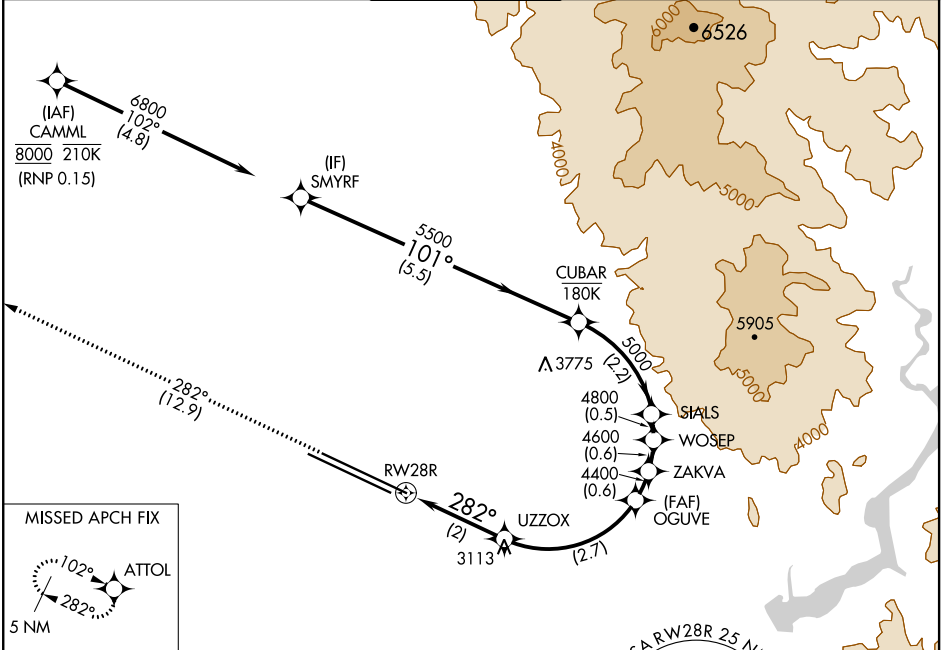
RNAV (RNP) X RWY 28R

BOISE AIR TRML/GOWEN FLD (BOI)

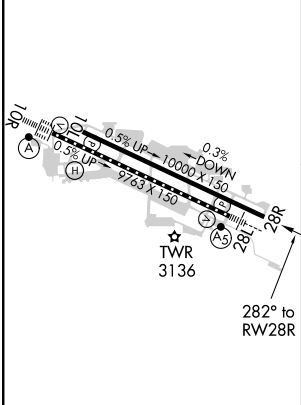
NA For uncompensated Baro-VNAV systems, procedure NA below -14°C (7°F) or above 52°C (126°F). RF required. GPS required.

MISSED APPROACH: Climb to 6000 on track 282° to ATTOL and hold.

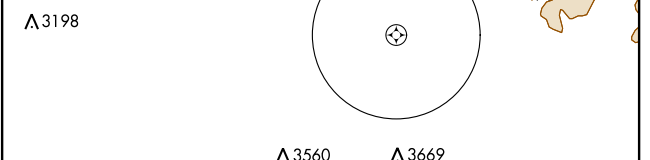
D-ATIS 123.9 290.4	BIG SKY APP CON 119.6 269.4	BOISE TOWER 118.1 257.8	GND CON 121.7 348.6	CLNC DEL 125.9 323.2
------------------------------	---------------------------------------	-----------------------------------	-------------------------------	--------------------------------



ELEV 2871	D	TDZE 2871
------------------	----------	------------------



REIL Rwy 10L
TDZ/CL Rwy 10R and 28L
HIRL Rwy 10L-28R and 10R-28L



6000	ATTOL	VGSI and RNAV glidepath not coincident (VGSI Angle 3.00/TCH 70).				SMYRF
tr 282°		OGUVE	ZAKVA	WOSEP	SIALS	CUBAR
		3548	4400	4600	4800	5000
			4400			5500
						6800
						GP 3.00°
						TCH 55
		2 NM	2.7 NM	0.6 NM	0.6 NM	0.5 NM
						2.2 NM
						5.5 NM

CATEGORY	A	B	C	D
RNP 0.15 DA	3288-1 $\frac{3}{8}$		417 (500-1 $\frac{3}{8}$)	

AUTHORIZATION REQUIRED