

APP CRS	Rwy Idg	<b>10000</b>
<b>102°</b>	TDZE	<b>2844</b>
	Apt Elev	<b>2872</b>

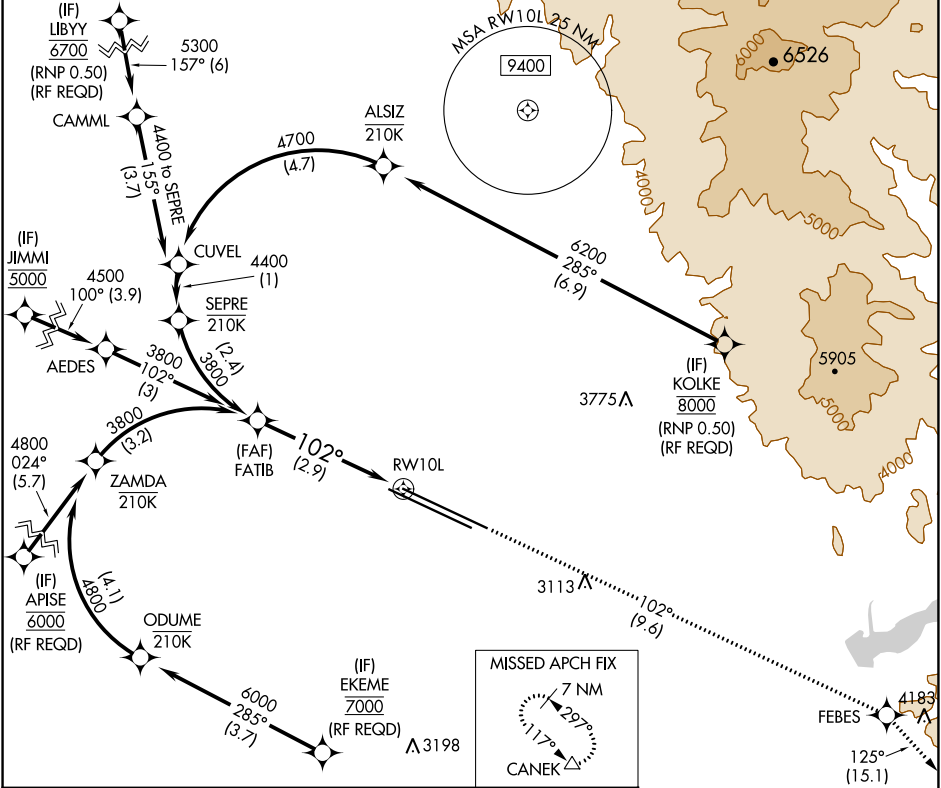
# RNAV (RNP) Z RWY 10L

BOISE AIR TRML/GOWEN FLD (BOI)

RNP AR APCH.  
 ▼ For uncompensated Baro-VNAV systems, procedure NA below -1.4°C or above 54°C.

MISSED APPROACH: Climb to 7300 on track 102° to FEBES and on track 125° to CANEK and hold.

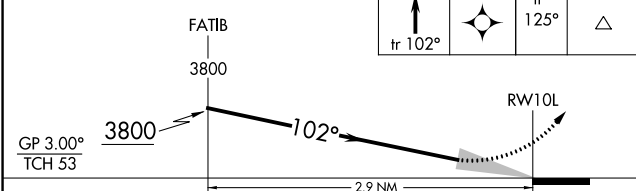
D-ATIS	BIG SKY APP CON	BOISE TOWER	GND CON	CLNC DEL
<b>123.9 290.4</b>	<b>119.6 269.4</b>	<b>118.1 257.8</b>	<b>121.7 348.6</b>	<b>125.9 323.2</b>



NW-1, 09 SEP 2021 to 07 OCT 2021

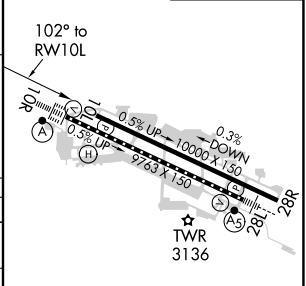
NW-1, 09 SEP 2021 to 07 OCT 2021

See planview for multiple IF locations.



CATEGORY	A	B	C	D
RNP 0.15 DA		3167-1 $\frac{1}{8}$	323 (300-1 $\frac{1}{8}$ )	
RNP 0.30 DA		3219-1 $\frac{1}{4}$	375 (400-1 $\frac{1}{4}$ )	

ELEV 2872 **D** TDZE 2844



**AUTHORIZATION REQUIRED**

REIL Rwy 10L  
 TDZ/CL Rwy 10R and 28L  
 HIRL Rwy 10L-28R and 10R-28L