

APP CRS	Rwy Idg	9763
102°	TDZE	2836
	Apt Elev	2871

RNAV (RNP) Z RWY 10R

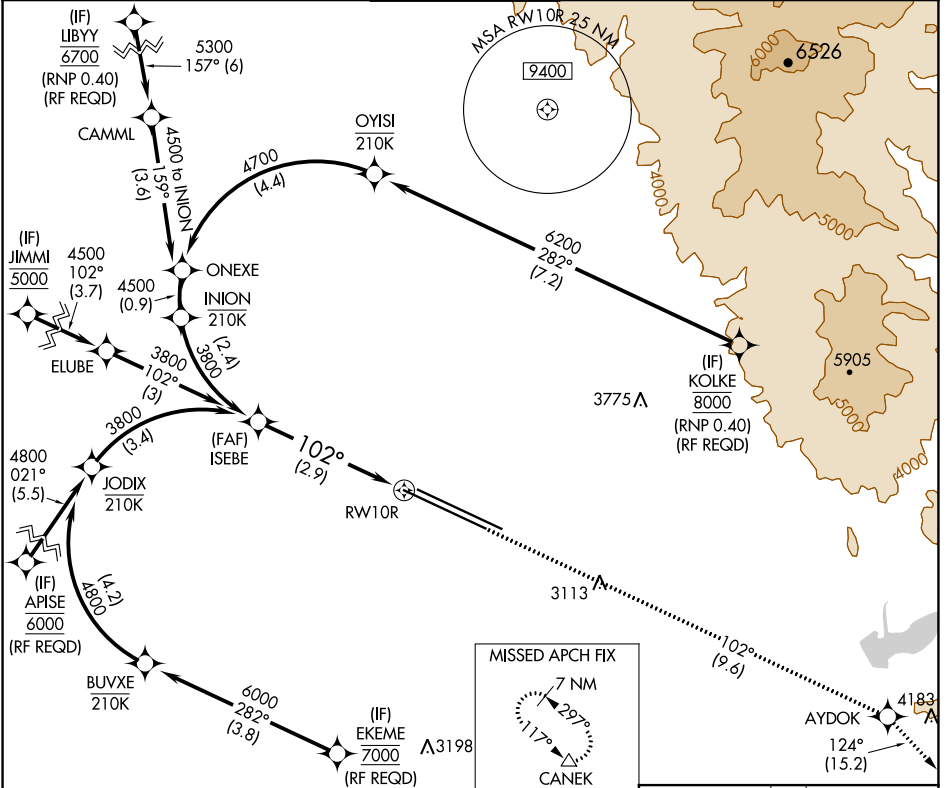
BOISE AIR TRML/GOWEN FLD (BOI)

For uncompensated Baro-VNAV systems, procedure NA below -14°C (7°F) or above 51°C (124°F). GPS required.

ALSF-2

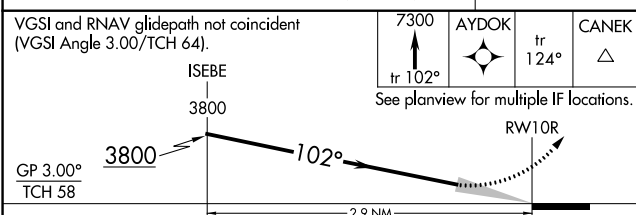
MISSED APPROACH: Climb to 7300 on track 102° to AYDOK and on track 124° to CANEK and hold.

D-ATIS 123.9 290.4	BIG SKY APP CON 119.6 269.4	BOISE TOWER 118.1 257.8	GND CON 121.7 348.6	CLNC DEL 125.9 323.2
------------------------------	---------------------------------------	-----------------------------------	-------------------------------	--------------------------------



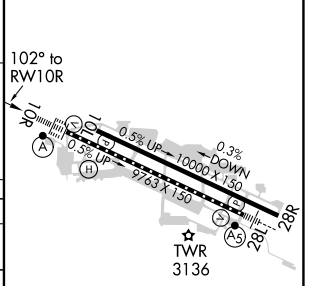
NW-1, 09 SEP 2021 to 07 OCT 2021

NW-1, 09 SEP 2021 to 07 OCT 2021



ELEV 2871	D	TDZE 2836
-----------	---	-----------

CATEGORY	A	B	C	D
RNP 0.15 DA		3163/30	327 (300-¾)	
RNP 0.30 DA		3199/40	363 (400-¾)	



REIL Rwy 10L
TDZ/CL Rws 10R and 28L
HIRL Rws 10L-28R and 10R-28L

AUTHORIZATION REQUIRED