


WAAS CH <b>77702</b> <b>W28A</b>	APP CRS <b>282°</b>	Rwy Idg TDZE Apt Elev	<b>9763</b> <b>2858</b> <b>2871</b>
--	------------------------	-----------------------------	---

# RNAV (GPS) Y RWY 28L

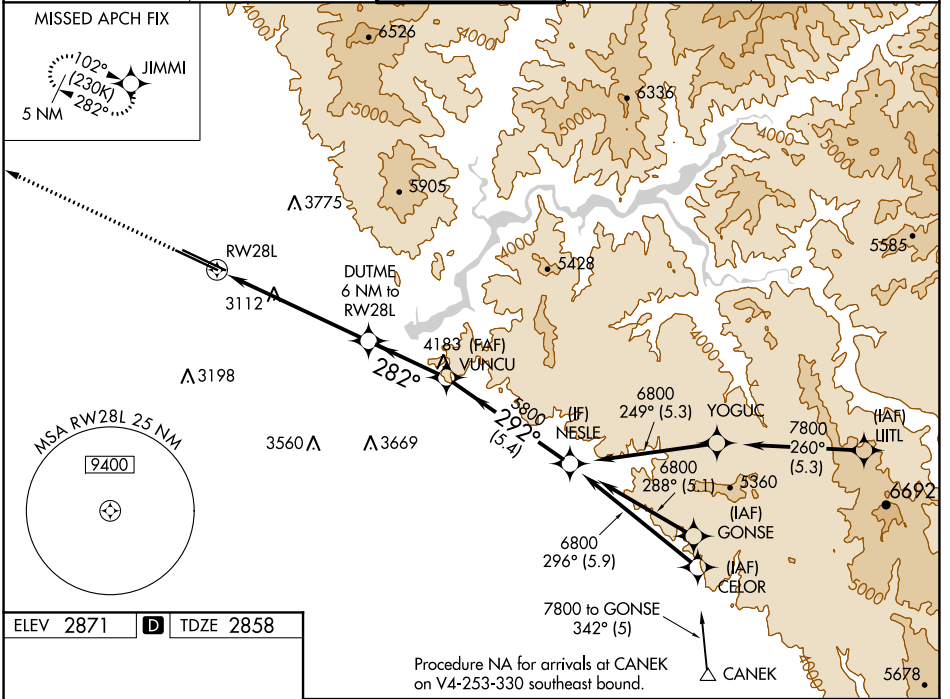
BOISE AIR TRML/GOWEN FLD (BOI)

**⚠** For uncompensated Baro-VNAV systems, LNAV/VNAV NA below -12°C (11°F) or above 52°C (126°F). Circling NA north of Rwy 10L-28R. DME/DME RNP-0.3 NA. For inop ALS, increase LPV all Cats visibility to RVR 5000, LNAV/VNAV Cat E visibility to 1 3/8 SM, and LNAV Cat C/D/E visibility to 1 3/4 SM.

**MALS** 

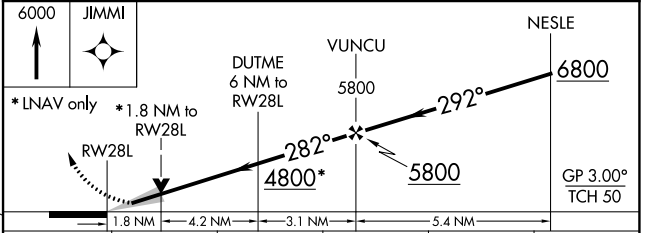
**MISSED APPROACH:** Climb to 6000 direct JIMMI and hold, continue climb-in-hold to 6000.

D-ATIS <b>123.9 290.4</b>	BIG SKY APP CON <b>119.6 269.4</b>	<b>BOISE TOWER</b> <b>118.1 257.8</b>	GND CON <b>121.7 348.6</b>	CLNC DEL <b>125.9 323.2</b>
------------------------------	---------------------------------------	--	-------------------------------	--------------------------------



ELEV 2871 **D** TDZE 2858

REIL Rwy 10L  
TDZ/CL Rws 10R and 28L  
HIRL Rws 10L-28R and 10R-28L



CATEGORY	A	B	C	D	E
LPV DA		3183/30	325 (400-3/8)		
LNAV/VNAV DA		3274/45	416 (500-7/8)		
LNAV MDA	3480/24	622 (700-1/2)	3480-1 3/8	622 (700-1 3/8)	
<b>C</b> CIRCLING	3480-1	609 (700-1)	3740-2 1/2 869 (900-2 1/2)	3820-3 949 (1000-3)	3880-3 1009 (1100-3)

NW-1, 09 SEP 2021 to 07 OCT 2021

NW-1, 09 SEP 2021 to 07 OCT 2021