

(PELYT.SADYL4) 21112

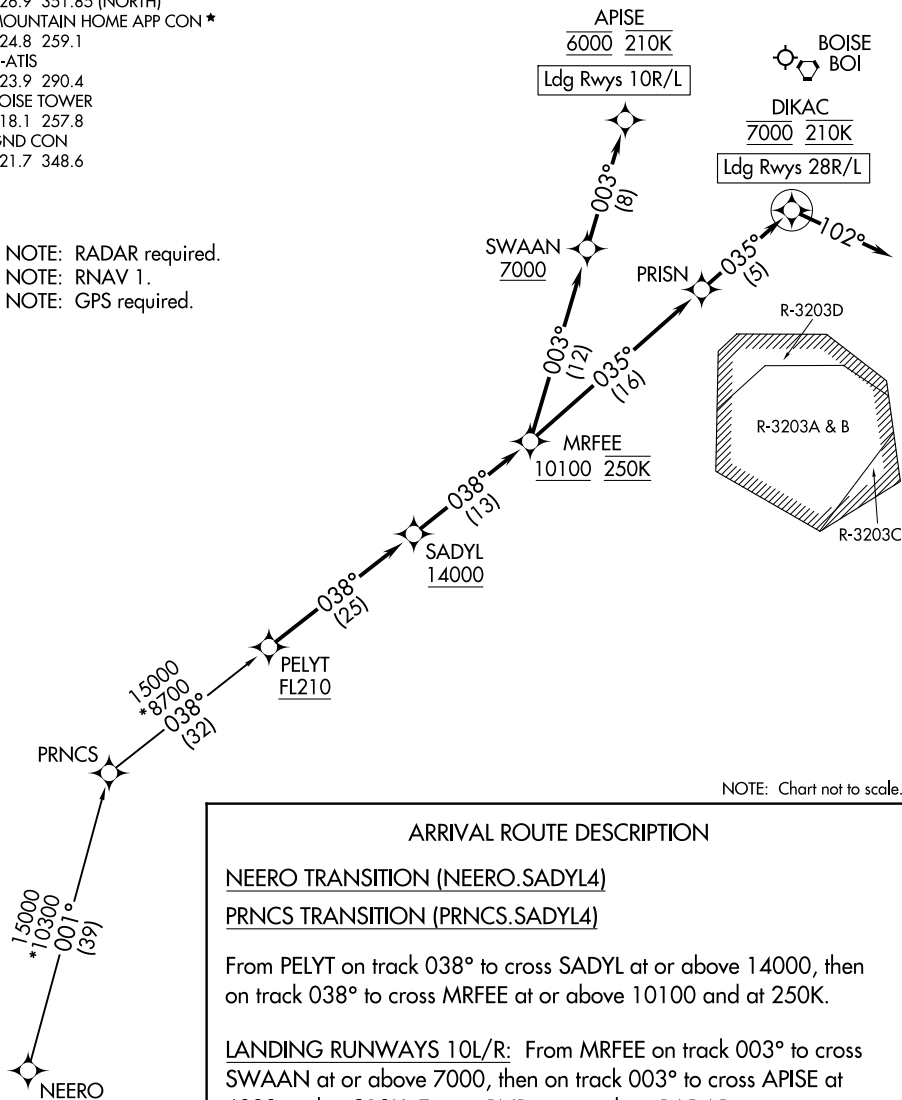
SADYL FOUR ARRIVAL (RNAV)

AL-57 (FAA)

BOISE AIR TRML/GOWEN FLD (BOI)
BOISE, IDAHO

BIG SKY APP CON
 119.6 269.4 (SOUTH)
 126.9 351.85 (NORTH)
 MOUNTAIN HOME APP CON ★
 124.8 259.1
 D-ATIS
 123.9 290.4
 BOISE TOWER
 118.1 257.8
 GND CON
 121.7 348.6

NOTE: RADAR required.
 NOTE: RNAV 1.
 NOTE: GPS required.



NOTE: Chart not to scale.

ARRIVAL ROUTE DESCRIPTION

NEERO TRANSITION (NEERO.SADYL4)

PRNCS TRANSITION (PRNCS.SADYL4)

From PELYT on track 038° to cross SADYL at or above 14000, then on track 038° to cross MRFREE at or above 10100 and at 250K.

LANDING RUNWAYS 10L/R: From MRFREE on track 003° to cross SWAAN at or above 7000, then on track 003° to cross APISE at 6000 and at 210K. Expect RNP approach or RADAR vectors to final approach course.

LANDING RUNWAYS 28L/R: From MRFREE on track 035° to PRISN, then on track 035° to cross DIKAC at 7000 and at 210K, then on heading 102° or as assigned by ATC. Expect RNP approach or RADAR vectors to final approach course.

SADYL FOUR ARRIVAL (RNAV)

(PELYT.SADYL4) 10SEP20

BOISE, IDAHO
BOISE AIR TRML/GOWEN FLD (BOI)

NW-1, 09 SEP 2021 to 07 OCT 2021

NW-1, 09 SEP 2021 to 07 OCT 2021