

VORTAC BOI 113.3 Chan 80	APP CRS 101°	Rwy Idg TDZE 2844 Apt Elev 2872
--	------------------------	--

VOR or TACAN RWY 10L

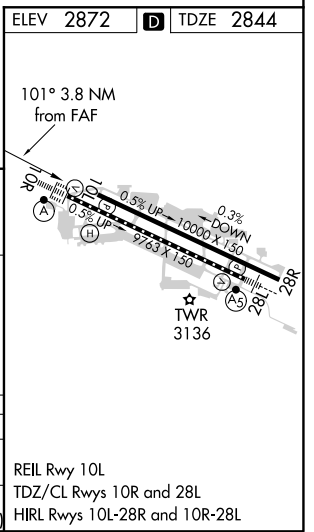
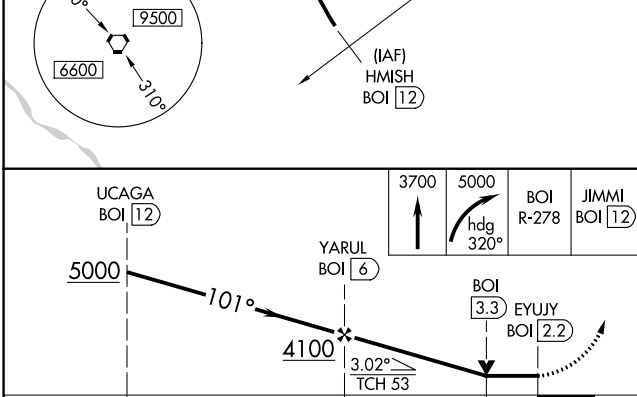
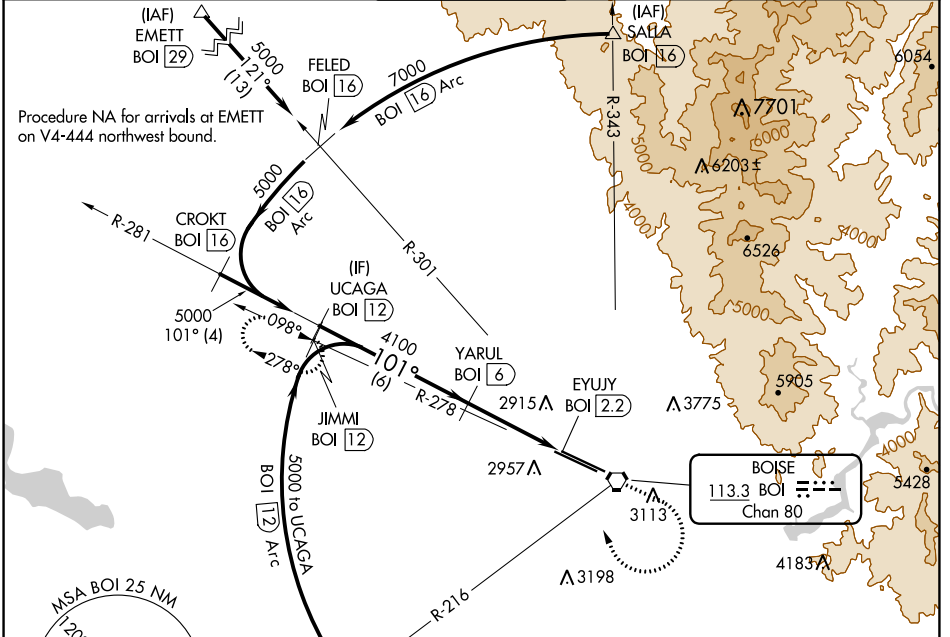
BOISE AIR TRML/GOWEN FLD (BOI)

DME required.

Procedure NA north of Rwy 10L-28R.

MISSED APPROACH: Climb to 3700 then climbing right turn to 5000 on heading 320° and BOI VORTAC R-278 to JIMMI/12 DME and hold.

D-ATIS 123.9 290.4	BIG SKY APP CON 119.6 269.4	BOISE TOWER 118.1 257.8	GND CON 121.7 348.6	CLNC DEL 125.9 323.2
------------------------------	---------------------------------------	--	-------------------------------	--------------------------------



NW-1, 09 SEP 2021 to 07 OCT 2021

NW-1, 09 SEP 2021 to 07 OCT 2021