

BOISE, IDAHO

AL-57 (FAA)

21112

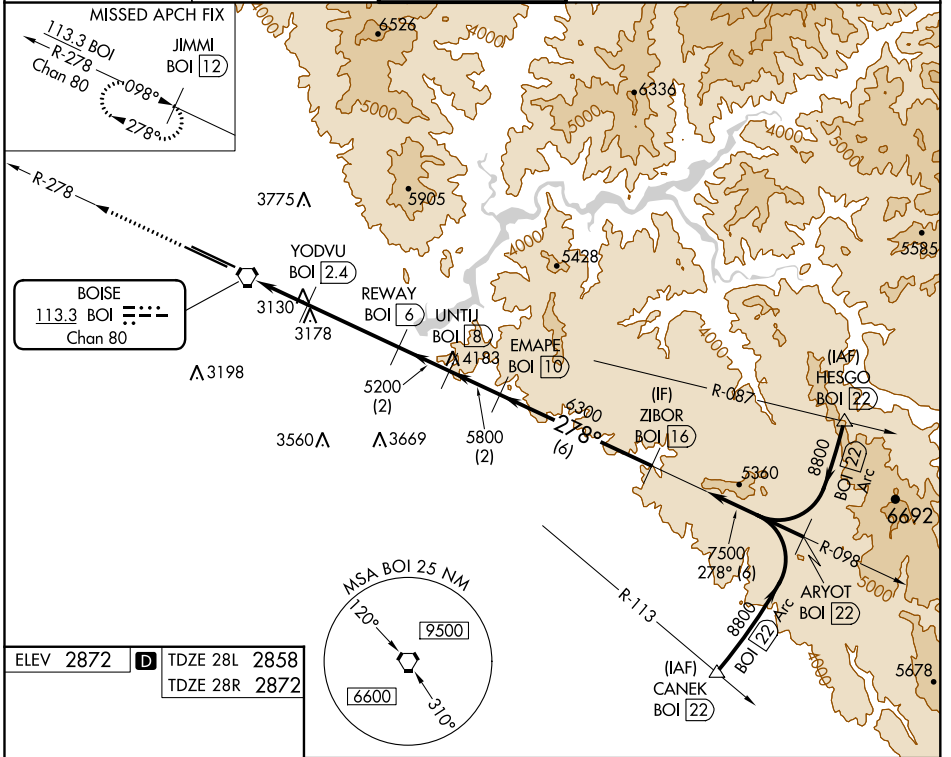
VORTAC BOI <b>113.3</b> Chan 80	APP CRS <b>278°</b>	Rwy Idg	28L	28R
		TDZE	<b>9763</b>	<b>10000</b>
			<b>2858</b>	<b>2872</b>
		Apt Elev	<b>2872</b>	<b>2872</b>

# VOR or TACAN RWY 28L

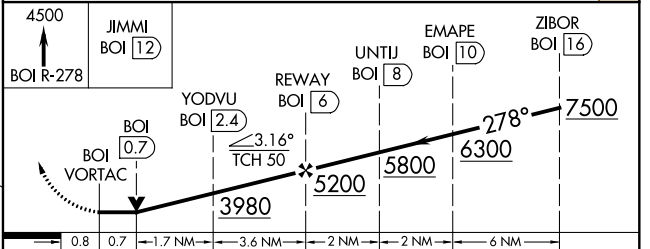
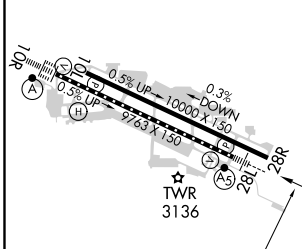
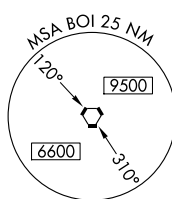
BOISE AIR TRML/GOWEN FLD (BOI)

DME required.	MALSR Rwy 28L	MISSED APPROACH: Climb to 4500 on BOI VORTAC R-278 to JIMMI/12 DME and hold.
Circling NA north of Rwy 10L-28R. For inop ALS increase S-28L Cat E visibility to 1½ SM.		

D-ATIS <b>123.9 290.4</b>	BIG SKY APP CON <b>119.6 269.4</b>	BOISE TOWER <b>118.1 257.8</b>	GND CON <b>121.7 348.6</b>	CLNC DEL <b>125.9 323.2</b>
------------------------------	---------------------------------------	-----------------------------------	-------------------------------	--------------------------------



ELEV 2872	<b>D</b> TDZE 28L 2858
	TDZE 28R 2872



	A	B	C	D	E
S-28L	3380/24	522 (600-½)	3380/55	522 (600-1)	
SIDESTEP RWY 28R	3380-1⅜	508 (600-1⅜)	3380-1⅞	3380-2½ 508 (600-2½)	
<b>C</b> CIRCLING	3440-1	568 (600-1)	3740-2½	3820-3	3880-3
			868 (900-2½)	948 (1000-3)	1008 (1100-3)

REIL Rwy 10L  
TDZ/CL Rwys 10R and 28L  
HIRL Rwys 10L-28R and 10R-28L

BOISE, IDAHO  
Amdt 2A 22APR21  
43°34'N-116°13'W

# VOR or TACAN RWY 28L

NW-1, 09 SEP 2021 to 07 OCT 2021

NW-1, 09 SEP 2021 to 07 OCT 2021