

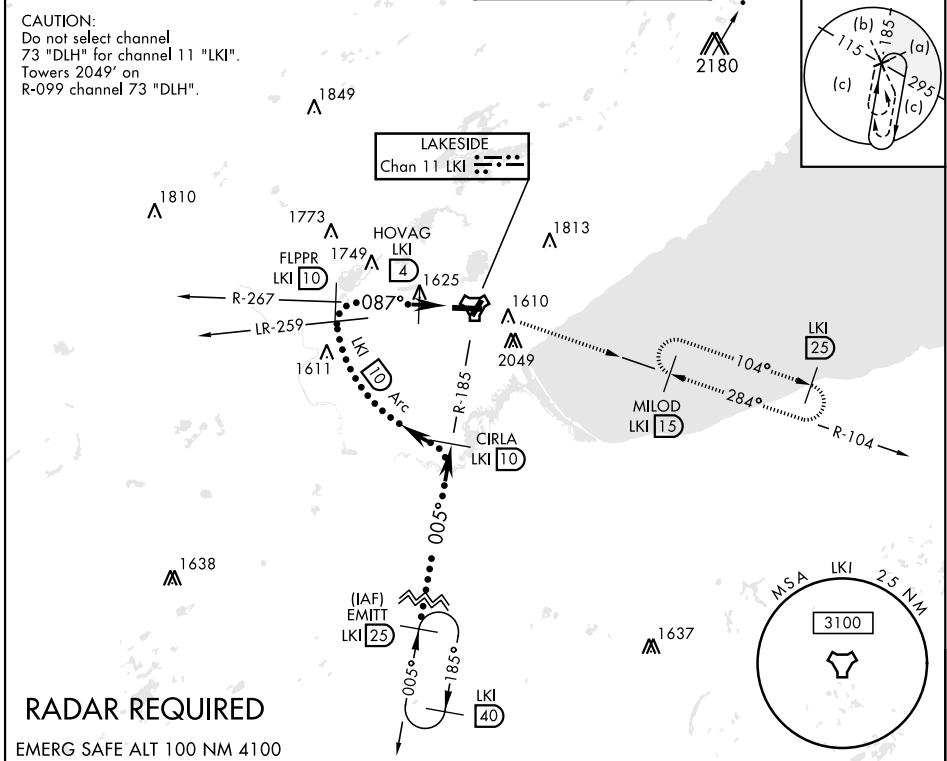
TACAN LKI Chan 11	APCH CRS 087°	Rwy ldg 10,062 THRE 1428 Arprt Elev 1428	JAL-125 [USAF]	DULUTH INTL (KDLH)
-------------------	---------------	--	----------------	--------------------

▼ * When ALS inop, increase CAT E vis to 1 3/8 miles.
 ** Circling NA for CAT E SE of Rwy 3 and 27.



MISSED APPROACH: Climb to 2500 then climbing right turn to 4000 via LKI TACAN R-104 to MILOD (1.5 DME) and hold.

ATIS 124.1 270.1	DULUTH APP CON 125.45 233.7	DULUTH TOWER 118.3 257.8	GND CON 121.9 348.6
------------------	-----------------------------	--------------------------	---------------------



RADAR REQUIRED
EMERG SAFE ALT 100 NM 4100

	2500	4000	MILOD LKI 15	ELEV 1428	THRE 1428
		LKI R-104		Rwy 9 ldg 10,062'	Rwy 27 ldg 10,062'
	EMITT R-185 LKI 25	CIRLA R-185 LKI 10	FLPPR R-267 LKI 10	HOVAG LKI 4	IWYYES LKI 2
	FL180	4000	4000	087°	TACAN
	3.00° TCH 50	Arc LKI 10	2300	2.0 NM	
CATEGORY	C	D	E		
S-9*	1880/45	452	(500-1)		
CIRCLING**	1920-1 1/2 492 (500-1 1/2)	1980-2 552 (600-2)	2060-2 1/4 632 (700-2 1/4)	TDZL/CL Rwy 9-27 REIL Rwy 3 and 21 HIRL Rwy 3-21 and 9-27	

NC-1, 09 SEP 2021 to 07 OCT 2021

NC-1, 09 SEP 2021 to 07 OCT 2021