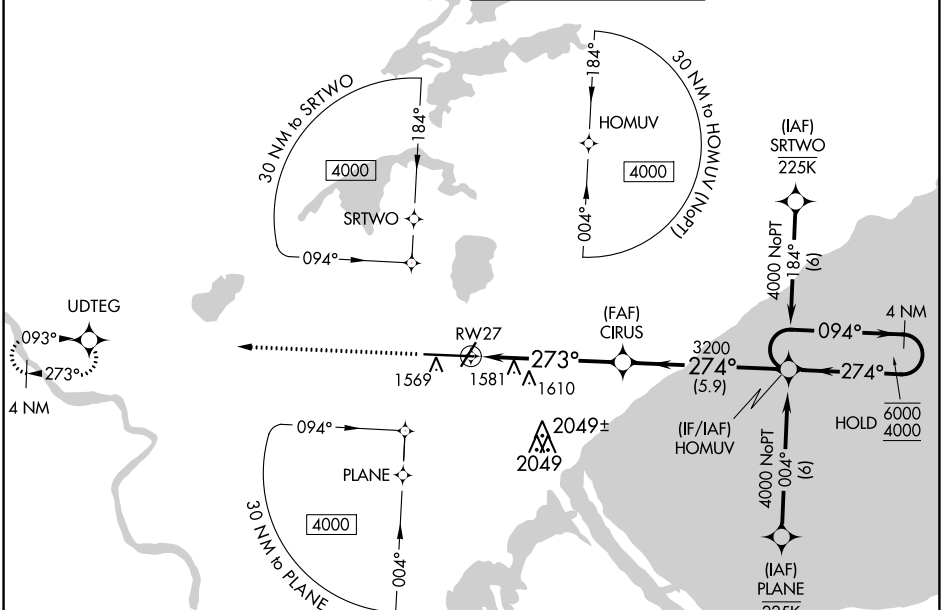


WAAS CH 50502 W27A	APP CRS 273°	Rwy ldg 10062 TDZE 1421 Apt Elev 1428
--	------------------------	--

RNAV (GPS) RWY 27

DULUTH INTL (DLH)

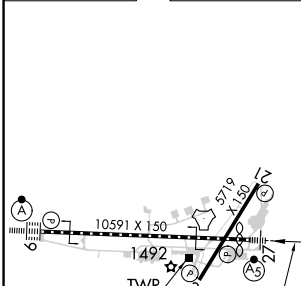
RNP APCH.		MALSR	MISSED APPROACH: Climb to 3300 direct UDTEG and hold.
<p>▼ For uncompensated Baro-VNAV systems, LNAV/VNAV NA below -21°C or above 54°C.</p> <p>▲ #RVR 1800 authorized with use of FD or AP or HUD to DA.</p>			
ATIS 124.1 270.1	DULUTH APP CON 125.45 233.7	DULUTH TOWER 118.3 257.8	GND CON 121.9 348.6



NC-1, 09 SEP 2021 to 07 OCT 2021

NC-1, 09 SEP 2021 to 07 OCT 2021

ELEV 1428	D TDZE 1421
-----------	--------------------



3300 UDTEG	VGSi and RNAV glidepath not coincident (VGSi Angle 3.00/TCH 91).	
* LNAV only	CIRUS 3200	HOMUV 4 NM Holding Pattern
	* 1.1 NM to RWY 27	094° → 6000 / 4000
		← 274°
		GP 3.00° TCH 50

CATEGORY	A	B	C	D
LPV DA#	1621/24		200 (200-½)	
LNAV/VNAV DA	1871/45		450 (500-¾)	
LNAV MDA	1860/24 439 (500-½)		1860/40 439 (500-¾)	
C CIRCLING	1880-1 452 (500-1)	1900-1 472 (500-1)	1940-1½ 512 (600-1½)	2400-3 972 (1000-3)

TDZ/CL Rwy 9
REIL Rwy 3 and 21
HIRL Rwy 3-21 and 9-27