

TACAN LKI Chan 11	APCH CRS 087°	Rwy ldg 10,062 THRE 1428 Arprt Elev 1428
----------------------	------------------	--

AL-125 [USAF]

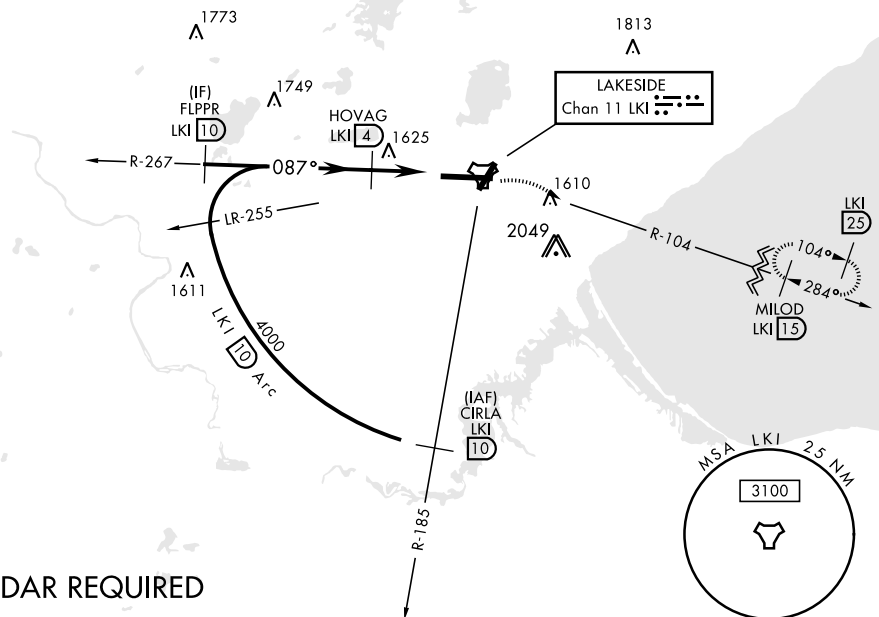
DULUTH INTL (KDLH)

ALSF-2

MISSED APPROACH: Climb to 2500 then climbing right turn to 4000 via LKI R-104 to MILOD (15 DME) and hold.

ATIS 124.1 270.1	DULUTH APP CON 125.45 233.7	DULUTH TOWER 118.3 257.8	GND CON 121.9 348.6
----------------------------	---------------------------------------	------------------------------------	-------------------------------

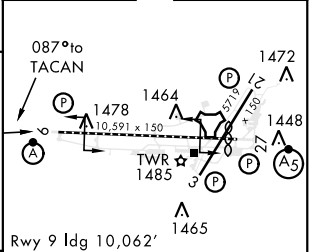
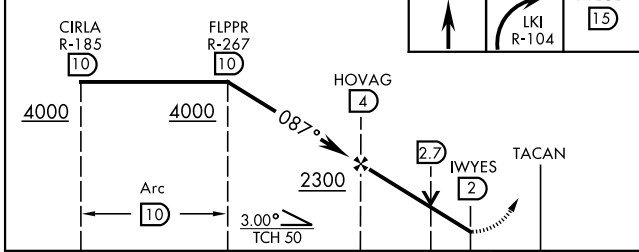
CAUTION:
 Do not select channel 73 "DLH" for channel 11 "LKI".
 Towers 2049' on R-099 channel 73 "DLH".



RADAR REQUIRED

EMERG SAFE ALT 100 NM 4100

2500	4000	MILOD	ELEV 1428	THRE 1428
------	------	-------	-----------	-----------



CATEGORY	A	B	C	D	E
S-9 *	1880/24 452 (500-½)		1880/45	452 (500-1)	
CIRCLING **	1920-1 492 (500-1)		1920-1½ 492 (500-½)	1980-2 552 (600-2)	2060-2¼ 632 (700-2¼)

TDZL/CL Rwy 9-27
 REIL Rwy 3 and 21
 HIRL Rwy 3-21 and 9-27

NC-1, 09 SEP 2021 to 07 OCT 2021

NC-1, 09 SEP 2021 to 07 OCT 2021