

LOC/DME I-ABU <b>111.75</b> Chan 54 (Y)	APP CRS <b>273°</b>	Rwy Idg <b>7500</b> TDZE <b>664</b> Apt Elev <b>680</b>
---	------------------------	---

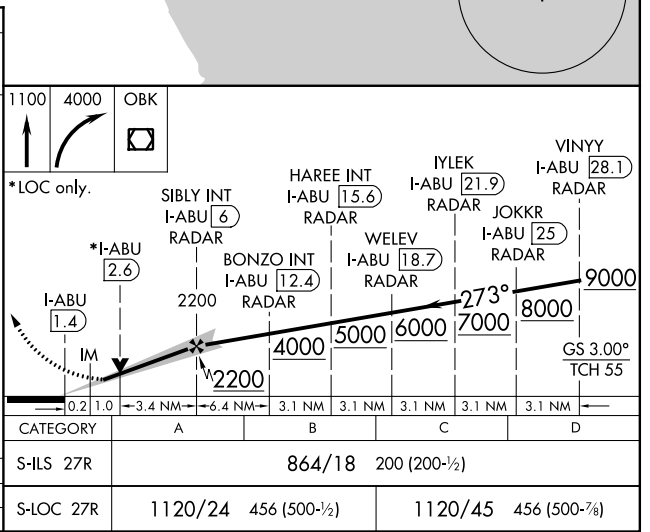
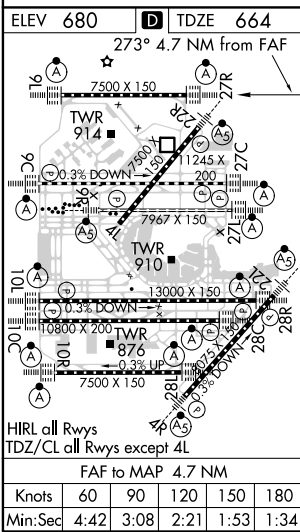
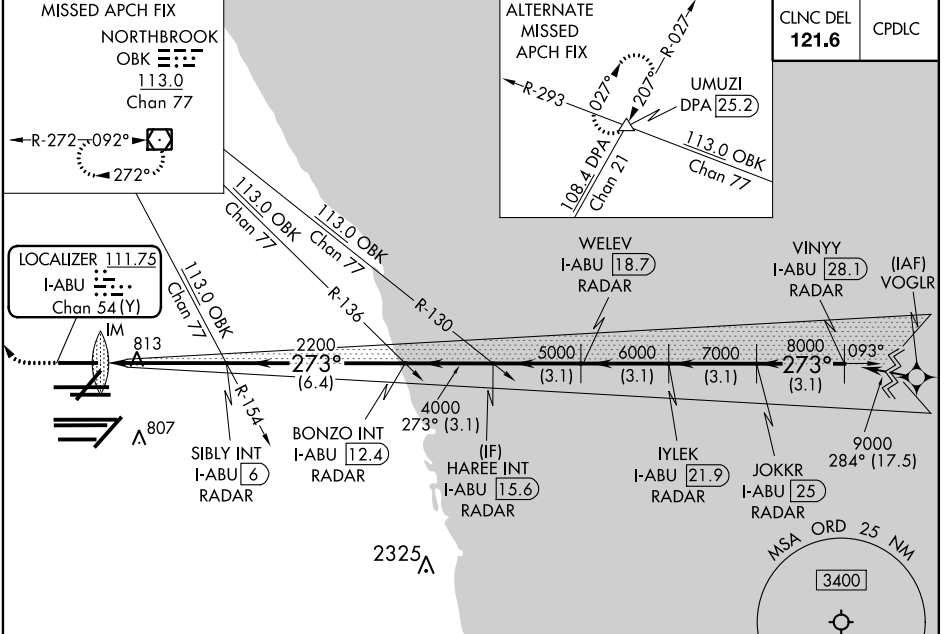
# ILS or LOC RWY 27R

CHICAGO O'HARE INTL (ORD)

RNAV-1 GPS or RADAR required for procedure entry. RADAR or DME required. **ALSF-2** MISSED APPROACH: Climb to 1100 then climbing right turn to 4000 direct OBK VOR/DME and hold, continue climb-in-hold to 4000.

Simultaneous approach authorized.

D-ATIS <b>135.4</b>	CHICAGO APP CON <b>119.0 292.125</b>	O'HARE TOWERS <b>128.15 348.0</b> (Rwy 9L/27R) <b>133.0 348.0</b> (10R/28L) <b>120.75 121.15 126.9 132.7 348.0</b> (CENTER)	GND CON (TWR NORTH) <b>124.125</b> (TWR SOUTH) <b>118.05</b> (ALL TWRs) <b>226.675</b>	(TWR CENTER) <b>121.75</b> (CBND) (IBND) <b>121.9</b>
------------------------	---	--	---	--



EC-3, 09 SEP 2021 to 07 OCT 2021

EC-3, 09 SEP 2021 to 07 OCT 2021