

CHICAGO, ILLINOIS

AL-166 (FAA)

21224

ILS PRM RWY 28C

(CLOSE PARALLEL)

CHICAGO O'HARE INTL (ORD)

LOC/DME I-VZE 108.95	APP CRS 273°	Rwy Idg 10800
Chan 26 (Y)		TDZE 651
		Apt Elev 680

Aircraft not GPS equipped - RADAR required for procedure entry.
DME or RADAR required.
From VOGLR: RNAV 1-GPS required.

ALSF-2

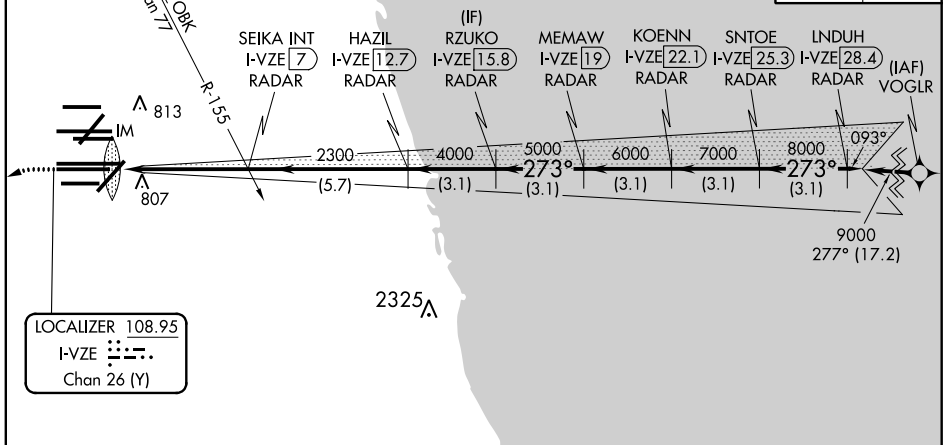
MISSED APPROACH: Climb to 1100 then climbing left turn to 4000 on heading 215° and DPA VOR/DME R-082 to DPA VOR/DME and hold.

Simultaneous approach authorized. Use of FD or AP required during simultaneous operations. Dual VHF comm required. See additional requirements on AAUP.

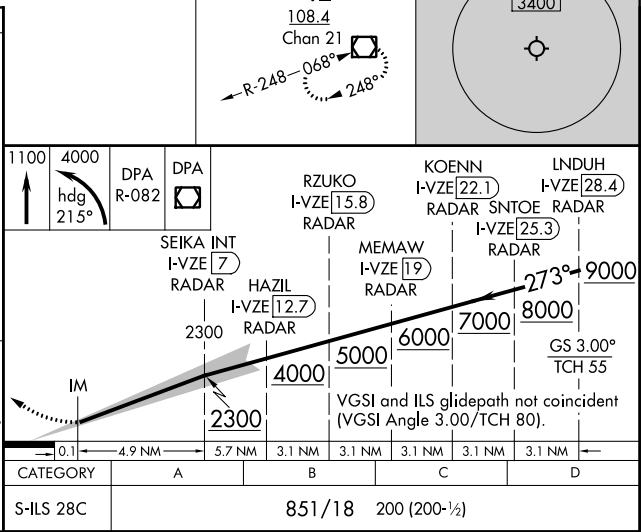
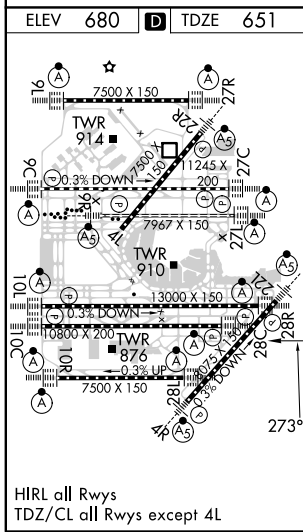


D-ATIS 135.4	CHICAGO APP CON 119.0	O'HARE TOWERS 128.15 348.0 (Rwy 9L/27R) 133.0 348.0 (10R/28L)	GND CON (TWR CENTER) (TWR NORTH) 121.75 (OBND)
282.225	292.125	120.75 121.15 126.9 132.7 348.0 (CENTER)	121.9 (IBND)
PRM 119.625			226.675 (ALL TWRS)

CLNC DEL 121.6	CPDLC
--------------------------	-------



ELEV 680	D	TDZE 651
-----------------	----------	-----------------



CHICAGO, ILLINOIS
Amdt 1A 03JAN19

41°59'N-87°54'W

CHICAGO O'HARE INTL (ORD)

ILS PRM RWY 28C (CLOSE PARALLEL)

EC-3, 09 SEP 2021 to 07 OCT 2021