

LOC/DME I-BYW 110.9 Chan 46	APP CRS 091°	Rwy Idg 7500 TDZE 680 Apt Elev 680
-------------------------------------------------	------------------------	---------------------------------------------------------------

ILS PRM Y RWY 10R (CLOSE PARALLEL)

CHICAGO O'HARE INTL (ORD)

RNAV 1-GPS or RADAR required for procedure entry. DME or RADAR required.
From GIBNS: RNAV-1 GPS required.



MISSED APPROACH: Climb to 1200 then climbing right turn to 4000 direct DPA VOR/DME and hold.

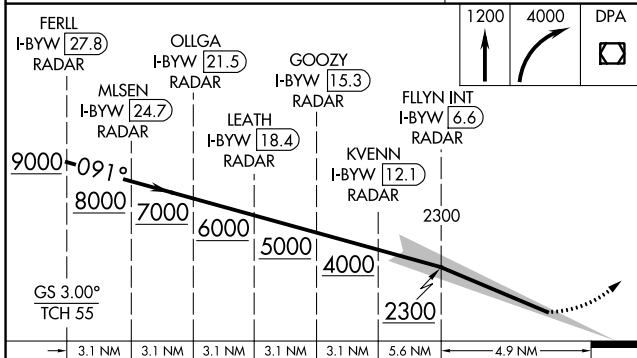
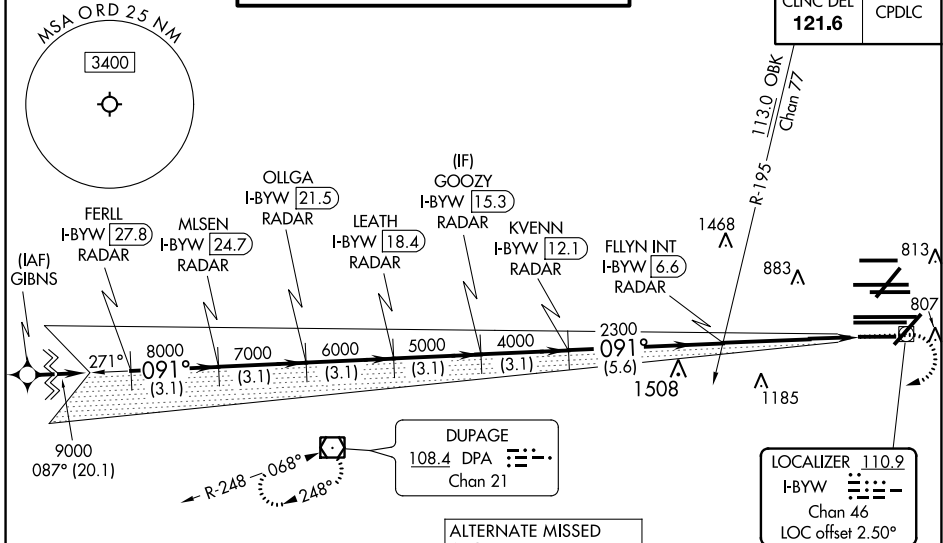
Simultaneous approach authorized. Use of FD or AP required during simultaneous operations. Dual VHF Comm required. See additional requirements on AAUP.

D-ATIS 135.4 282.225	CHICAGO APP CON 119.0 292.125
------------------------------------------	-----------------------------------------

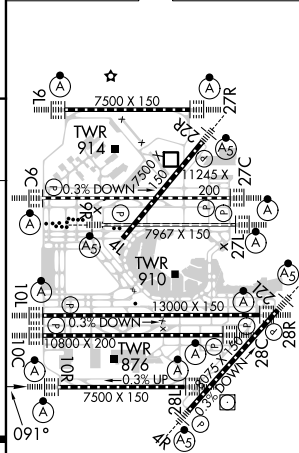
O'HARE TOWERS			
128.15	348.0 (Rwy 9L/27R)	133.0	348.0 (10R/28L)
120.75	121.15	126.9	132.7
348.0 (CENTER)			
PRM 128.05			

GND CON (TWR CENTER)	124.125	121.75 (OBND)
(TWR NORTH)	118.05	121.9 (IBND)
(TWR SOUTH)	226.675 (ALL TWRs)	

CLNC DEL	121.6	CPDLC
----------	--------------	-------



ELEV 680	D	TDZE 680
----------	---	----------



CATEGORY	A	B	C	D
S-ILS 10R		930/24	250 (300-1/2)	

HIRL all Rwys
TDZ/CL all Rwys except 4L

EC-3, 09 SEP 2021 to 07 OCT 2021

EC-3, 09 SEP 2021 to 07 OCT 2021