

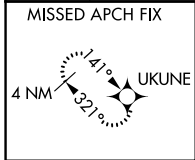
WAAS CH <b>70643</b> <b>W27D</b>	APP CRS <b>273°</b>	Rwy Idg <b>11245</b> TDZE <b>653</b> Apt Elev <b>680</b>
--	------------------------	--

# RNAV (GPS) RWY 27C

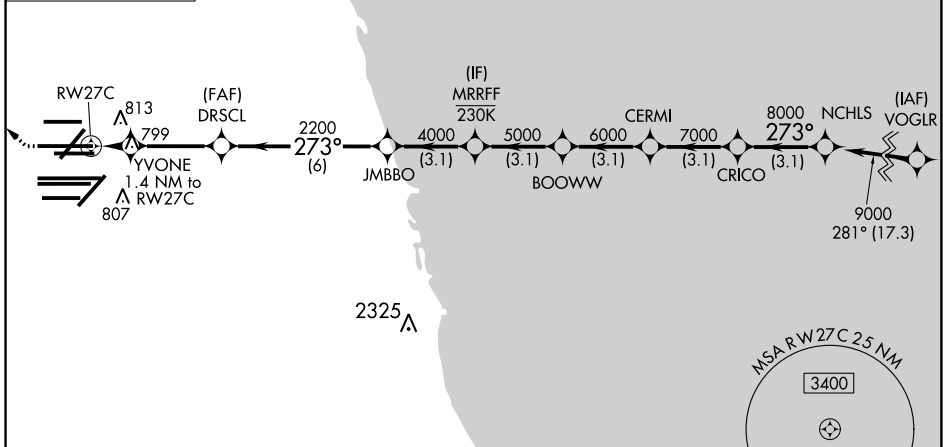
CHICAGO O'HARE INTL (ORD)

RNP APCH. Simultaneous approach authorized. LNAV procedure NA during simultaneous operations. Use of FD or AP required during simultaneous operations. For uncompensated Baro-VNAV systems, LNAV/VNAV NA below -19°C or above 54°C. For inop ALS, increase LNAV Cat C/D visibility to RVR 6000.	ALS F-2 	MISSED APPROACH: Climb to 1100 then climbing right turn to 4000 direct UKUNE and hold.
--	-------------	---

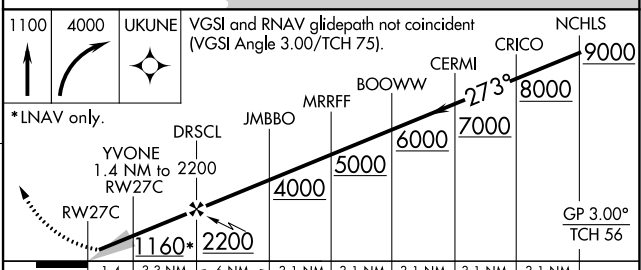
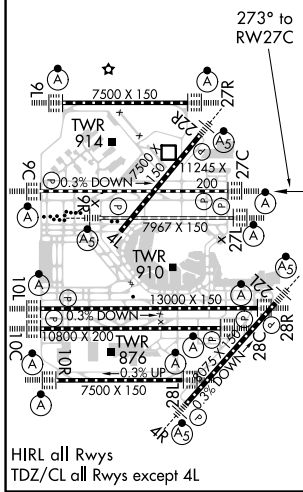
D-ATIS <b>135.4</b>	CHICAGO APP CON <b>119.0 292.125</b>	O'HARE TOWERS <b>128.15 348.0</b> (Rwy 9L/27R) <b>133.0 348.0</b> (10R/28L) <b>120.75 121.15 126.9 132.7 348.0</b> (CENTER)	GND CON (TWR CENTER) <b>121.75</b> (OBND) (TWR NORTH) <b>118.05</b> (TWR SOUTH) <b>121.9</b> (IBND) <b>226.675</b> (ALL TWRs)
------------------------	---	--	---



CLNC DEL <b>121.6</b>	CPDLC
--------------------------	-------



ELEV <b>680</b>	<b>D</b>	TDZE <b>653</b>
-----------------	----------	-----------------



CATEGORY	A	B	C	D
LPV DA		853/18	200 (200-1/2)	
LNAV/VNAV DA		1086/40	433 (500-3/4)	
LNAV MDA	1060/24	407 (400-1/2)	1060/40	407 (400-3/4)

EC-3, 09 SEP 2021 to 07 OCT 2021

EC-3, 09 SEP 2021 to 07 OCT 2021