

(CLOSE PARALLEL)

CHICAGO O'HARE INTL (ORD)

WAAS CH 53639 W28B	APP CRS 273°	Rwy Idg 10800 TDZE 651 Apt Elev 680
--	------------------------	--

▼ For uncompensated Baro-VNAV systems, LNAV/VNAV NA below -19°C (-2°F) or above 54°C (130°F). DME/DME RNP-0.3 NA. Use of FD or AP providing RNAV track guidance required during simultaneous operations. Simultaneous approach authorized. Dual VHF comm required. See additional requirements on AAUP.



MISSED APPROACH:
Climb to 1100 then climbing left turn to 4000 direct DPA VOR/DME and hold.

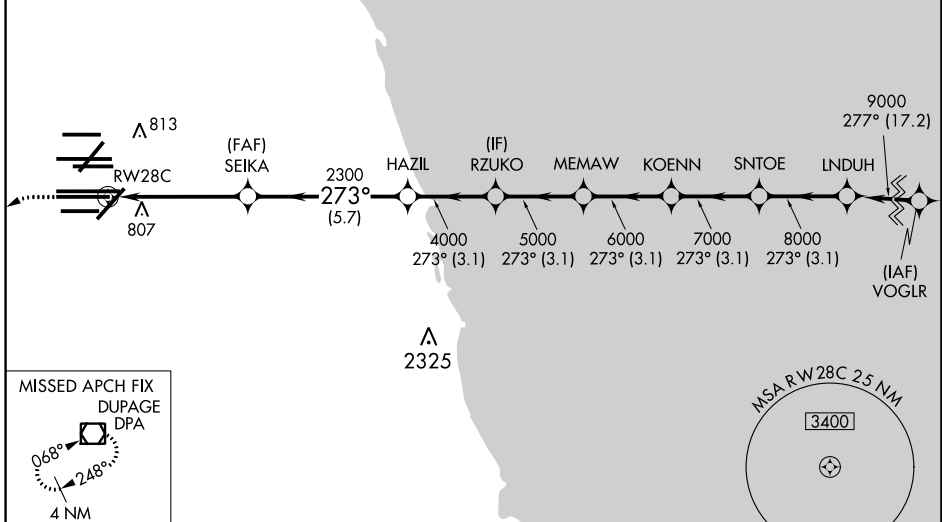
D-ATIS 135.4 282.225	CHICAGO APP CON 119.0 292.125
--	---

O'HARE TOWERS			
128.15	348.0 (Rwy 9L/27R)	133.0	348.0 (10R/28L)
120.75	121.15	126.9	132.7 348.0 (CENTER)
PRM 119,625			

GND CON (TWR NORTH)	(TWR CENTER) 121.75 (OBND)
124.125	121.9 (IBND)
118.05 (TWR SOUTH)	
226.675 (ALL TWRS)	

CLNC DEL 121.6	CPDLC
--------------------------	-------

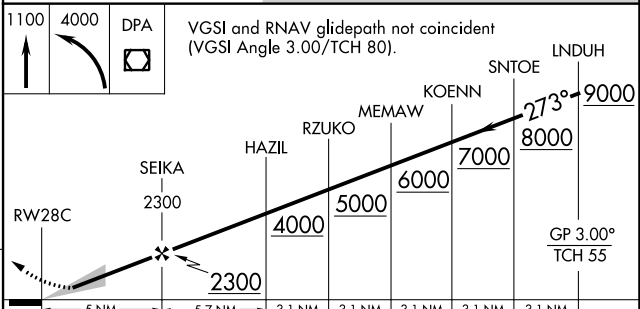
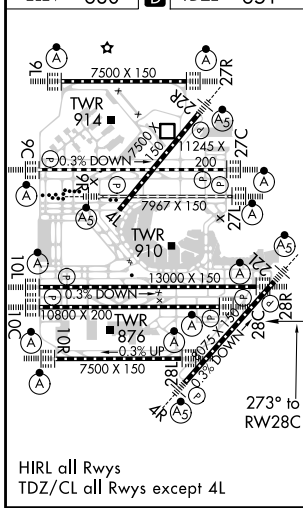
RADAR REQUIRED



EC-3, 09 SEP 2021 to 07 OCT 2021

EC-3, 09 SEP 2021 to 07 OCT 2021

ELEV 680	D	TDZE 651
-----------------	----------	-----------------



CATEGORY	A	B	C	D
LPV DA		851/18	200 (200-½)	
LNAV/VNAV DA		1094/50	443 (500-1)	