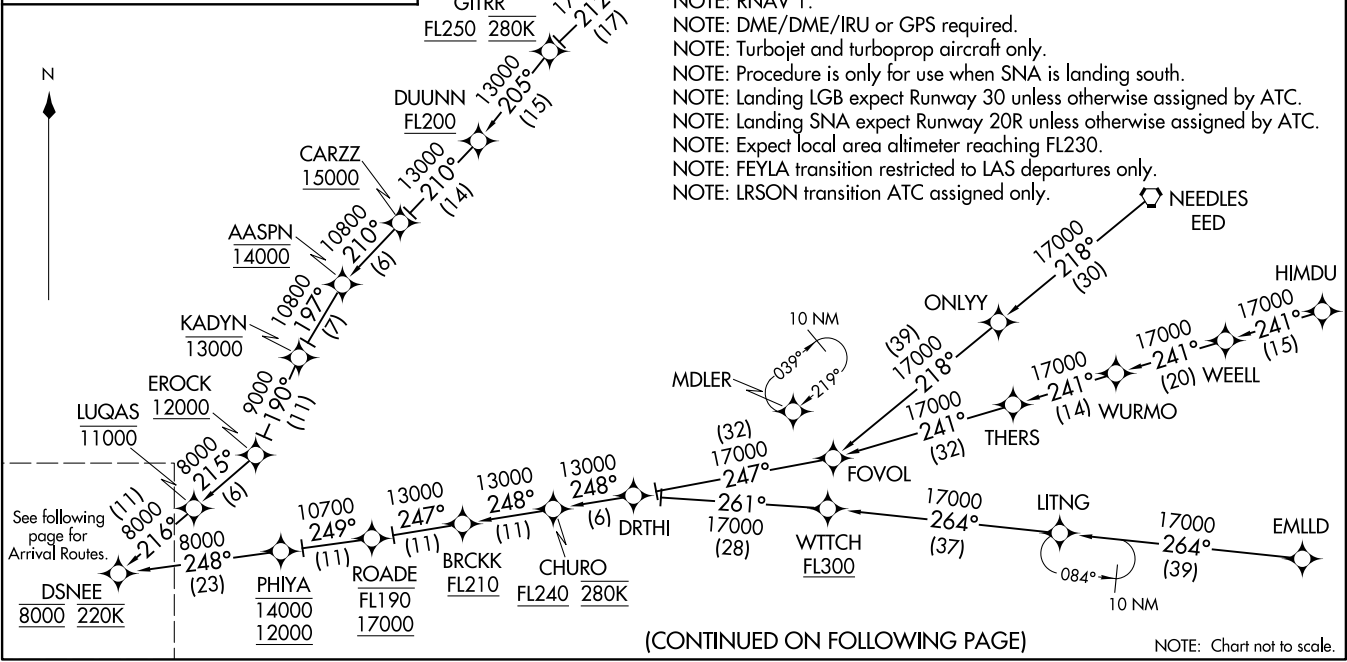


DSNEE FOUR ARRIVAL (RNAV) Transition Routes
(DSNEE.DSNEE4) 19JUL18

- EMLLD TRANSITION (EMLLD.DSNEE4)
- FEYLA TRANSITION (FEYLA.DSNEE4)
- HIMDU TRANSITION (HIMDU.DSNEE4)
- LRSON TRANSITION (LRSON.DSNEE4)
- MARUE TRANSITION (MARUE.DSNEE4)
- NATEE TRANSITION (NATEE.DSNEE4)
- NEEDLES TRANSITION (EED.DSNEE4)

SOCAL APP CON
134.0 278.3
LGB ATIS
127.75
SNA D-ATIS
126.0



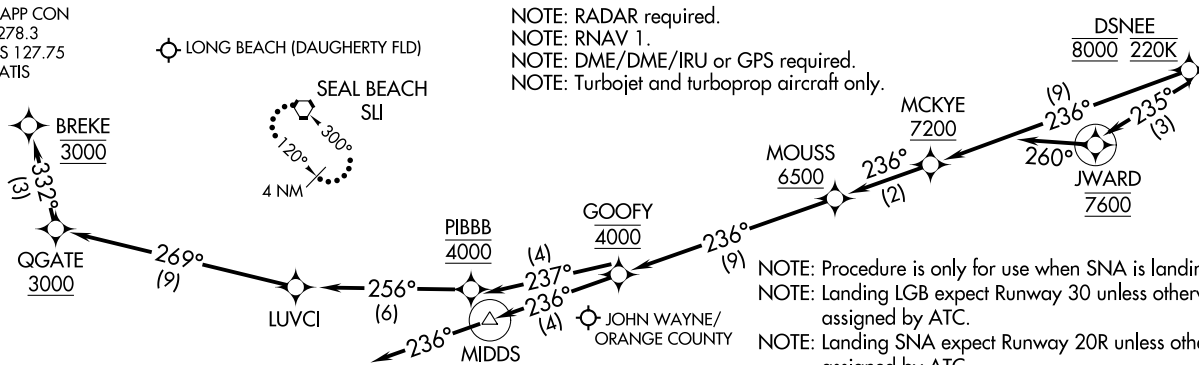
(CONTINUED ON FOLLOWING PAGE)

NOTE: Chart not to scale.

(DSNEE.DSNEE4) 20198
AL-236 (FAA)
LONG BEACH, CALIFORNIA

DSN~~EE~~ FOUR ARRIVAL (RNAV) (DSN~~EE~~.DSN~~EE~~4) 19JUL18

SOCAL APP CON
134.0 278.3
LGB ATIS 127.75
SNA D-ATIS
126.0



NOTE: RADAR required.
NOTE: RNAV 1.
NOTE: DME/DME/IRU or GPS required.
NOTE: Turbojet and turboprop aircraft only.

NOTE: Procedure is only for use when SNA is landing south.
NOTE: Landing LGB expect Runway 30 unless otherwise assigned by ATC.
NOTE: Landing SNA expect Runway 20R unless otherwise assigned by ATC.
NOTE: Expect local area altimeter reaching FL230.

NOTE: Chart not to scale.

ARRIVAL ROUTE DESCRIPTION

LANDING KLGB RUNWAY 12: From DSNEE on track 236° to cross MCKYE at or above 7200, then on track 236° to cross MOUSS at or above 6500, then on track 236° to cross GOOFY at 4000, then on track 237° to cross PIBBB at 4000, then on track 256° to LUVCI, then on track 269° to cross QGATE at or above 3000, then on track 332° to cross BREKE at 3000. Expect RNAV (RNP) RWY 12 approach.

LANDING KLGB RUNWAYS 26R, 30: From DSNEE on track 236° to cross MCKYE at or above 7200, then on track 236° to cross MOUSS at or above 6500, then on track 236° to cross GOOFY at 4000, then on track 236° to cross MIBB at 4000, then on track 236° Expect ILS or RNAV (RNP) RWY 30 approach, or RNAV (RNP) RWY 26R approach.

LANDING KSNA: From DSNEE on track 235° to cross JWARD at 7600, then on heading 260° or as assigned by ATC. Expect RADAR vectors to ILS or RNAV (RNP) RWY 20R final approach course.

LOST COMMUNICATIONS: In the event of lost communications:

LANDING LGB RUNWAYS 26R, 30: After MIBB proceed on the RNAV (RNP) RWY 30 or ILS RWY 30 approach.

LANDING LGB RUNWAY 12: After BREKE proceed on the RNAV (RNP) RWY 12 approach, if unable approach, after MIBB/BREKE climb to 4000 direct SLI VORTAC and hold.

LANDING SNA RUNWAY 20R: After DSNEE proceed on the RNAV (RNP) RWY 20R approach. If unable approach, after DSNEE maintain 6000 direct SLI VORTAC and hold.

Arrival Routes

LONG BEACH, CALIFORNIA

(DSN~~EE~~.DSN~~EE~~4) 21168
DSN~~EE~~ FOUR ARRIVAL (RNAV)

Arrival Routes
A1-236 (FAA)

LONG BEACH, CALIFORNIA