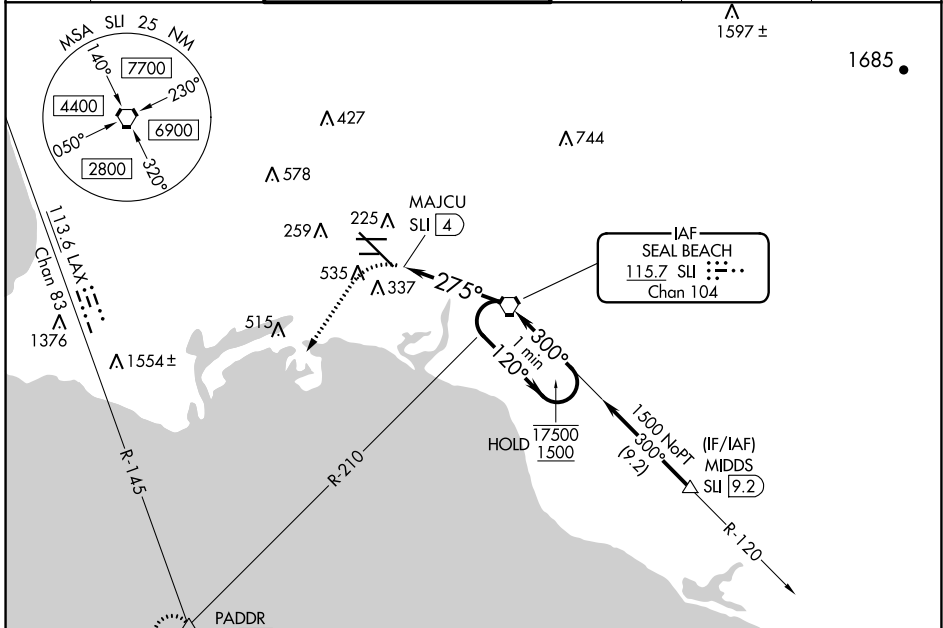


VORTAC SUI 115.7 Chan 104	APP CRS 275°	Rwy Idg TDZE 38 Apt Elev 60	7414
---	------------------------	---	-------------

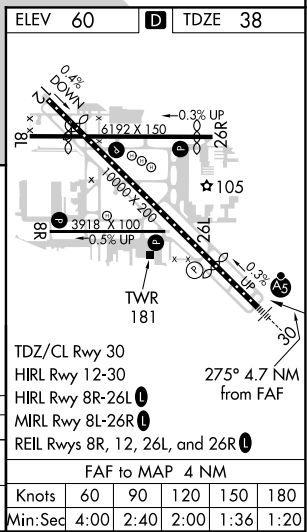
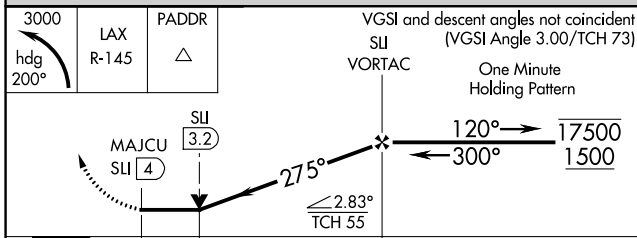
VOR or TACAN RWY 30

LONG BEACH (DAUGHERTY FLD) (LGB)

Rwy 30 helicopter visibility reduction below RVR 4000 NA. Inop table does not apply.		MISSED APPROACH: Climbing left turn to 3000 on heading 200° and LAX VORTAC R-145 to PADDR INT/LAX 21.8 DME and hold.			
		ATIS 127.75	SOCAL APP CON 125.35 316.125	LONG BEACH TOWER* 120.5 257.6 (Rwy 12) 119.4 (CTAF) 257.6 (Rwy 30)	GND CON 133.0 257.6



ELEV 60	D TDZE 38
----------------	-------------------------



CATEGORY S-30	A 600/55	B 562 (600-1)	C 600-1 5/8	D 562 (600-1 5/8)	TDZ/CL Rwy 30 12-30	REIL Rws 8R, 12, 26L, and 26R 1
					HIRL Rwy 12-30 1	
MIRL Rwy 8L-26R 1	FAF to MAP 4 NM					
CIRCLING	840-1	780 (800-1)	840-2 1/4 780 (800-2 1/4)	840-2 1/2 780 (800-2 1/2)	Knots 60 90 120 150 180	Min:Sec 4:00 2:40 2:00 1:36 1:20

SW-3, 09 SEP 2021 to 07 OCT 2021

SW-3, 09 SEP 2021 to 07 OCT 2021