

LOC/DME I-MRY	APP CRS	Rwy ldg	<b>7000</b>
<b>110.7</b>	<b>098°</b>	TDZE	<b>198</b>
Chan <b>44</b>		Apt Elev	<b>257</b>

# ILS or LOC RWY 10R

MONTEREY RGNL (MRY)

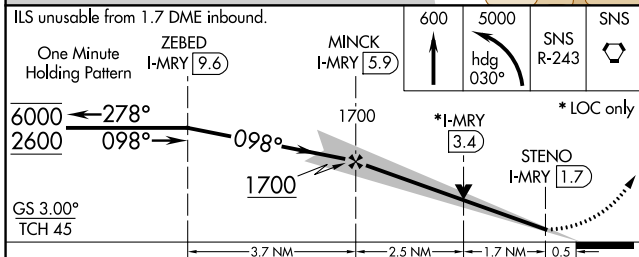
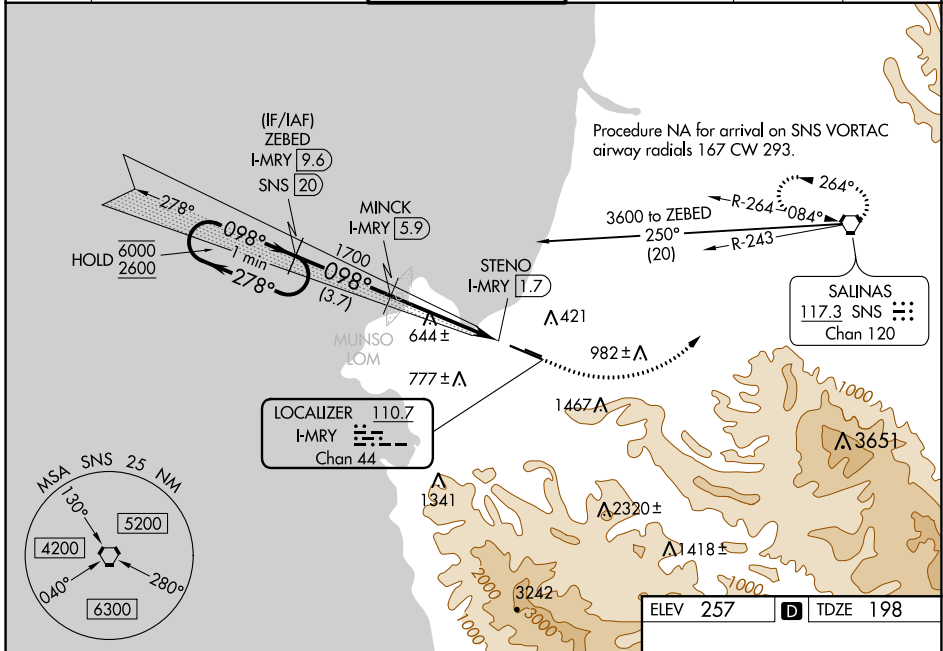
DME required.

**⚠** Circling NA south of Rwy 10R-28L.  
For inop ALS, increase S-ILS 10R all Cats visibility to RVR 6000, and increase S-LOC 10R Cat C and D visibility to 2 SM.

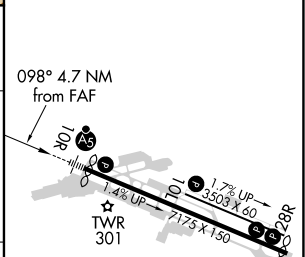
MALSRL 45

MISSED APPROACH: Climb to 600 then climbing left turn to 5000 on heading 030° and on SNS VORTAC R-243 to SNS VORTAC and hold, continue climb-in-hold to 5000. # Missed approach requires minimum climb of 265 feet per NM to 1360.

ATIS <b>119.25</b>	NORCAL APP CON <b>133.0 251.15</b> (340°-144°) <b>127.15 307.125</b> (145°-339°)	MONTEREY TOWER * <b>118.4</b> (CTAF) <b>257.8</b>	GND CON <b>120.875 348.6</b>	CLNC DEL <b>135.45</b>	UNICOM <b>122.95</b>
-----------------------	--	--	---------------------------------	---------------------------	-------------------------



ELEV 257	TDZE 198
----------	----------



CATEGORY	A	B	C	D
S-ILS 10R#	398/24		200 (200-½)	
S-ILS 10R	583/35		385 (400-⅝)	
S-LOC 10R	920/24	722 (700-½)	920-1⅝	722 (700-1⅝)
CIRCLING	920-1	663 (700-1)	1280-3	NA
			1023 (1100-3)	

MIRL Rwy 10L-28R  
HIRL Rwy 10R-28L  
REIL Rwy 28L  
REIL Rwy 10L and 28R

SW-2, 09 SEP 2021 to 07 OCT 2021

SW-2, 09 SEP 2021 to 07 OCT 2021