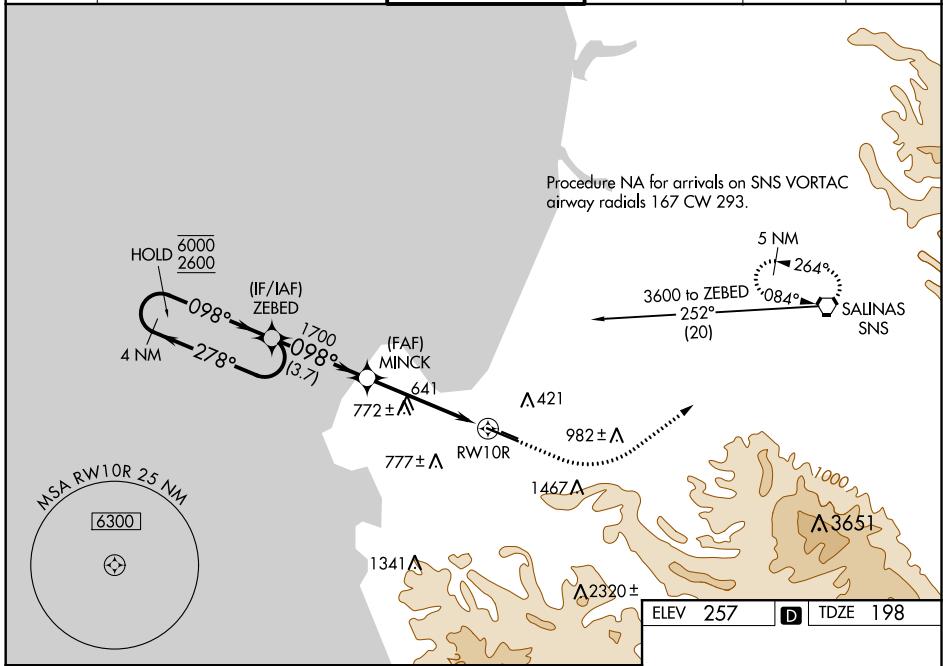


WAAS CH <b>69602</b> <b>W10A</b>	APP CRS <b>098°</b>	Rwy Idg TDZE Apt Elev	<b>7000</b> <b>198</b> <b>257</b>
--	------------------------	-----------------------------	---

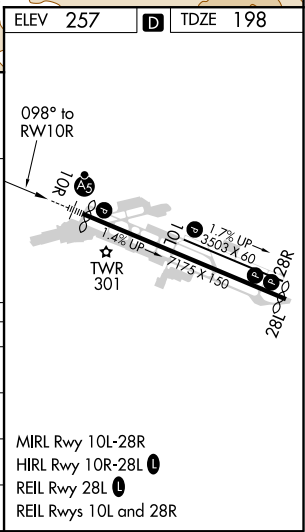
# RNAV (GPS) RWY 10R

MONTEREY RGNL (MRY)

RNP APCH.		MALSR	MISSED APPROACH: Climb to 1000 then climbing left turn to 5000 direct SNS VORTAC and hold, continue climb-in-hold to 5000.		
⚠ Circling NA south of Rwy 10R and 28L. For uncompensated Baro-VNAV systems, LNAV/VNAV NA below 0°C or above 54°C. For inop ALS, increase LPV visibility all Cats to 1/8 SM, LNAV/VNAV visibility all Cats and LNAV Cat C/D to 2 1/2 SM.			GND CON	CLNC DEL	UNICOM
ATIS <b>119.25</b>	NORCAL APP CON <b>133.0 251.15</b> (340°-144°) <b>127.15 307.125</b> (145°-339°)	MONTEREY TOWER ★ <b>118.4 (CTAF) 257.8</b>	<b>120.875 348.6</b>	<b>135.45</b>	<b>122.95</b>



4 NM Holding Pattern ZEBED 6000 ← 278° 2600 → 098° GP 3.00° TCH 45		MINCK 1700 *2.4 NM to RWY 10R *LNAV only		1000 5000 SNS	
3.7 NM		2.3 NM		2.4 NM	
CATEGORY	A	B	C	D	
LPV DA	718-1 1/2		520 (500-1 1/2)		
LNAV/VNAV DA	789-1 3/4		591 (600-1 3/4)		
LNAV MDA	980/24 782 (800-1/2)	980/40 782 (800-3/4)	980-1 3/4	782 (800-1 3/4)	
CIRCLING	980-1 723 (800-1)	980-1 1/4 723 (800-1 1/4)	1280-3 1023 (1100-3)	NA	



SW-2, 09 SEP 2021 to 07 OCT 2021

SW-2, 09 SEP 2021 to 07 OCT 2021

MIRL Rwy 10L-28R  
HIRL Rwy 10R-28L  
REIL Rwy 28L  
REIL Rwy 10L and 28R