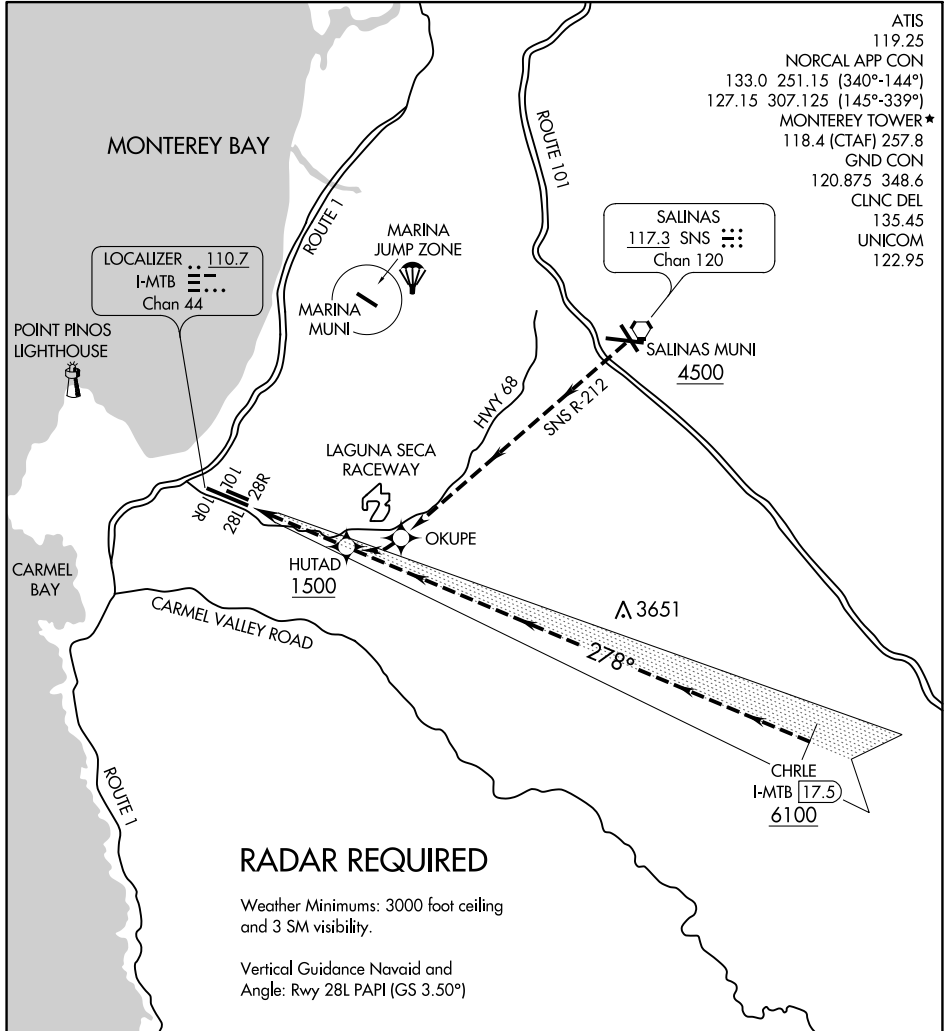


# RACEWAY VISUAL RWY 28L

AL-271 (FAA)

MONTEREY RGNL (MRY)  
MONTEREY, CALIFORNIA



- ATIS 119.25
- NORCAL APP CON 133.0 251.15 (340°-144°)
- 127.15 307.125 (145°-339°)
- MONTEREY TOWER\* 118.4 (CTAF) 257.8
- GND CON 120.875 348.6
- CLNC DEL 135.45
- UNICOM 122.95

SW-2, 09 SEP 2021 to 07 OCT 2021

SW-2, 09 SEP 2021 to 07 OCT 2021

## RADAR REQUIRED

Weather Minimums: 3000 foot ceiling and 3 SM visibility.

Vertical Guidance Navaid and Angle: Rwy 28L PAPI (GS 3.50°)

1	2	3	4	5	6	7	8	9	10	11	12	13	14	15	16	17	18	19	20	21	22	23	24	25	26
---	---	---	---	---	---	---	---	---	----	----	----	----	----	----	----	----	----	----	----	----	----	----	----	----	----

### RACEWAY VISUAL APPROACH RWY 28L

PROCEDURE NOT AUTHORIZED AT NIGHT.

From the east, proceed to Salinas Municipal Airport, then proceed southwest, remaining east of State Highway 68 until abeam Laguna Seca Raceway.

From the southeast, proceed from CHRLE on 278° course to HUTAD (1 mile south of Laguna Seca Raceway).

# RACEWAY VISUAL RWY 28L

Amdt 1 31DEC20

36°35'N-121°51'W

MONTEREY, CALIFORNIA  
MONTEREY RGNL (MRY)