

NORFOLK, VIRGINIA

ILS or LOC/DME RWY 10

LOC I-NGU 108.95	APCH CRS 101°	Rwy ldg 8071 TDZE 14 Arprt Elev 15
----------------------------	-------------------------	---------------------------------------------------

AL-290 [USN]

NORFOLK NS (CHAMBERS FIELD) (KNGU)

TACAN required. ▼ * When ALS inop, increase vis to ¾ mile. ** When ALS inop, increase CAT AB vis to 1 mile, CAT CDE vis to 1½ miles. *** Circling not authorized S of Rwy 10-28.		ALSF-2 	MISSED APPROACH: Climbing left turn to 2100 via NGU TACAN R-053 to RUVNE and hold.
-------------------------------------------------------------------------------------------------------------------------------------------------------------------------------------------	--	------------	------------------------------------------------------------------------------------

ATIS 118.425 342.0	NORFOLK APP CON 118.9 353.7	CHAMBERS TOWER 124.3 379.15	GND CON 121.8 370.85	CLNC DEL 120.7 339.8	ASR/PAR
------------------------------	---------------------------------------	---------------------------------------	--------------------------------	--------------------------------	---------

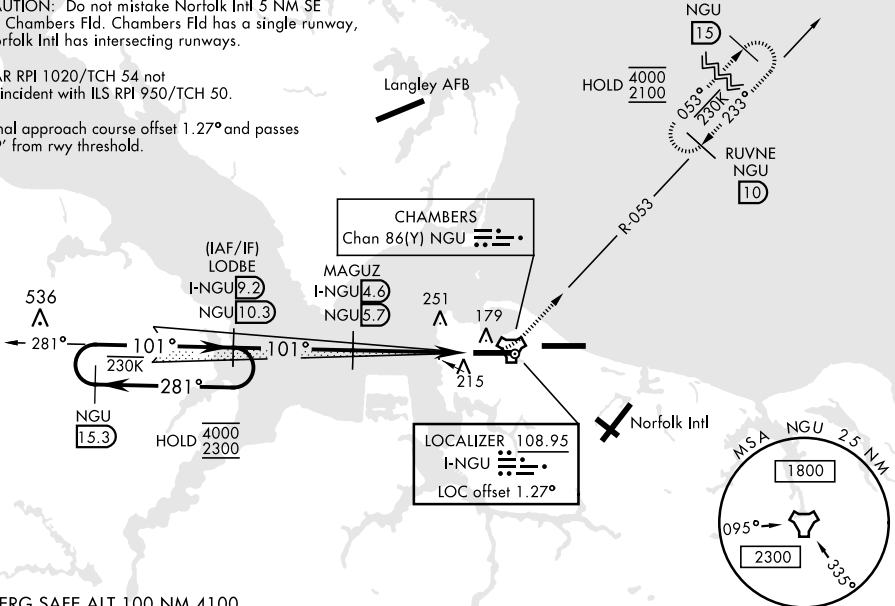
EFFECTIVE BY NOTAM

NORFOLK NS HELIPORT 1 NM NW
Use caution in circling approach

CAUTION: Do not mistake Norfolk Intl 5 NM SE for Chambers Fld. Chambers Fld has a single runway, Norfolk Intl has intersecting runways.

PAR RPI 1020/TCH 54 not coincident with ILS RPI 950/TCH 50.

Final approach course offset 1.27° and passes 59' from rwy threshold.



EMERG SAFE ALT 100 NM 4100

5 NM Holding pattern LODBE I-NGU 9.2 NGU 10.3 MAGUZ I-NGU 4.6 NGU 5.7 I-NGU 1.4 NGU 2.3 TACAN I-NGU 0.5 NGU 1.6	VGSi and ILS glidepath not coincident (VGSi Angle 3.00/TCH 35).		2100 NGU R-053		ELEV 15	TDZE 14
	Rwy 10 ldg 8071' Rwy 28 ldg 7375'		NORFOLK NS Heliport 101° 4.5 NM from FAF 8370 x 200 TWR A4			
GS 3.00° TCH 50	4.1 NM		.4 NM			
CATEGORY	A	B	C	D	E	
S-ILS 10 *	264-½		250	(300-½)		
S-LOC 10 **	480-½	466 (500-½)	480-1	466	(500-1)	
CIRCLING ***	480-1 465 (500-1)	560-1 545 (600-1)	560-1 ½ 545 (600-1 ½)	580-2 565 (600-2)	700-2 ½ 685 (700-2 ½)	
					HIRL Rwy 10-28 REIL Rwy 10-28 TDZL/CL Rwy 10-28	

NORFOLK, VIRGINIA

36° 56' N-76° 17' W

NORFOLK NS (CHAMBERS FIELD) (KNGU)

Orig 17JUN21

ILS or LOC/DME RWY 10

NE-3, 09 SEP 2021 to 07 OCT 2021

NE-3, 09 SEP 2021 to 07 OCT 2021