

TACAN RWY 28

TACAN NGU Chan 86Y	APCH CRS 290°	Rwy Idg 7375 TDZE 14 Arpt Elev 15
------------------------------	-------------------------	--

AL-290 [USN]

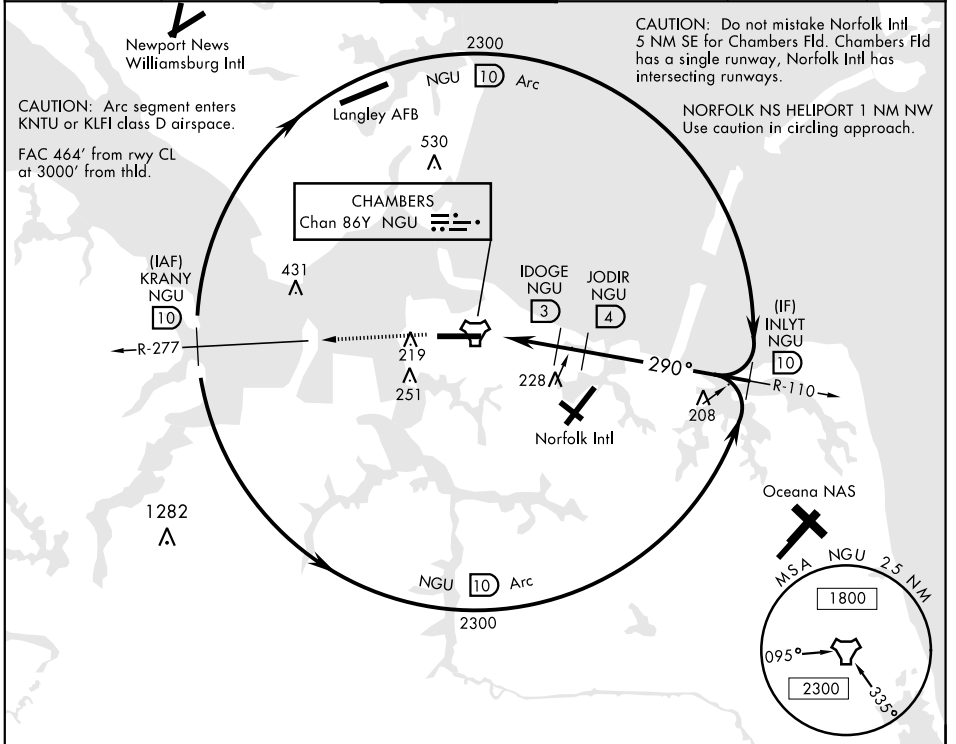
NORFOLK NS (CHAMBERS FIELD) (KNGU)

▼ * When ALS inop, increase CAT AB vis to 1 mile, CAT CD vis to 1 3/8 miles.
 ** Circling not authorized S of Rwy 10-28.
 Helicopter vis reduction below 3/4 mile not authorized.



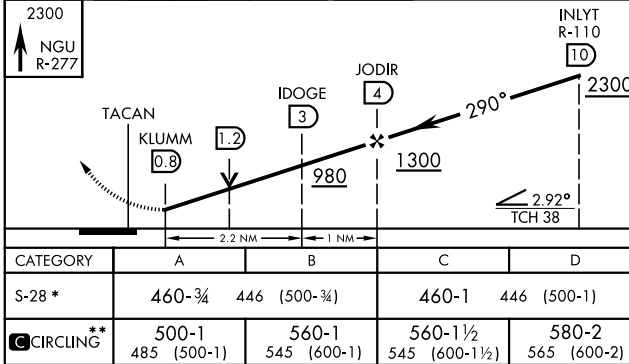
MISSED APPROACH: Climb to 2300 on NGU TACAN R-277 then as directed by ATC.

ATIS 118.425 342.0	NORFOLK APP CON 118.9 353.7	CHAMBERS TOWER 124.3 379.15	GND CON 121.8 370.85	CLNC DEL 120.7 339.8	ASR/PAR
------------------------------	---------------------------------------	---------------------------------------	--------------------------------	--------------------------------	---------

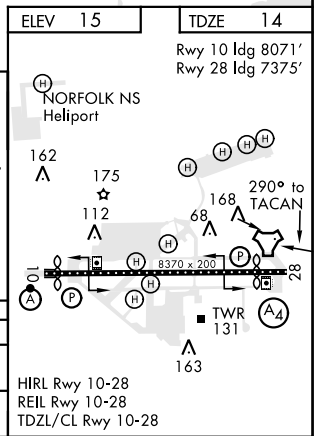


RADAR REQUIRED

EMERG SAFE ALT 100 NM 4100



CATEGORY	A	B	C	D
S-28 *	460-3/4	446 (500-3/4)	460-1	446 (500-1)
CIRCLING **	500-1 485 (500-1)	560-1 545 (600-1)	560-1 1/2 545 (600-1 1/2)	580-2 565 (600-2)



NORFOLK, VIRGINIA 36°56'N-76°17'W NORFOLK NS (CHAMBERS FIELD) (KNGU)

Amtd 6 26MAR20

TACAN RWY 28

NE-3, 09 SEP 2021 to 07 OCT 2021

NE-3, 09 SEP 2021 to 07 OCT 2021