

BANND TWO ARRIVAL (RNAV) Transition Routes  
(BANND.BANND2) 24MAY18

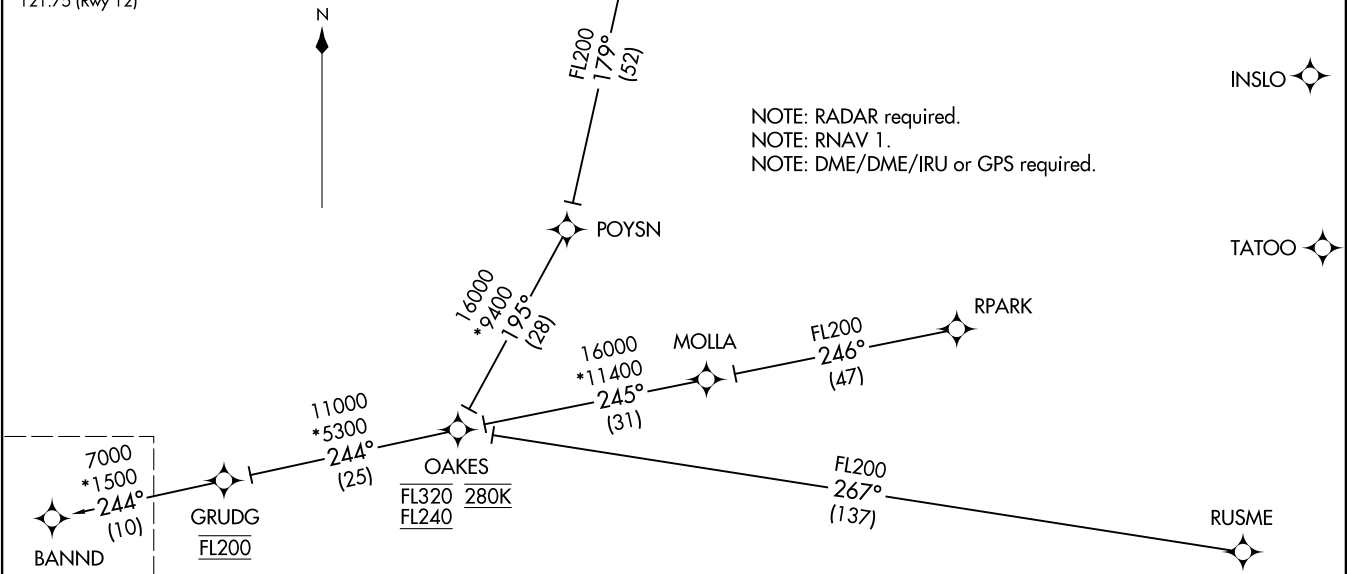
OAKLAND, CALIFORNIA  
METRO OAKLAND INTL (OAK)

OAKLAND CENTER  
134.37 281.5  
NORCAL APP CON  
124.8 263.15  
D-ATIS  
133.775  
OAKLAND TOWER  
127.2 256.9 (Rwy 12)  
GND CON  
121.75 (Rwy 12)

MRLET TRANSITION (MRLET.BANND2)  
RPARK TRANSITION (RPARK.BANND2)  
RUSME TRANSITION (RUSME.BANND2)

(BANND.BANND2) 21168  
AL-294 (FAA)  
BANND TWO ARRIVAL (RNAV) Transition Routes

METRO OAKLAND INTL (OAK)  
OAKLAND, CALIFORNIA



NOTE: RADAR required.  
NOTE: RNAV 1.  
NOTE: DME/DME/IRU or GPS required.

7000  
\*1500  
244°  
(10)  
BANND  
FL180 270K  
See following page  
for Arrival Routes.

(CONTINUED ON FOLLOWING PAGE)

NOTE: Chart not to scale.

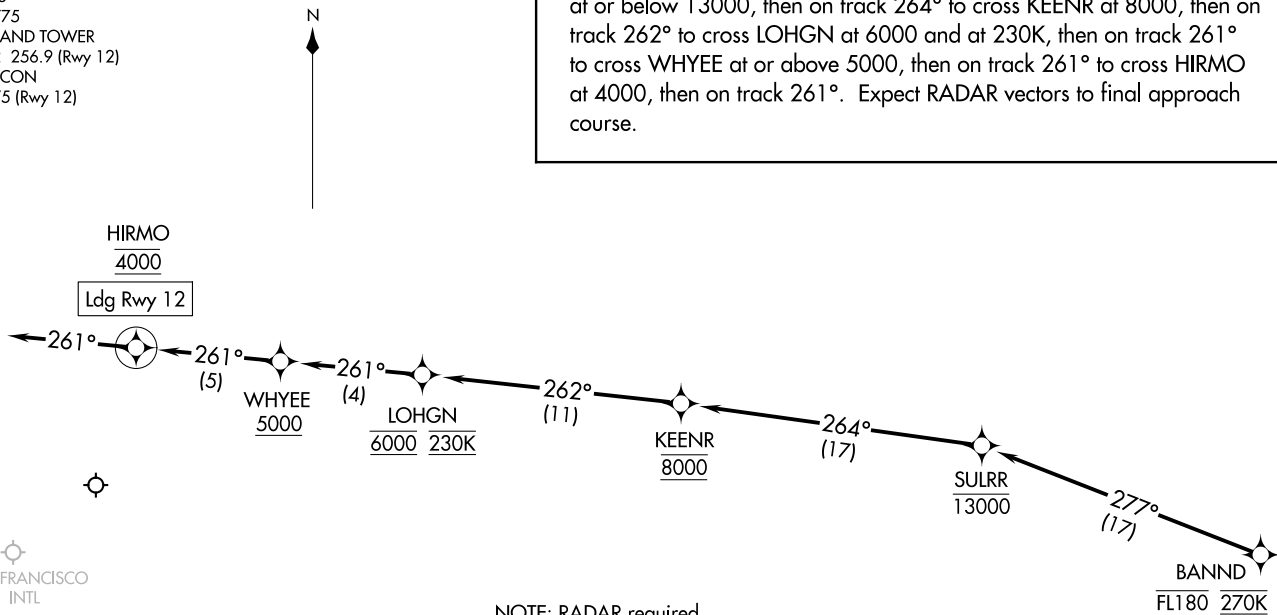
BANND TWO ARRIVAL (RNAV) Arrival Routes  
(BANND.BANND2) 24MAY18  
OAKLAND, CALIFORNIA  
METRO OAKLAND INTL (OAK)

(BANND.BANND2) 21168  
AL-294 (FAA)  
METRO OAKLAND INTL (OAK)  
OAKLAND, CALIFORNIA

OAKLAND CENTER  
134.37 281.5  
NORCAL APP CON  
124.8 263.15  
D-ATIS  
133.775  
OAKLAND TOWER  
127.2 256.9 (Rwy 12)  
GND CON  
121.75 (Rwy 12)

### ARRIVAL ROUTE DESCRIPTION

LANDING RUNWAY 12: From BANND on track 277° to cross SULRR at or below 13000, then on track 264° to cross KEENR at 8000, then on track 262° to cross LOHGN at 6000 and at 230K, then on track 261° to cross WHYEE at or above 5000, then on track 261° to cross HIRMO at 4000, then on track 261°. Expect RADAR vectors to final approach course.



NOTE: RADAR required.  
NOTE: RNAV 1.  
NOTE: DME/DME/IRU or GPS required.

NOTE: Chart not to scale.