

D-ATIS 133.775  
CLNC DEL  
121.1  
CPDLC  
GND CON  
121.9 (Rwys 10L/R, 28L/28R, 15/33)  
121.75 (Rwy 12/30)  
OAKLAND TOWER  
118.3 291.65 (Rwys 10L/R, 28L/28R, 15/33)  
127.2 256.9 (Rwy 12/30)  
NORCAL DEP CON  
135.1 307.2

**TOP ALTITUDE:  
10000**

**DEPARTURE ROUTE DESCRIPTION**

**TAKEOFF RUNWAYS 28L, 28R:** Climb on heading 278° to 520, then direct to cross LEJAY at or below 2000, then on track 296° to CNDEL, then left turn direct to cross PORTE at or below 10000. Thence. . . .

**TAKEOFF RUNWAY 30:** Climb on heading 296° to 520, then direct to cross LEJAY at or below 2000, then on track 296° to CNDEL, then left turn direct to cross PORTE at or below 10000. Thence. . . .

. . . . on (transition). Maintain 10000, expect filed altitude 10 minutes after departure.

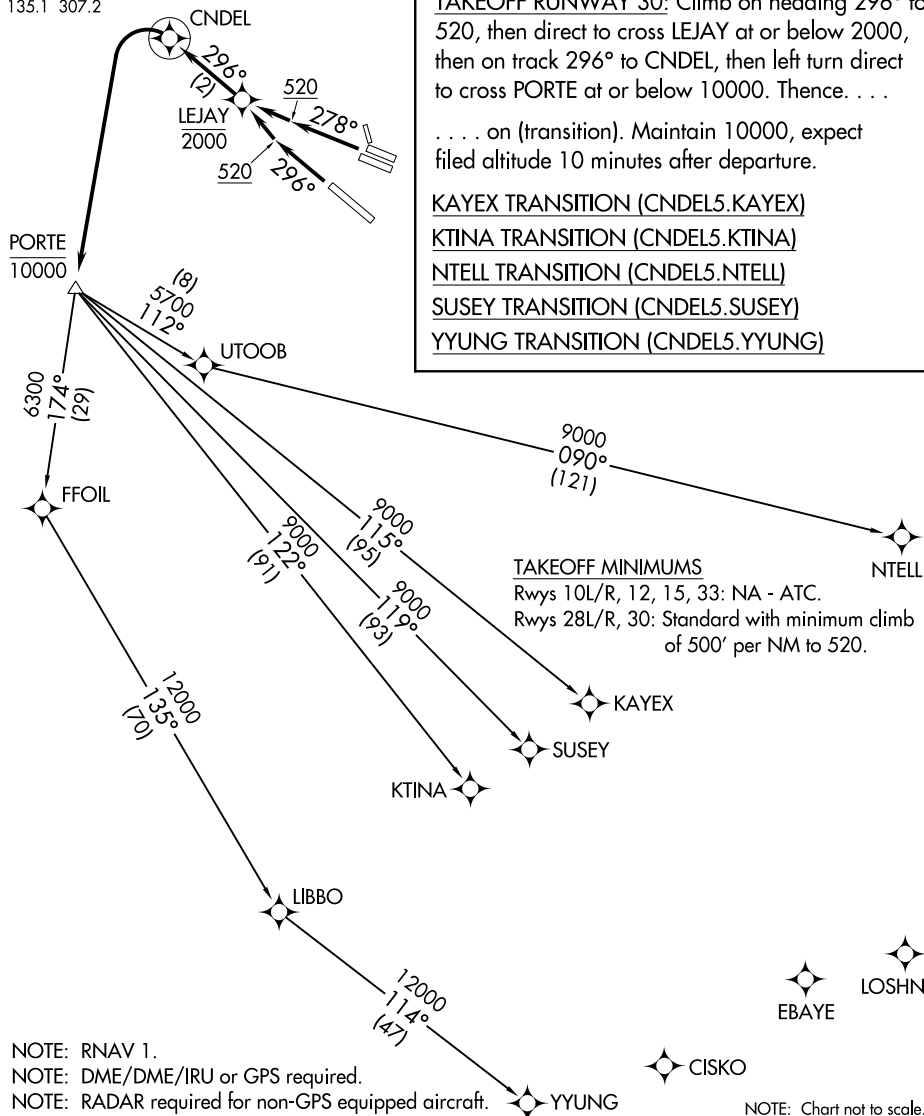
KAYEX TRANSITION (CNDEL5.KAYEX)

KTINA TRANSITION (CNDEL5.KTINA)

NTELL TRANSITION (CNDEL5.NTELL)

SUSEY TRANSITION (CNDEL5.SUSEY)

YYUNG TRANSITION (CNDEL5.YYUNG)



TAKEOFF MINIMUMS

Rwys 10L/R, 12, 15, 33: NA - ATC.

Rwys 28L/R, 30: Standard with minimum climb of 500' per NM to 520.

NOTE: RNAV 1.  
NOTE: DME/DME/IRU or GPS required.  
NOTE: RADAR required for non-GPS equipped aircraft.

NOTE: Chart not to scale.

SW-2, 09 SEP 2021 to 07 OCT 2021

SW-2, 09 SEP 2021 to 07 OCT 2021